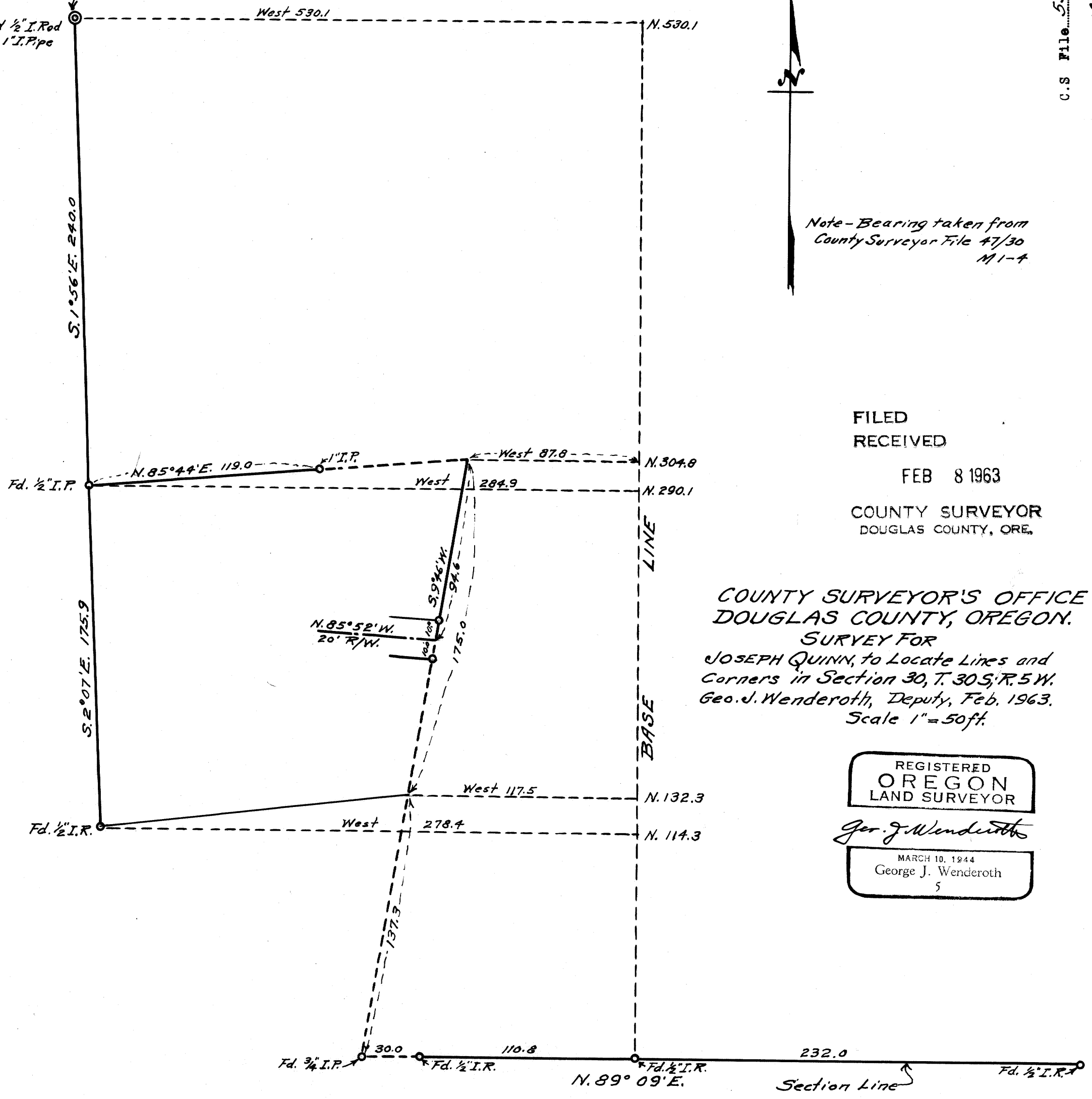


**COUNTY SURVEYORS FILE DATA  
DO NOT REMOVE FROM OFFICE**

C.S. File 53 / 5  
Map File M24 / 53

Beg. Point  
N. 80° 01' W. 2868.6 ft.  
from S.E. Cor. Sec. 30.

Found 1/2" I. Rod  
Replace with 1" I. Pipe



Note - Bearing taken from  
County Surveyor File 47/30  
M1-4

FILED  
RECEIVED

FEB 8 1963

COUNTY SURVEYOR  
DOUGLAS COUNTY, ORE.

COUNTY SURVEYOR'S OFFICE  
DOUGLAS COUNTY, OREGON.

SURVEY FOR  
JOSEPH QUINN, to Locate Lines and  
Corners in Section 30, T. 30 S., R. 5 W.  
Geo. J. Wenderoth, Deputy, Feb. 1963.  
Scale 1" = 50 ft.

REGISTERED  
OREGON  
LAND SURVEYOR

*Geo. J. Wenderoth*

MARCH 10, 1944  
George J. Wenderoth  
5

C.S. File 53 / 5  
Map File M24 / 53