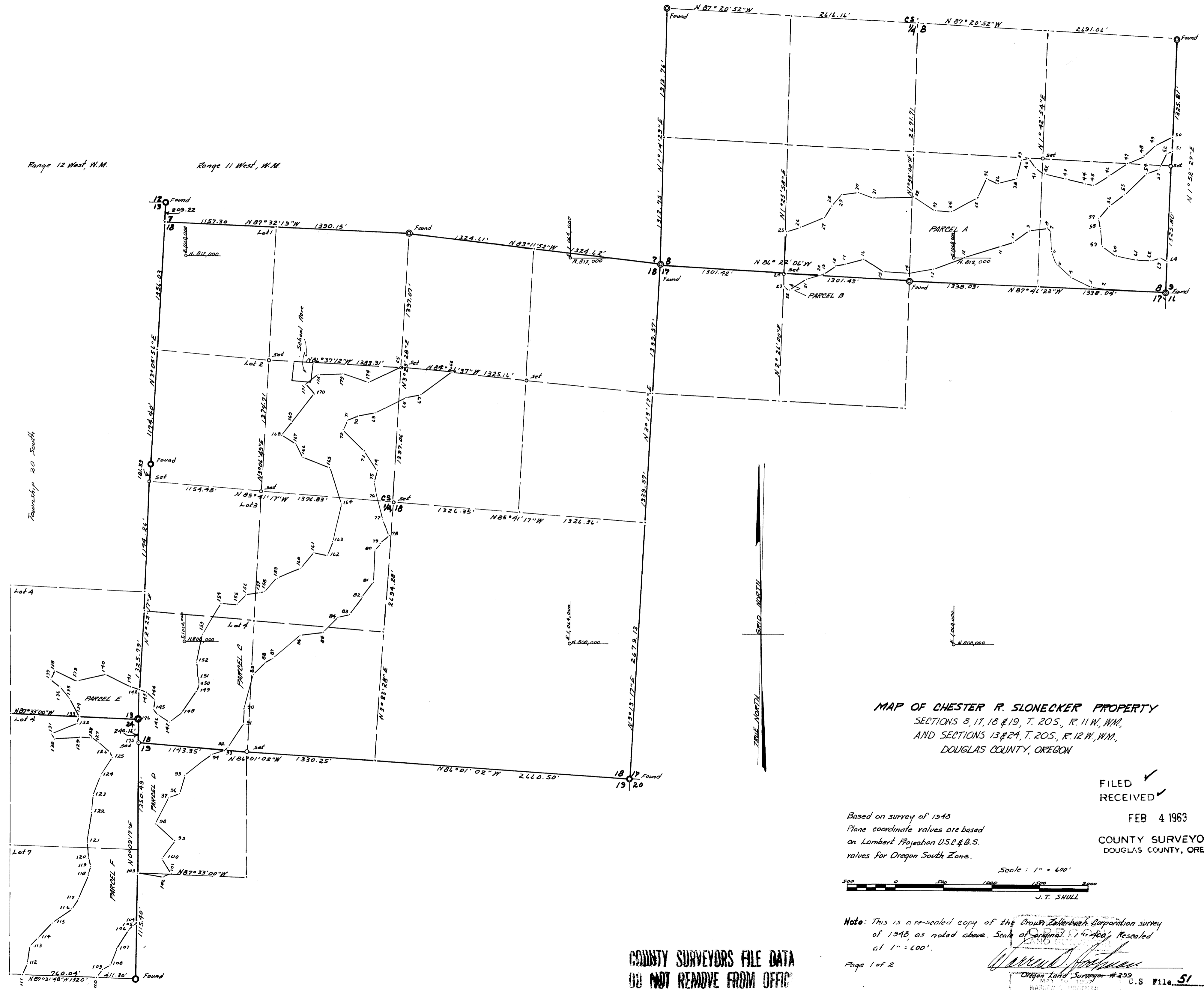


M 24-52

Range 12 West, W.M.

Range 11 West, W.M.

Township 20 South



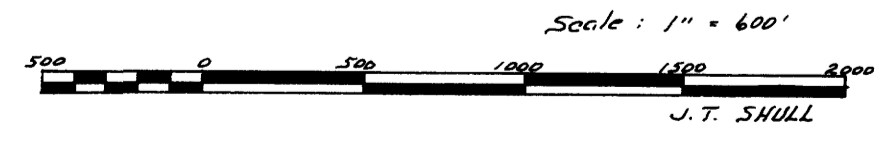
MAP OF CHESTER R. SLONECKER PROPERTY
 SECTIONS 8, 11, 18 & 19, T. 20S, R. 11 W, W.M.,
 AND SECTIONS 13 & 24, T. 20S, R. 12 W, W.M.,
 DOUGLAS COUNTY, OREGON

FILED
 RECEIVED

FEB 4 1963

COUNTY SURVEYOR
 DOUGLAS COUNTY, ORE.

Based on survey of 1948
 Plane coordinate values are based
 on Lambert Projection U.S.P. & B.S.
 values for Oregon South Zone.



Note: This is a re-scaled copy of the Crown Zellerbach Corporation survey
 of 1948, as noted above. Scale of original 1" = 400'. Rescaled
 at 1" = 600'.

Page 1 of 2

Warren D. Johnson
 Oregon Land Surveyor # 299

WARREN D. JOHNSON
 939
 C.S. File 51, 249
 Map File 24, 52

COUNTY SURVEYORS FILE DATA
 DO NOT REMOVE FROM OFFICE

M 24-52

SURVEY SUBDIVIDING SECTIONS 13 AND 24, T. 20 S., R. 12 W., WM., AND RESURVEY
OF PREVIOUS SUBDIVISION OF SECTION 18, T. 20 S., R. 11 W., WM.,
Douglas County, Oregon

Survey for:
CROWN ZELLERBACH CORPORATION

Survey by:
WARREN D. HOOTMAN
Consulting Forester-Oregon Land Surveyor #399

Survey completed January 30, 1963

Prior survey records:

- A. Original Government notes, 1857
- B. Government resurvey notes, 1902, by Gen. William Byars, surveyor
- C. Re-survey work furnished by Crown Zellerbach Corporation.
Survey by H. P. Miller, 1947-48 of Chester R. Slonecker Property
- D. Survey subdividing Section 17, T. 20 S., R. 11 W., WM., for
Coos Bay Pulp Corporation. Survey by Warren D. Hootman, May
1959
- E. Survey subdividing Section 23, T. 20 S., R. 12 W., WM., for
Crown Zellerbach Corporation. Survey by Warren D. Hootman,
July 1960

Equipment used:
K. & E. Transit, 300 ft. tape and abney level

Basis for bearings:
 $S\frac{1}{2}$ of Section line common to Sections 23 and 24. Record bearing
from previous survey filed August 1960, N 0° 10' W

True lines marking property boundaries are blazed and tagged with Crown
Zellerbach Corporation Property Line Aluminum Tags.

FILED
RECEIVED

FEB 4 1963

COUNTY SURVEYOR
DOUGLAS COUNTY, ORE.

M 22-36

C. S. File No. 51/249
MAP FILE 24 151,52

SURVEY SUBDIVIDING SECTION 13 AND 24, T. 20 S., R. 12 W., WM., AND RESURVEY
OF PREVIOUS SUBDIVISION OF SECTION 18, T. 20 S., R. 11 W., WM., DOUGLAS
COUNTY, OREGON

This survey was ordered by Crown Zellerbach Corporation to retrace and extend
a previous subdivision survey by Crown Zellerbach Corporation personnel dur-
ing the winter of 1947 and 1948.

The map and field notes of this survey were furnished to me at the commence-
ment of the work, with the information that the original survey had not been
filed. It was the basis for the sale of a portion of the Chester R. Slonecker
property to the Crown Zellerbach Corporation. The lines and monuments on the
ground have, also, been the basis for the cutting of timber between that time
and the present date. As the survey developed we found that the monuments on
the ground faithfully represented the survey map provided. Therefore, I am
filing a reduced scale copy of the map of the Chester R. Slonecker Property,
furnished to me with the coordinate sheet data, which was on the face of the
original map and details the delineation of the Slonecker Property into the
parcels sold and retained by Mr. Slonecker. The bearings of the original sur-
vey were oriented by solar observation to the Oregon Coordinate Grid System,
South Zone.

My survey bases its bearings on my previous subdivision in Section 23, T. 20
S., R. 12 W., WM., specifically the $S\frac{1}{2}$ of the Section line common to Sections
23 and 24. The bearing of this line was established by solar observations
made at that time.

I start my survey at the Section Corner common to Sections 13 and 24 on the
Range line between T. 20 S., R. 11 W., WM., and T. 20 S., R. 12 W., WM.,
Douglas County, Oregon, said corner being marked by a $1\frac{1}{2}$ " iron pipe at the top
of a bank East of Slonecker's house, and witnessed as follows:

11" Spruce	S 17° 10' W., 48.10 ft.
14" Holly	S 22° 30' W., 44.60 ft.
12" Apple	N 27° 15' W., 35.50 ft.

I run a random line North between Sections 13 and 18

Section Corner ascend through pasture and heavy reproduction.
270 ft. break on to gentle slope and continue ascent.
580 top of ascent, descend.
855 creek flows SE, ascend.
1210 top of E-W spur, descend.
1350 draw, East, ascend.
1470 continue Northerly, crossing spur ridges and drainages flowing East.
2362 top of E-W spur, descend.
2472.09 N 0° 21' E of the Section Corner 13 and 24 I find a 1½" iron pipe for the W¼ Corner of Section 18, T. 20 S., R. 11 W., WM., which was witnessed by

30" Spruce S 2¼° E., 35.40 ft. (now a windfall)

60" Douglas Fir N 12½° E., 95.25 ft.

I mark an

Alder 16", S 60° E., 69.00 ft. ✓✓

From the W¼ Corner of Section 18

50 ft. draw N 60° E.
95 spur ridge, descend into shallow draw.
181.44 N 0° 18' E of the W¼ Corner for Section 18 I find a 1" iron pipe for the ¼ Corner of Section 13, T. 20 S., R. 12 W., WM., said corner being witnessed as follows:

24" Spruce snag S 3° W., 27.10 ft. (original BT)

I mark new trees as follows:

32" Hemlock S 50° W., 37.10 ft.

Schoolmarm Spruce N 52° W., 63.10 ft. ✓✓

From here my random line does not approximate the true line.

I continue Northerly along the Range line.

2531.52 N 1° 08' E of the E¼ Corner of Section 13 I find the iron pipe and 4" X 4" post marking the Closing Corner common to

Sections 7 and 18.

Then continuing Northerly along the Range line.

208.62 ft. N 0° 40' E to the center of the stump of the Alder tree marking the Section Corner common to Sections 12 and 13.

The stump of the Douglas fir 36", S 18° W., 9 links is in position but no scribe is visible. The Douglas fir 36",

N 51½° E., 30 links is a green tree with an obvious face.

I find no trace of the other Alder bearing trees.

I, then, return along my random line and offset to the calculated position of the N 1/16th Corner for Section 18 on the Range line. I set a 1" pipe with a 3" brass cap, from which

36" Spruce stump N 75° E., 11.45 ft.

48" Spruce stump S 5° E., 15.2 ft.

This corner lays on a West slope in a recently logged and burned area, about 70 ft. West of the logging road along the ridge.

I, then, offset from my random line and set the S 1/16th Corner for Section 13.

I set a 1" pipe with brass cap and mark the following bearing trees:

28" Alder S 34° W., 32.00 ft.

48" Spruce N 18° W., 70.70 ft.

The true line is as follows:

Section Corner Sections 13 and 24

N 0° 21' E., 1326.76 ft.

S 1/16th Corner Section 13

N 0° 21' E., 1145.33 ft.

W¼ Corner Section 18

N 0° 18' E., 181.44. ft.

E¼ Corner Section 13

N 1° 08' E., 1175.04 ft.

N 1/16th Corner Section 18

N 1° 08' E., 1356.48 ft.

Closing Corner Sections 7 and 18

N 0° 40' E., 208.62 ft.

Section Corner Sections 12 and 13

Then from the Section Corner for Sections 13, 24 and 18 I run a random line
Westerly between Sections 13 and 24

Section Corner descend.

330 ft. edge of bottom.

630 ascend from bottom.

1440 top of spur ridge, descend.

2010 cross draw and ascend.

2580 Forest Service Road.

2700 top of divide, descend.

3950 creek, N-W, ascend,

4560 top of spur.

5015 top of spur, descend.

5207.70 Section Corner Sections 13, 14, 23 and 24, which is a 1½" iron pipe witnessed by three of the original bearing trees, as follows:

56" Spruce S 52° W., 31.7 ft.

42" Douglas fir N 3° W., 51.5 ft.

44" Douglas fir N 4° W., 44.2 ft.

Returning along my line I set the ¼ Corner and the E 1/16th Corner common to Sections 13 and 24 at their proportioned positions.

¼ Corner Sections 13 and 24, 1" brass capped pipe, witnessed as follows:

8" Hemlock S 70° W., 30.5 ft.

32" Spruce N 60° W., 50.6 ft.

This corner is about 10 ft. West of the west cut slope of the Forest Service Road.

E 1/16th Corner Section 13 and 24, 1" pipe with 3" brass cap, witnessed by

30" Hemlock S 10° E., 32.8 ft.

36" Douglas fir N 32° W., 18.5 ft.

This corner lays on a South slope about 50 ft. South of the top of a spur ridge.

The true line is as follows:

Section Corner Sections 13, 24 and 18

N 89° 53' W., 1289.67 ft.

E 1/16th Corner Sections 13 and 24

N 89° 53' W., 1306.00 ft.

1/4 Corner Sections 13 and 24

N 89° 53' W., 2612.00 ft.

Section Corner Sections 13, 14, 23 and 24

Beginning again at the Section Corner Sections 13, 24 and 18, I run Southerly along the Range line as follows:

Section Corner descend.

240.56 ft. Closing Corner Sections 18 and 19, which is a 1 1/2" pipe in a swamp, approximately 15 ft. from the toe of the slope. - V B T's.

Continuing Southerly across the swamp and counting the distance from the beginning Corner.

1470 emerge from swamp onto point.

1550 swamp.

2050 shoulder of Five Mile Creek Road. Ascend across bench.

2706.60 E 1/4 Corner Section 24, this point is marked by a 1" pipe with lead filled bell marked for E 1/4 Corner Section 24 and witnessed by a 64" Spruce stump S 66° 13' W., 16.40 ft. The scribing is visible.

5352.40 Continuing Southerly on a random line and counting as before Section Corner Sections 24, 25 and 19. This corner lays 40 ft. East of a small creek and 37 ft. South of a logging road up the South side of Perkins Creek. The corner is witnessed by the stumps of the original spruce trees to the East, which were:

40" Spruce N 15° E., 25.08 ft.

24" Spruce S 35° E., 38.28 ft.

I set a new corner with a 1" brass capped pipe. ✓

Then, continuing Southerly

5576.80 ft.

post marking corner position for Closing Corner Sections 19 and 30. The original 18" Spruce N 44° E., 21.78 ft. and the original 20" Hemlock S 80° W., 14.52 ft. are windfalls; the Hemlock SE is apparently gone. The post agrees with the closest position we can establish with the position of the BT's. I reset this corner with a 1" brass capped pipe and mark new BT's as follows:

4" Hemlock S 78° E., 10.7 ft.

4" Western Red Cedar S 4° W., 7.8 ft. ✓ ✓

I return along my line and set the $W\frac{1}{4}$ Corner for Section 19 at the midpoint between the Closing Corners Sections 18 and 19, 19 and 30, and the N 1/16th Corner for Section 19 at the $\frac{1}{4}$ distance. The N 1/16th Corner Section 19 lays on a low point surrounded by swamp, to the West of the County Road.

$W\frac{1}{4}$ Corner Section 19, 1" brass capped pipe witnessed by

8" Douglas fir N 32° E., 20.3 ft.

6" Douglas fir S 63° E., 6.8 ft. ✓ ✓

N 1/16th Corner Section 19, 1" brass capped pipe witnessed by

10" Spruce N 8° E., 3.9 ft.

14" Spruce East 13.2 ft.

The true distances and bearings for this line are as follows:

Section Corner Sections 13, 24 and 18

S 1° 58' E., 240.56 ft.

Closing Corner Sections 18 and 19

S 2° 09' E., 1334.06 ft.

N 1/16th Corner Section 19

S 2° 09' E., 1131.97 ft.

$E\frac{1}{4}$ Corner Section 24

S 0° 17' E., 202.09 ft.

W $\frac{1}{4}$ Corner Section 19

S 0° 17' E., 2443.71 ft.

Section Corner Sections 24 and 25

S 0° 23' E., 224.40 ft.

Closing Corner Sections 19 and 30

I, now, go to the E $\frac{1}{4}$ Corner of Section 13 on the Range line, and run a random line Westerly to the $\frac{1}{4}$ Corner common to Sections 13 and 14, T. 20 S., R. 12 W., WM., The true bearing and distance of this line is

S 89° 52' W., 5262.55 ft.

Then, from the $\frac{1}{4}$ Corner common to Sections 13 and 14, which is a 2" iron pipe witnessed by the original bearing trees, which were

48" Spruce East 26.40 ft.

30" Spruce N 6° 20' W., 21.12 ft.

I run Southerly on a random line.

descend.

200 ft. creek flows SW, ascend.

390 descend.

710 enter bottom.

760 Creek flows West, continue across bottom and ascend.

1200 descend.

1425 enter bottom.

1440 creek 4 ft. wide flows East, cross bottom and ascend steep slope.

2020 break on to gentle East slope; continue ascent.

2372 top of spur, descend.

2630.40 Section Corner Sections 13, 14, 23 and 24, as previously described.

The true bearing and distance of this line is S 0° 51' E., 2630.40 ft.

I return along my line and set the S 1/16th Corner common to Sections 13 and 14 at the midpoint, 1315.20 ft. N 0° 51' W of the Section Corner Sections 13, 14, 23 and 24, by driving a 1" brass capped pipe and marking the following bearing trees:

18" Hemlock N 80° E., 33.0 ft.

96" Spruce S 78° W., 21.0 ft.

Then from the $\frac{1}{4}$ Corner common to Sections 13 and 24 I run a random line North-
erly through the center of Section 13 to the $\frac{1}{4}$ Corner common to Sections 12
and 13, which is marked by a 1" pipe and 4" scribed post and the remains of
what may be the original Alder bearing tree, N 85° E., 31.02 ft.

The true distance and bearing of this line is

N 0° 44' W., 5377.34 ft.

The true Center lines of Section 13 are as follows:

Beginning at the $\frac{1}{4}$ Corner common to Sections 13 and 24

N 0° 44' W., 1321.18 ft.

CS 1/16th Corner Section 13

N 0° 44' W., 1321.18 ft.

CS $\frac{1}{4}$ Corner Section 13

N 0° 44' W., 2734.98 ft.

$\frac{1}{4}$ Corner Sections 12 and 13

Then, from the $\frac{1}{4}$ Corner Sections 13 and 14

N 89° 52' E., 2617.15 ft.

CS $\frac{1}{4}$ Corner Section 13

N 89° 52' E., 2645.40 ft.

E $\frac{1}{4}$ Corner Section 13

Then, from the Government notes for fractional Section 13 I determine that the
E $\frac{1}{2}$ of the Center line would be 39.775 chains. Therefore, I proportion the E $\frac{1}{2}$
of the Center line of Section 13 in accordance with the above figure, counting
the West portion as regular. Then, the Center line E 1/16th Corner Section 13
lays 1330.02 ft. from the Center of Section 13 and 1315.38 ft. from the E $\frac{1}{4}$
Corner of Section 13.

Then, from the S 1/16th Corner for Section 13 on the Range line I run a random
line Westerly through the center of the SE $\frac{1}{4}$ of Section 13.

From the 1/16th Corner

ascend head of draw.

150 ft. top of spur ridge, descend across bench.

1314.45 ft. temporary SE 1/16th Corner

2524.50 tie to random N-S Center line of Section 13.

The true bearing and distance of the E-W Center line of the SE $\frac{1}{4}$ of Section 13 is

S 89° 59' W., 2620.68 ft.

Then, from the E 1/16th Corner common to Sections 13 and 24 I run a random line Northerly through the Center of the SE $\frac{1}{4}$ of Section 13 and find the line to be

N 0° 13' W., 2647.76 ft.

I then set the SE 1/16th Corner of Section 13 with a 1" brass capped pipe, N 0° 13' W., 1323.88 ft. from the E 1/16th Corner common to Sections 13 and 24 and S 89° 59' W., 1302.67 ft. from the S 1/16th Corner of Section 13 on the Range line.

The corner is witnessed by

26" Spruce S 38° E., 9.4 ft.

42" Spruce N 68° W., 16.0 ft.

The controlling corners on the Center lines of Section 13 were not set. The random line survey points from which these monuments could be set were destroyed in grading and resurfacing of the roads in this area prior to the completion of the survey.

I, now, go to the Section Corner common to Sections 24 and 25, on the Range line and run Westerly on a random line between Sections 24 and 25.

I run Westerly to the Five Mile Creek County Road and triangulate across the Five Mile Creek Swamp, and continue Westerly to the Section Corner Sections 25, 26 and 24, said point being a 1" iron pipe and witnessed by the original bearing trees as follows:

Spruce 36", N 66° E., 33.66 ft.

Spruce 38", S 65° E., 13.20 ft.

Spruce 36", N 55° W., 8.58 ft.

Spruce 48", S 76° W., 26.40 ft.

Said point being 5229.90 ft. N 89° 34' W of the Section Corner Sections 24 and 25.

Thence Continuing N 89° 34' W., 86.62 ft. to the Closing Corner for Sections 23

and 24, on the North line of Section 26, which is, also, an iron pipe witnessed by the original bearing trees which were:

28" Spruce N 20° E., 26.40 ft.

30" Hemlock N 23½° W., 19.8 ft.

I, then, retrace my random line and offset to the calculated position of the ¼ Corner Sections 24 and 25. This area has been clear cut, logged and burned several years ago. We can find no evidence of the original corner. Therefore, I set the ¼ Corner Sections 24 and 25 on line between the Section Corners and at the proportioned distance, making the line as follows:

Section Corner Sections 24, 25 and 19

N 89° 34' W., 2744.42 ft.

¼ Corner Sections 24 and 25

N 89° 34' W., 2485.47 ft.

Section Corner Sections 25, 26 and 24

N 89° 34' W., 86.62 ft.

Closing Corner Sections 23, 24 and 26

The ¼ Corner is a 1" brass capped pipe witnessed by

5" Alder S 5° W., 9.0 ft.

Spruce stump N 85° E., 12.0 ft. ✓

Then, from the E¼ Corner of Section 24 I triangulate across Five Mile Creek Swamp and continue Westerly to the ¼ Corner common to Sections 23 and 24, which is marked by a 1" iron pipe and witnessed by

22" Hemlock S 43° W., 4.0 ft.

16" Alder S 3° E., 10.1 ft.

I find the distance and bearing of the centerline of Section 24 to be

N 88° 48' W., 5315.69 ft.

I, then, set the Center of Section 24, N 0° 28' E., 2681.58 ft. from the ¼ Corner Sections 24 and 25, and S 0° 28' W., 2653.70 ft. from the ¼ Corner Sections 13 and 24. Also, 2711.98 ft. N 88° 48' W of the E¼ Corner of Section 24 and S 88° 48' E., 2603.71 ft. from the ¼ Corner Sections 23 and 24. This point being the intersection of the true centerlines of Section 24.

The $CS\frac{1}{4}$ Corner of Section 24 is a 1" brass capped pipe witnessed by

36" Douglas fir N 28° E., 29.0 ft.

48" Douglas fir S 27° W., 4.0 ft. ✓

Then, from the Government plat and field notes I determine the $E\frac{1}{2}$ of the Center line of Section 24 to be 40.96 chains. I set the Center line East 1/16th Corner on the true line between the $E\frac{1}{4}$ Corner of Section 24 and the Center of Section 24 at the proportioned distance, making the first portion 1324.21 ft. and the second portion 1387.77 ft., counting Easterly from the Center of Section.

The CE 1/16th Corner is marked by a 1" brass capped pipe witnessed by:

48" Douglas fir stump S 86° W., 32.0 ft.

30" Douglas fir stump N 40° E., 15.2 ft.

These stumps are too rotten to hold a scribe. I tag each with a yellow section line tag facing the corner. No other trees are available.

Then, from the E 1/16th Corner common to Sections 13 and 24, I run S $0^{\circ} 06'$ W as follows

	descending through timber.
320 ft.	fork of creek flowing East toward pasture. Ascend steep.
630	on spur ridge. Ascend across draw.
1020	top of ridge. Descend.
1210	draw East, ascend.
1782	top of spur, descend.
2570	draw East, ascend.
2679.02	CE 1/16th Corner S ection 24.

I, now, retrace the subdivision of Section 18.

Starting at the iron pipe marking the Closing Corner for Sections 18 and 19, T. 20 S., R. 11 W., WM., which is a $1\frac{1}{2}$ " iron pipe in the swamp South of Slonecker's house, S $1^{\circ} 58'$ W., 240.56 ft. from the Section Corner Sections 13 and 24, T. 20 S., R. 12 W., WM., I run S $88^{\circ} 09'$ E., between Sections 18 and 19.

S $88^{\circ} 09'$ E across Five Mile Creek bottom.

900 ft. County Road, ascend.

1143.96 W 1/16th Corner 18 and 19. 1" iron pipe witnessed by
14" Spruce N $13\frac{1}{2}^{\circ}$ E., 32.80 ft.
Spruce stump 24" N 88° W., 44.75 ft.
S $87^{\circ} 56'$ E on true line, descend.

1333.40 $\frac{1}{4}$ Corner Sections 18 and 19, marked by a 3/4" pipe
witnessed by
24" Spruce stump S 17° W., 15.5 ft.
30" Spruce stump N 59° W., 19.8 ft.

This corner lays about 30 ft. South of the top of a spur ridge.

From this corner I run North through the Center of Section 18 as follows:

30 ft. top of spur ridge, descend.

680 draw, west, ascend.

1050 descend.

1425 creek, NW, ascend.

1970 cross draw, West, under power line, ascend.

2110 descend.

2700.45 Center of Section 18, N $1^{\circ} 16'$ E of the $\frac{1}{4}$ Corner common to
Sections 18 and 19. The Center of Section is marked by a 1"
iron pipe with bell filled with lead and witnessed by a
64" Spruce Stump S $12\frac{1}{2}^{\circ}$ W., 43.37 ft.
60" Spruce stump N $29\frac{1}{2}^{\circ}$ W., 14.7 ft.

As shown in the field notes of the previous survey.

I mark

6" S pruce S 66° W., 21.8 ft. ✓

This corner is about 100 ft. East of the County Road.

Then continuing North through the Center of Section 18

80 ft. creek flows west, ascend.

180 top of ascent.

870 Five Mile County Road.

970 Five Mile Creek, SW, enter pasture.

1395.35 ft. N 1° 26' E of the Center of Section 18 I find a 3" pipe set for the Center North 1/16th Corner of Section 18. This point lays in an E-W fence. The pipe is witnessed by

14" Alder N 12½° W., 22.66 ft.

40" Alder S 19° W., 151.26 ft.

I mark a

16" Spruce S 2° E., 92.5 ft.

I continue N 1° 26' E

300 ft. leave bottom and ascend West side of spur ridge.

910 descend.

1060 creek flows SW, ascend.

1394.36 ¼ Corner Sections 7 and 18, which I establish from the stump of the original bearing tree. S 83° W., 27.06 ft. The bearing tree S 18½° E., 31.02 ft. is gone. The Corner lays on the cut slope of a cat road in a clear cut area. The stumps to the North are too rotten to hold a scribe. The Corner point is marked with a 1" brass capped pipe. ✓

I, now, go to the closing Corner for Sections 7 and 18, and run Easterly between Sections 7 and 18 as follows:

70 ft. old road, ascend.

1050 top of ridge.

1157.30 tie to iron bolt marking W 1/16th Corner Sections 7 and 18.

Witnessed by

14" Maple N 9° E., 10.3 ft.

72" S pruce S 82° W., 33.4 ft.

1520 cross top of spur ridge and descend along steep North slope.

2140 point between creek fork, ascend.

2480 top of spur.

2552.40 ¼ Corner Sections 7 and 18 as previously described.

The true lines are as follows:

Closing Corner Sections 7 and 18

S 89° 23' E., 1157.30 ft.

W 1/16th Corner Sections 7 and 18

S 89° 40' E., 1395.44 ft.

1/4 Corner Sections 7 and 18

Then, from the 1/4 Corner Sections 7 and 18 I run Easterly as follows:

220 ft. top of spur ridge, descend.
770 creek, flows South, ascend.
1150 top of spur ridge. Made a search for E 1/16th Corner Sections 7 and 18 but area possible is in cat road or log pile. Descend along South slope.
2658.78 Section Corner Sections 7, 8, 17 and 18, which is a 1 1/4" iron pipe witnessed by

15" Alder N 5° W., 52.5.ft.

19" S pruce N 20° E., 36.5 ft.

This line is

S 84° 16' E., 2658.78 ft.

Then, from the Center of Section 1/4 Corner of Section 18, I run S 87° 13' E on the true line to the 1/4 Corner common to Sections 17 and 18.

ascend gentle West slope through heavy reproduction, North of timber.

1329.44 ft. I set the Center line East 1/16th Corner with a 1" brass capped pipe and mark bearing trees as follows:

22" Hemlock N 5° E., 24.6 ft.

38" Douglas fir N 22° W., 43.1 ft.

enter recent clear cut area.

1790 top of spur ridge, descend.

2658.88 1/4 Corner 17 and 18, which is witnessed by the stumps of the recorded bearing trees, as recorded with the subdivision of Section 17, being

10" Hemlock S 4° 15' E., 39.3 ft.

26" Douglas fir S 78° 45' W., 19.9 ft.

Then, North on a compass line between Sections 17 and 18. This is run to verify the distances previously recorded.

descend.

70 ft. creek flows NW, ascend into timber.

160 top of low spur, descend across small draws.

1329.90 N 1/16th Corner Sections 17 and 18, which is a 1" iron pipe in place and bearing trees standing. Bearing trees as follows:

24" Douglas fir S 79° E., 4.5 ft.

24" Douglas fir S 20° W., 18.5 ft.

ascend.

1380 top of spur ridge, descend through cut over and heavy brush.

2100 County Road. Then cross Five Mile Creek into pasture.

2660 Section Corner Sections 7, 8, 17 and 18. This checks with my previously recorded distance which I use.

Then, from the W $\frac{1}{4}$ Corner Section 18 I run S 87° 47' E as follows:

descend through recent blow down along blazed line.

190 ft. creek flows SE, ascend South side of spur.

880 top of spur, descend along South side of spur.

1155.30 Center line West 1/16th Corner Section 18. Corner is a 2" iron pipe witnessed by

36" Hemlock N 50° W., 45.50 ft.

30" Douglas fir S 5° E., 26.5 ft.

Most of the timber to the North and East and the last 100 ft. to the Corner was blown down this fall.

Then, N 0° 57' E along the Center line of the NW $\frac{1}{4}$ of Section 18.

130 ft. top of spur on large Spruce rootwad. Descend steep North slope through timber.

540 draw, East to corral, ascend.

910 top of spur, descend through blow down.

1300 creek flows East to School House,

1374.48 ft. NW 1/16th Corner of Section 18. The Corner point has been destroyed by a windfall. I establish the Corner position from the field notes from the Crown Survey, by driving a 1" brass capped pipe from which

72" Douglas fir N $61\frac{1}{2}^{\circ}$ W., 15.86 ft.

40" Spruce N 75° E., 48.92 ft.

Then, N $88^{\circ} 37'$ W., ascending North side of draw.

1010 ft. top of ridge at road. Descend through cut over.

1140.35 N 1/16th Corner Section 18 on the Range line.

Then, returning to the NW 1/16th Corner of Section 18, I run S $88^{\circ} 37'$ E., ascend through timber, along blazed line.

380 ft. top of low spur, descend.

480 draw, flows south.

620 ascend.

1060 enter swamp.

1386.83 Center line N 1/16th Corner Section 18.

Then, S $85^{\circ} 45'$ E through the Center of the NE $\frac{1}{4}$ of Section 18. across pasture along old fence.

400 ft. Five Mile Creek.

510 County Road, ascend along North slope through heavy reproduction.

1110 top of spur ridge.

1329.42 I set the NE 1/16th Corner of Section 18 with a 1" brass capped pipe and mark bearing trees as follows:

8" Alder S 50° W., 6.3 ft.

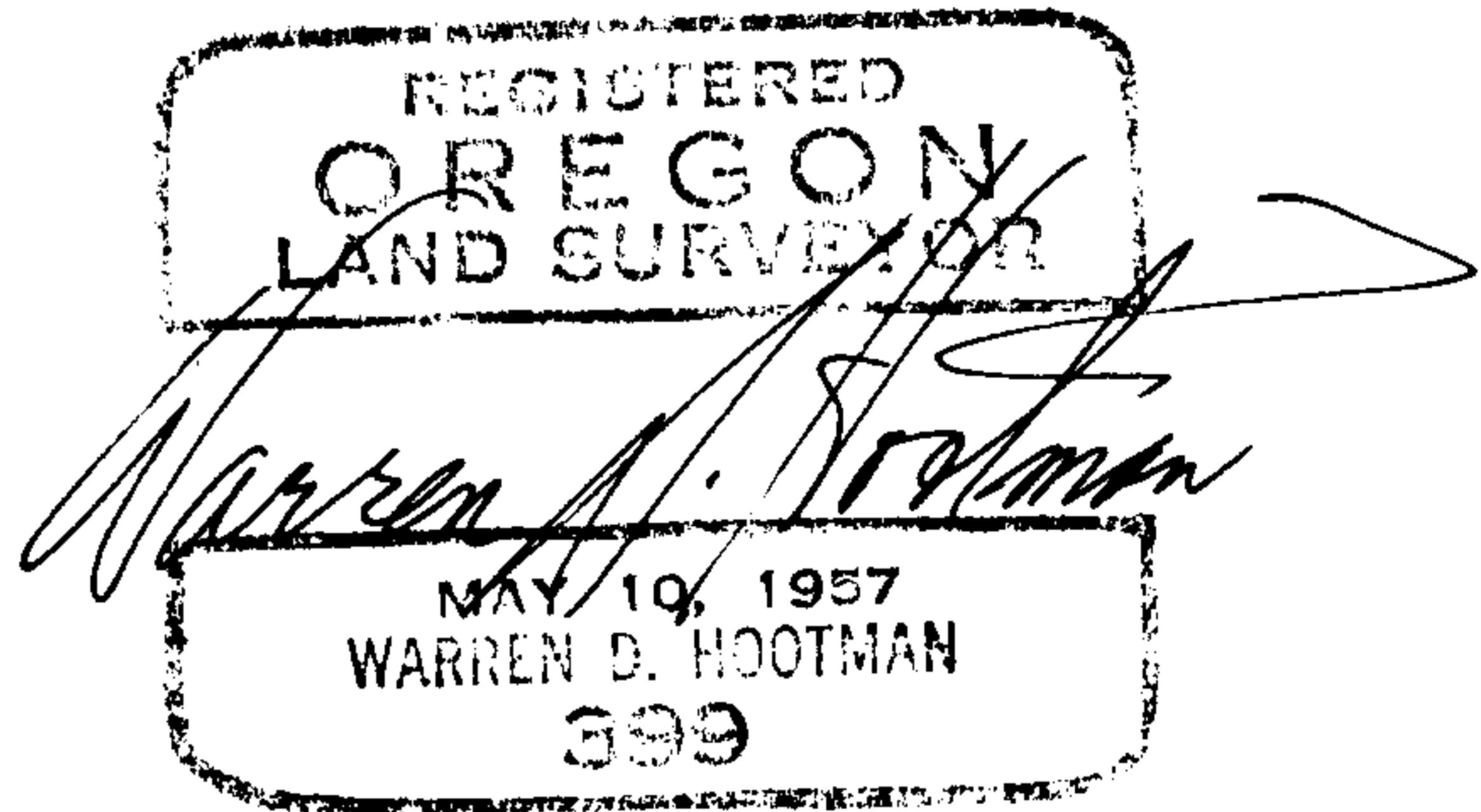
5" Spruce N 30° W., 13.6 ft.

This area was cleared for power lines after the 1948 survey. No evidence of the previous Corner exists but we paralleled the blazes marked with aluminum tags made in the previous survey.

Then, S 1° 18' W along the Center line of the NE $\frac{1}{4}$ of Section 18, ascend through reproduction.

460 ft. power lines.
560 top of ridge, descend.
1150 ascend.
1362.06 Center line E 1/16 Corner Section 18.

End of Report



FILED
RECEIVED

FEB 4 1963

COUNTY SURVEYOR
DOUGLAS COUNTY, ORE.