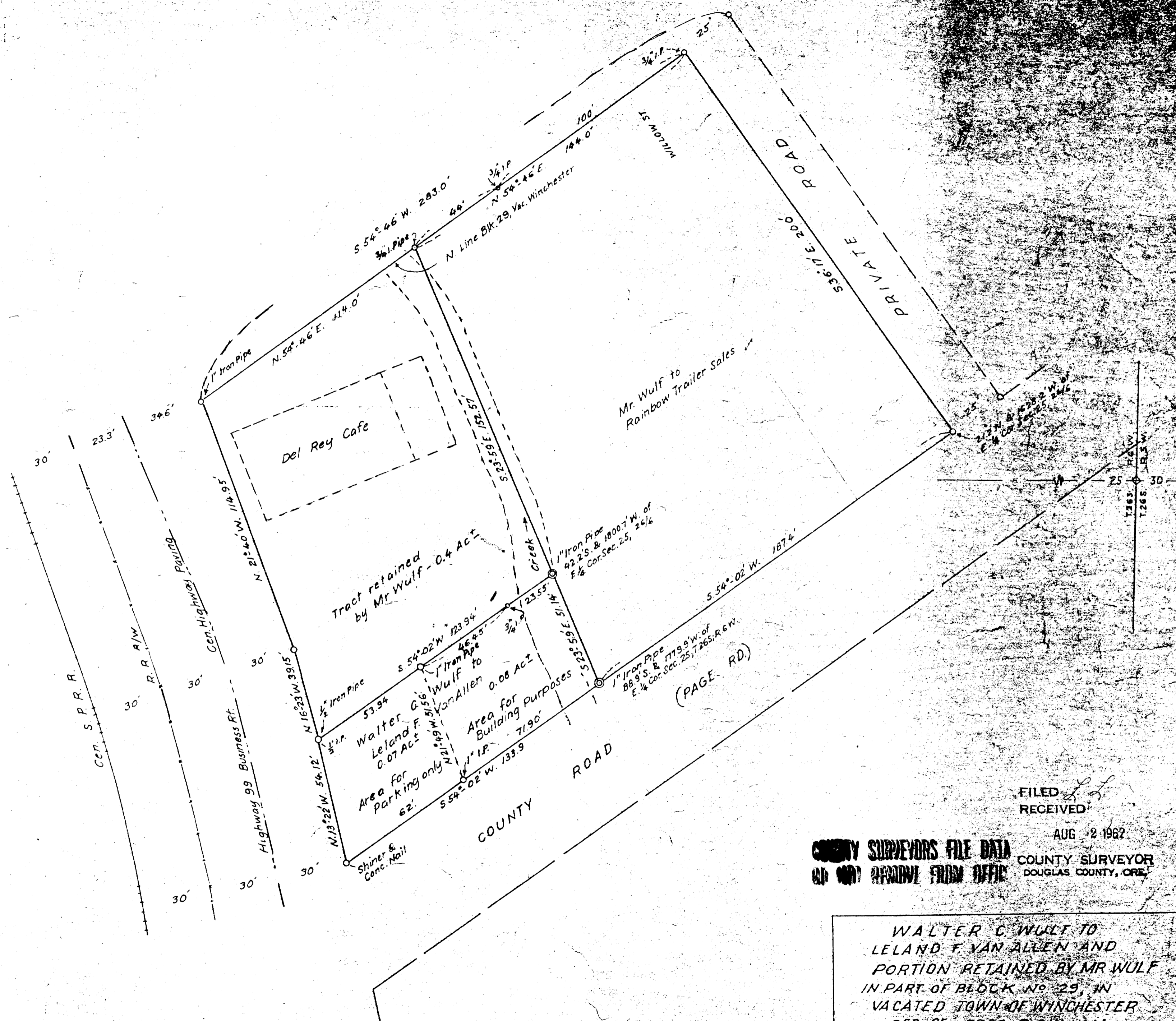
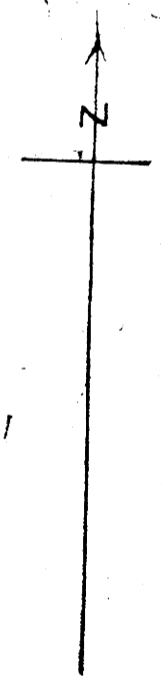


M24-5

E. LINE 250' FREEMAN P.W.



FILED  
RECEIVED

AUG 2 1962

COUNTY SURVEYORS FILE DATA  
DO NOT REMOVE FROM OFFICE

COUNTY SURVEYOR  
DOUGLAS COUNTY, ORE.

WALTER C. WULF TO  
LELAND F. VAN ALLEN AND  
PORTION RETAINED BY MR WULF  
IN PART OF BLOCK No 29, IN  
VACATED TOWN OF WINCHESTER  
SEC. 25, T26S, R63N, W.M.  
DOUGLAS COUNTY, OREGON  
MAY-JUNE, 1962

*[Handwritten signature]*

S.A.C.W.