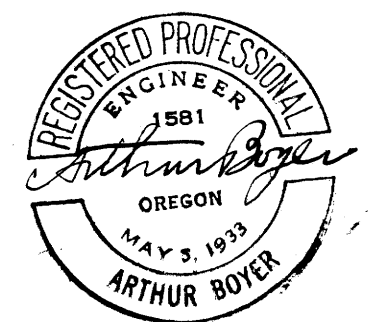
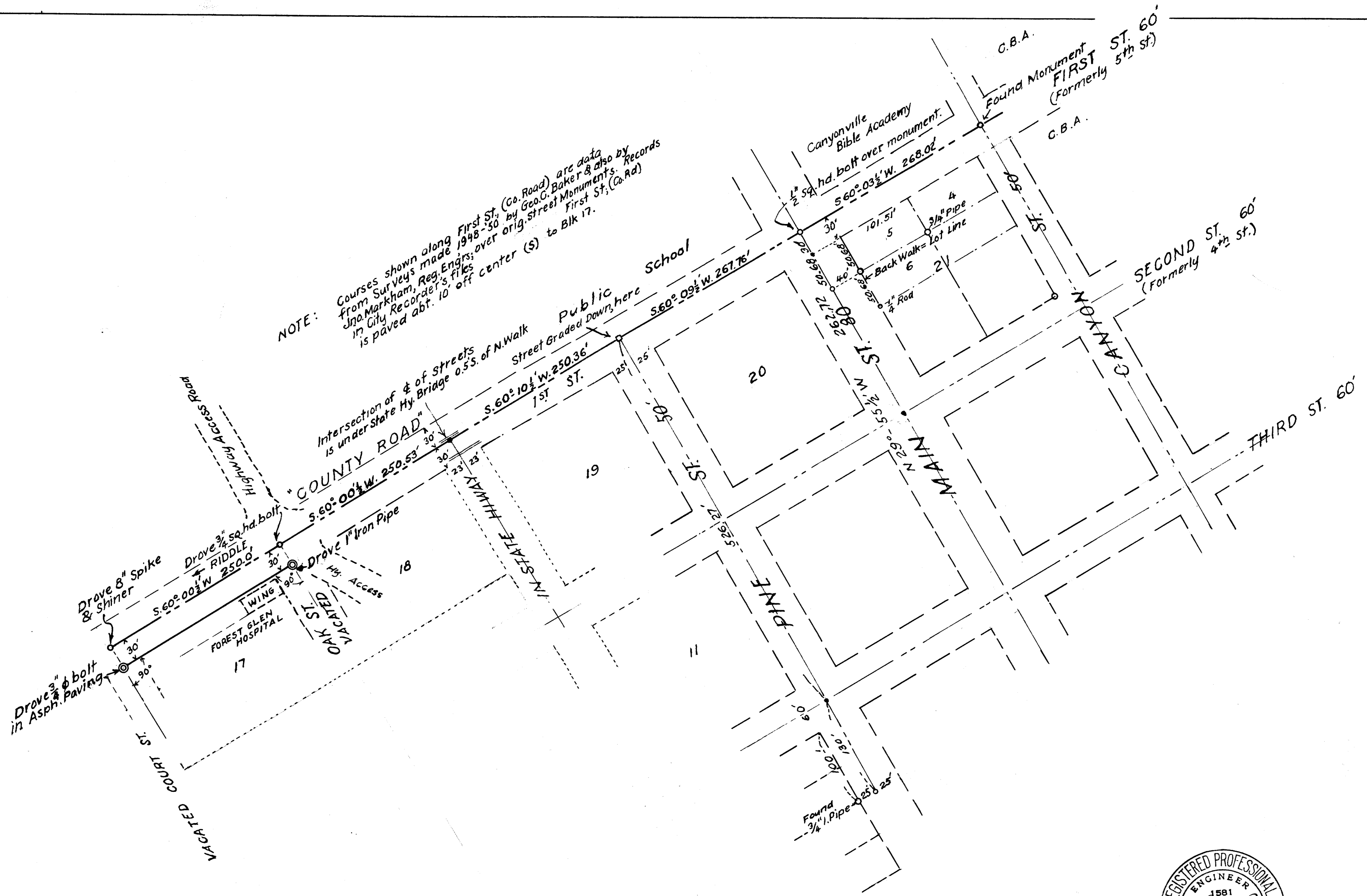




NOTE: Courses shown along First St. (Co. Road) are data from surveys made 1948-50 by Geo. G. Baker & also by Jno. Markham, Reg. Engrs; over orig. street monuments in City Recorder's files to Blk 17. First St. (Co. Rd) is paved abt. 10' off center (S).



COUNTY SURVEYORS FILE DATA
DO NOT REMOVE FROM OFFICE

FILED *L.L.*
RECEIVED
DEC 11 1962
COUNTY SURVEYOR
DOUGLAS COUNTY, ORE.

FOREST GLEN HOSPITAL
N. LINE BLOCK 17,
CANYONVILLE, ORE.
NOV. 1962 *AB* 1" = 100'