

COUNTY SURVEYORS FILE DAT
DO NOT REMOVE FROM OFFICE

FILED *L.L.*
RECEIVED

OCT 24 1962

S. 6, T. 21 S., R. 5 W. W.M.

COUNTY SURVEYOR
DOUGLAS COUNTY, ORE.

Woolley Logging Co. ^{For}

DRAIN, Oregon

Scale: 1" = 500'

Oct. 1962

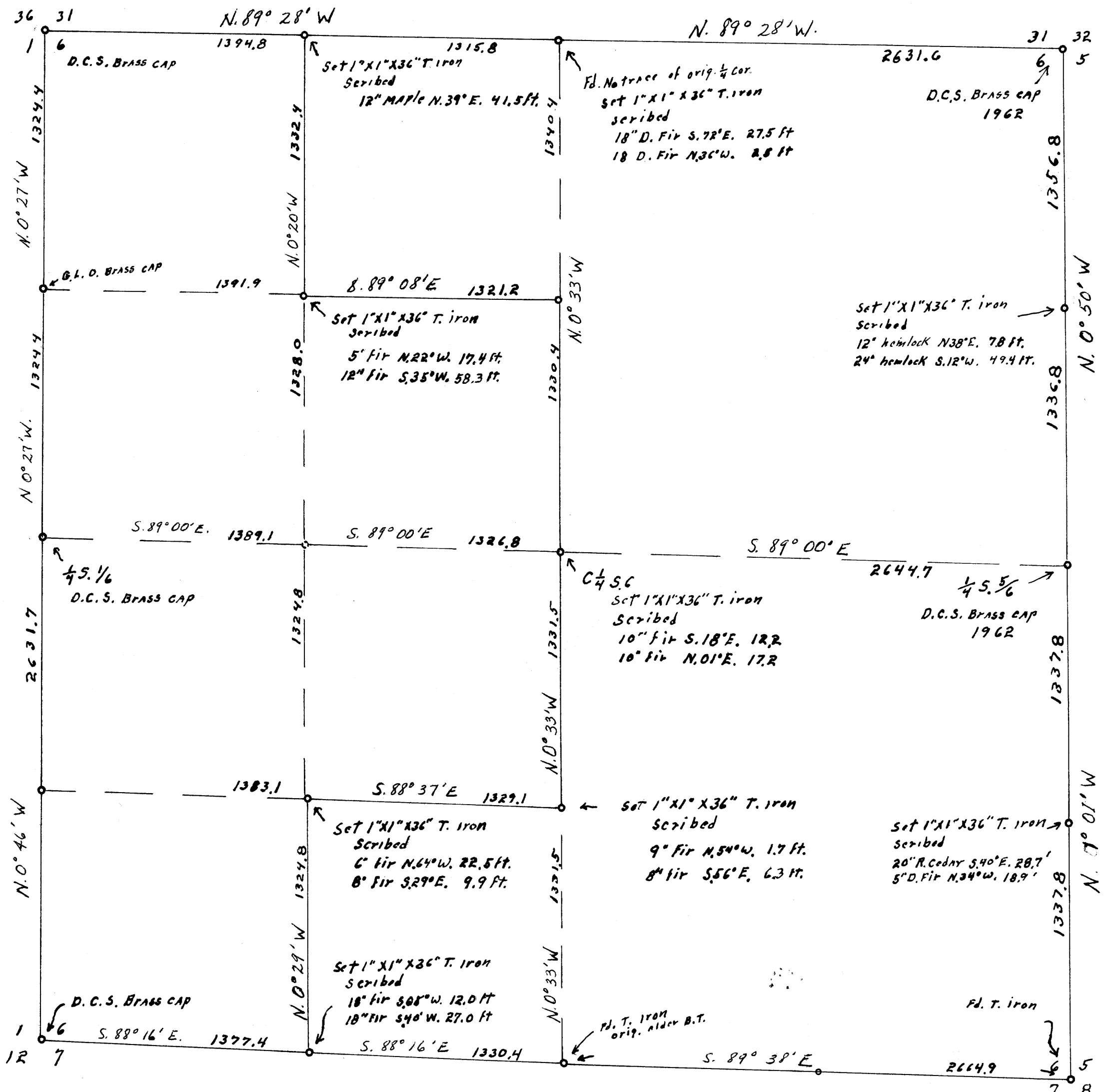
REGISTERED
OREGON
LAND SURVEYOR

Wilford N. Haines

MAY 7, 1948
WILFORD N. HAINES
239

N 0° 20' E.

N 0° 04' E.



SEE PRINT FOR
BEARINGS