

COUNTY SURVEYORS FILE DATA
DO NOT REMOVE FROM OFFICE

FILED *LL*
RECEIVED

OCT 4 1962

COUNTY SURVEYOR
DOUGLAS COUNTY, ORE.

COUNTY SURVEYOR'S OFFICE
DOUGLAS COUNTY OREGON

BALDRIDGE & LEWIS MILL PROPERTY
SECTION 17 T. 22S., R. 5W., W.M.
DRAIN OREGON

BEN B. IRVING COUNTY SURVEYOR
Surveyed May 1946

SCALE 1" = 100'



Stone with
ball alongside

Bolt

50'19"E 380'

Bolt

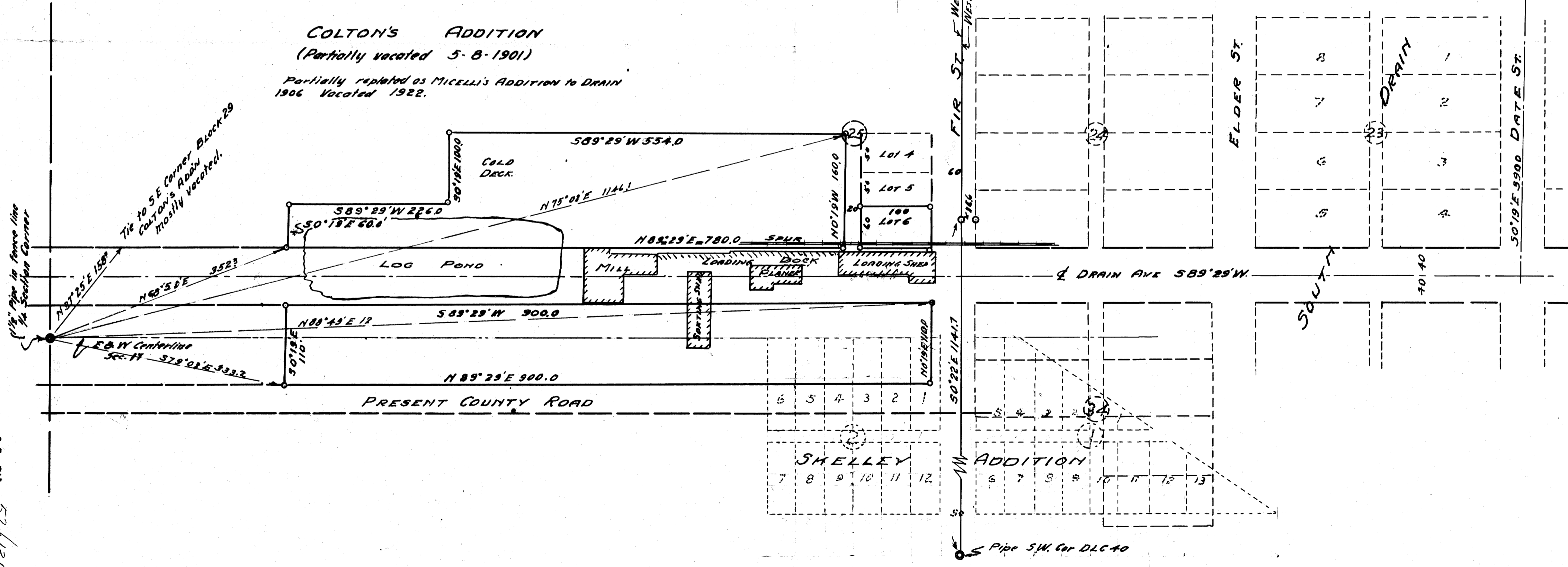
50'19"E 390' DATE ST.

C.S. FILE 52/131
BY FILE M 24-24

COLTON'S ADDITION
(Partially vacated 5-8-1901)

Partially replatted as MICELLI'S ADDITION to DRAIN
1906 Vacated 1922.

1/2" Pipe in fence line
1/4" Southern Corner
Tie to SE Corner Block 29
Colton's ADDN
Mostly vacated.



C.S. FILE 52/131
BY FILE M 24-24

Pipe SW. Cor DLC 40

1