

COUNTY SURVEYORS FILE DATA
DO NOT REMOVE FROM OFFICE

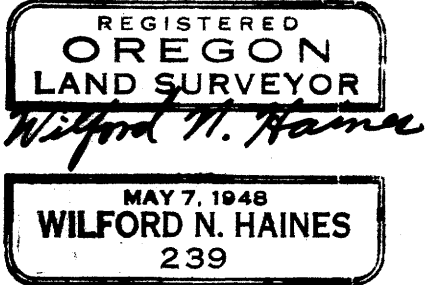
Note See C.S. File 41-344
for survey line 8/17

MAP FILE M.241-23

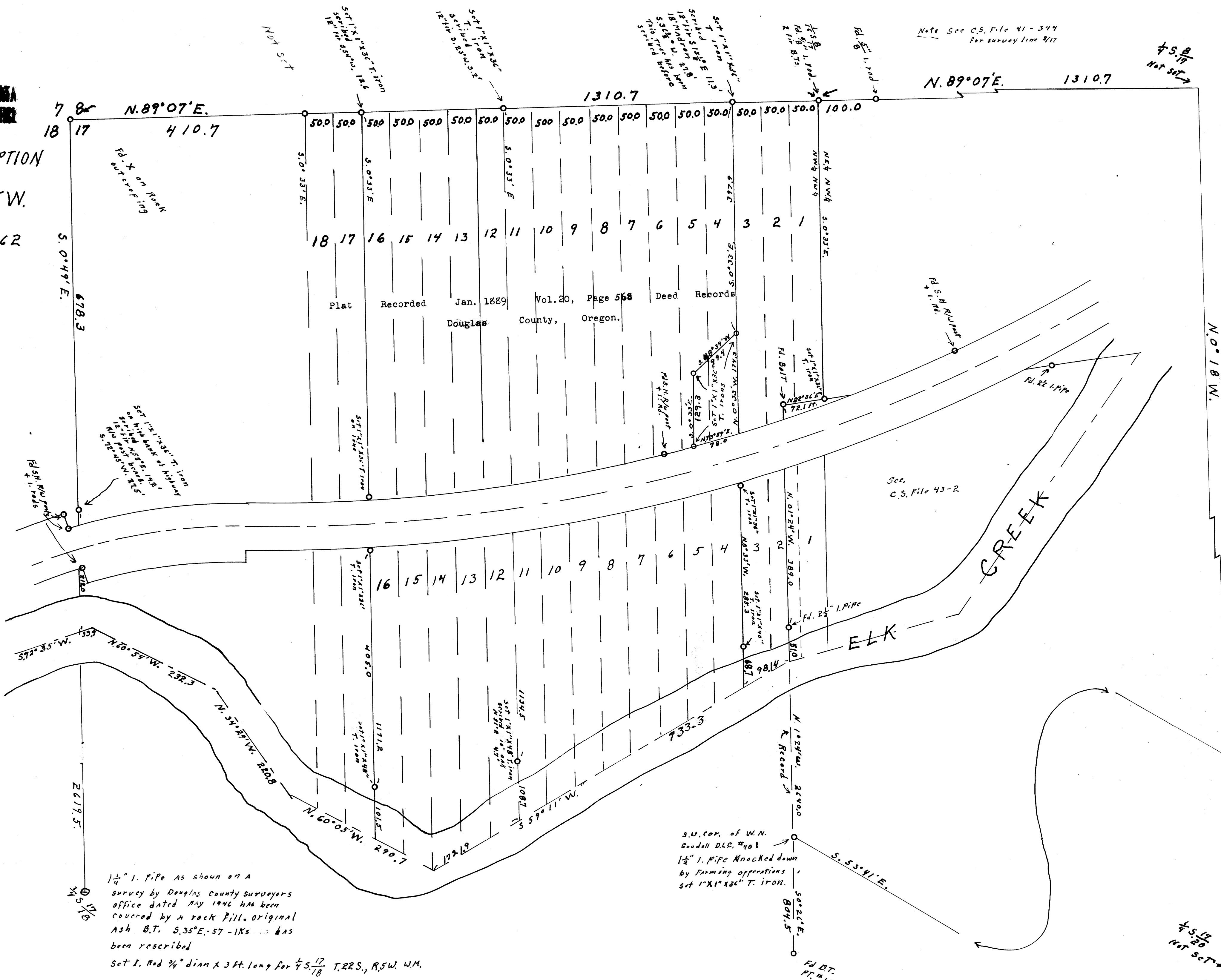
SURVEY FOR DEED DESCRIPTION
NW 1/4 NW 1/4 SECT. 17, T.22S., R.5W.

Scale: 1" = 100'
FOR W. HAINES

1962



FILED RECEIVED
OCT 4 1962
COUNTY SURVEYOR
DOUGLAS COUNTY, ORE.



4S. 17
Not Set

N. 0° 18' W.

4S. 18
Not Set

M. 24-23