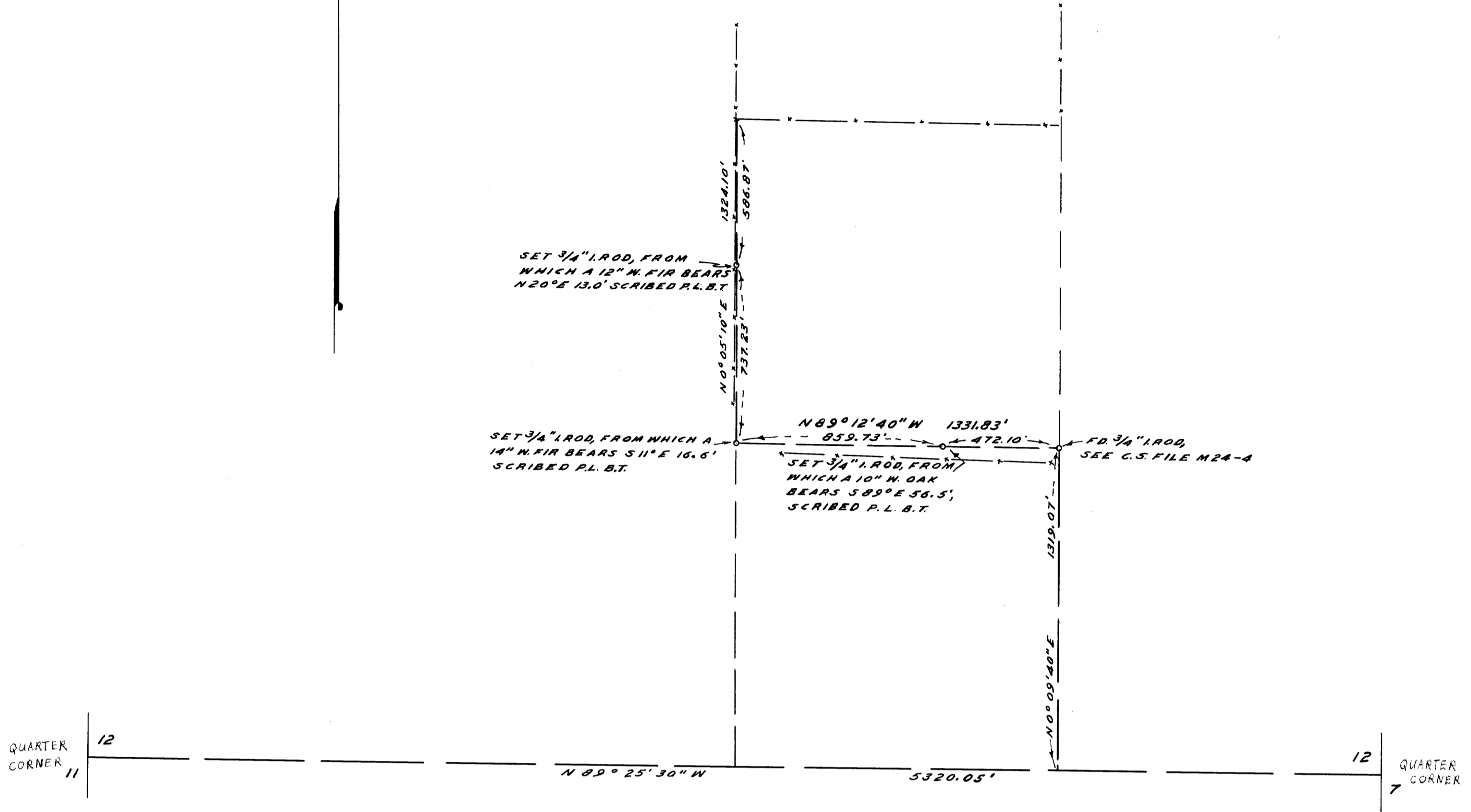


NOTE: BEARINGS BASED ON  
C.S. FILE M24-4

NOTE:  
SEE C.S. FILE 52/101; M24-4,  
FOR SURVEY & OFFSETS.



SURVEY TO MONUMENT LINES,  
SECTION 12, T.29S., R.9W., W.M.

SURVEYED JULY 28, 1962  
JAMES W. BYRON

BY  
SCALE 1" = 400'

SURVEYED FOR M. RENTZ  
COUNTY SURVEYORS FILE DATA  
DO NOT REMOVE FROM OFFICE

FILED  
RECEIVED  
AUG 20 1962  
COUNTY SURVEYOR  
DOUGLAS COUNTY, OREGON

REGISTERED  
OREGON  
LAND SURVEYOR  
*James W. Byron*  
JAMES W. BYRON  
303