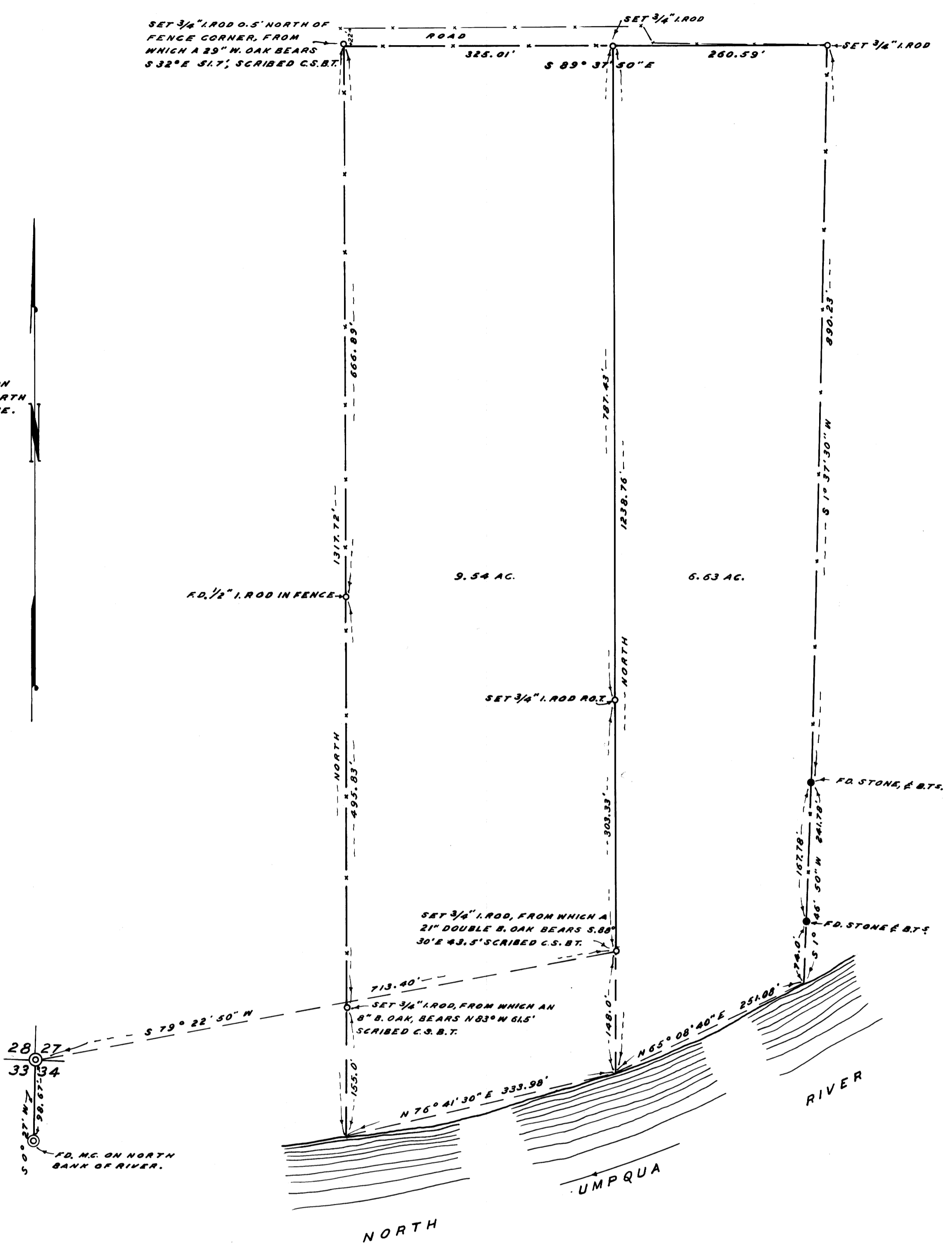


NOTE: BEARINGS BASED ON
DEED BEARING OF NORTH
ALONG THE WEST LINE.



COUNTY SURVEYOR'S OFFICE
DOUGLAS COUNTY, OREGON

SURVEY FOR DEED DESCRIPTION,
SECTION 27, T26S., R.6 W., W.M.

James W. Byron

FRED M. DARBY COUNTY SURVEYOR
SURVEYED FEB. 8, 1962 BY
JAMES W. BYRON - DEPUTY SCALE 1" = 100'
SURVEYED FOR TED POST

COUNTY SURVEYORS FILE DATA
DO NOT REMOVE FROM OFFICE