

COUNTY SURVEYOR DO NOT REMOVE FROM OFFICE

LOT 8 UMPQUA PARK ADDITION TO ROSEBURG SEC. 23 T 27 S R 6 W W.M.

Surveyed for Tommy Kimbrell

Scale 1" = 60'

Survey by Don Garrett

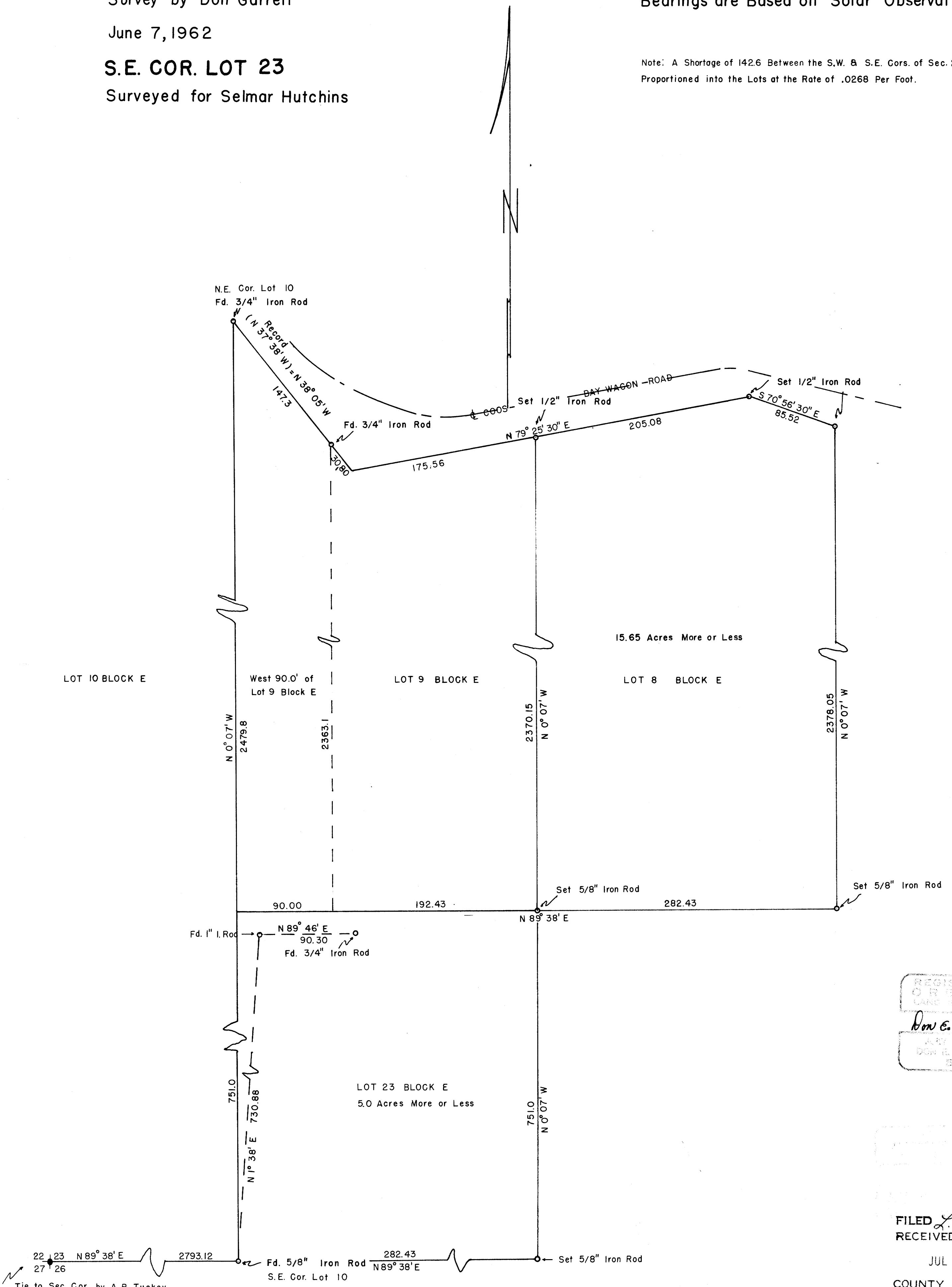
Bearings are Based on Solar Observations

June 7, 1962

S.E. COR. LOT 23

Surveyed for Selmar Hutchins

Note: A Shortage of 142.6 Between the S.W. & S.E. Cors. of Sec. 23 is Proportioned into the Lots at the Rate of .0268 Per Foot.



LOT 10 BLOCK E

West 90.0' of Lot 9 Block E

LOT 9 BLOCK E

15.65 Acres More or Less

LOT 8 BLOCK E

LOT 23 BLOCK E
5.0 Acres More or Less

REGISTERED
OREGON
LAND SURVEYOR
Don E. Garrett
JULY 11 1961
DON E. GARRETT
1544

FILED RECEIVED

JUL 3 1962

COUNTY SURVEYOR
DOUGLAS COUNTY, ORE.

Tie to Sec. Cor. by A.R. Tuckey
C.S. File M1/53