

EIFERT ESTATE

SECTION 14, T27S, R4W, W.M. DOUGLAS CO., OREGON

West 1064.4'

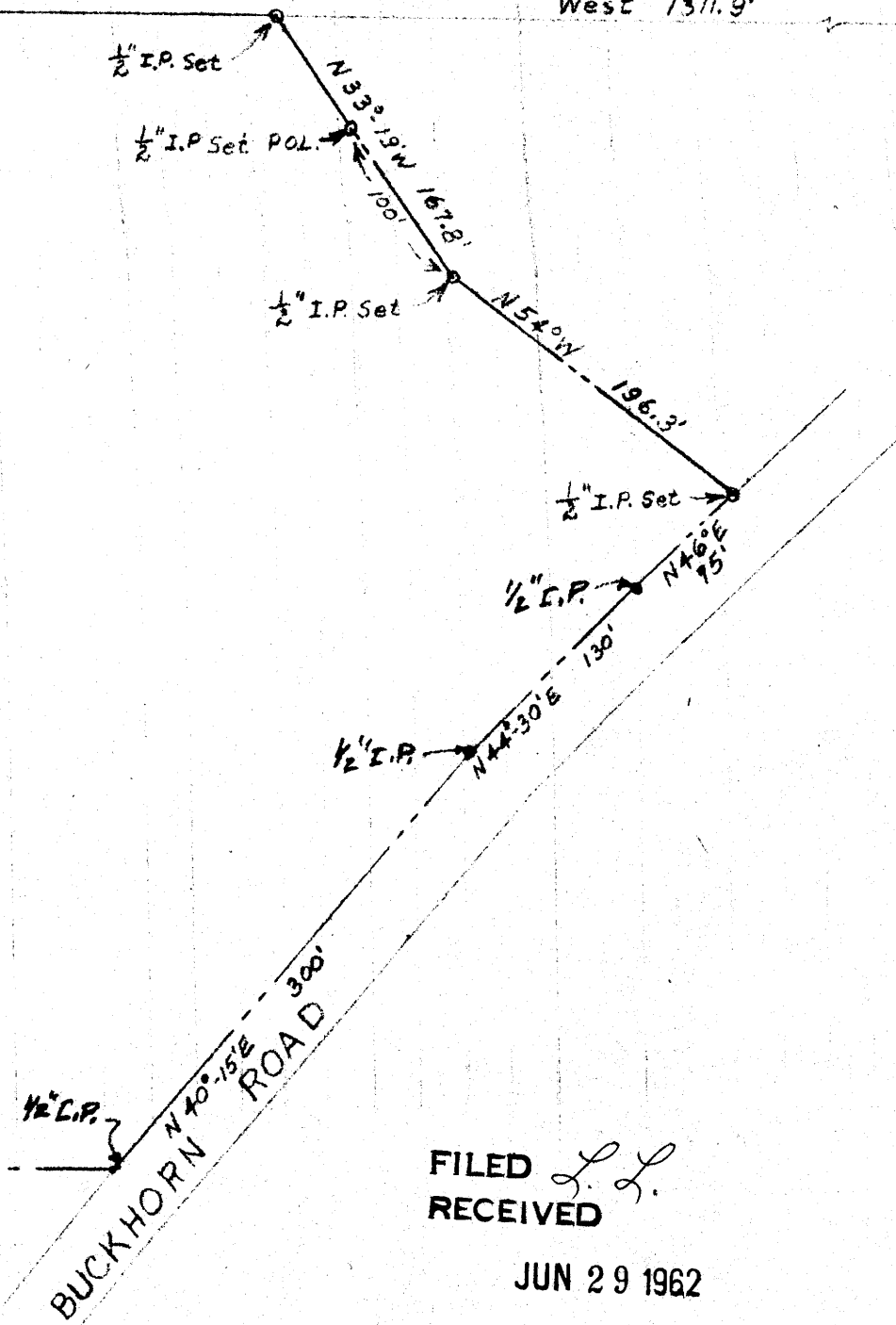
West 1311.9'

11/12
14/13

South 632.7'

WONDA CHAPMAN OLLIVER
16.90 Ac.

East 976.5'

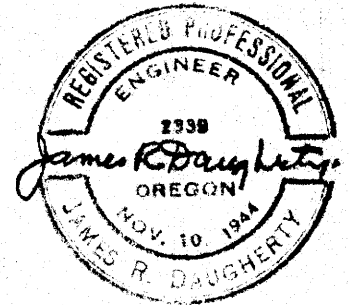


FILED *L.L.*
RECEIVED

JUN 29 1962

COUNTY SURVEYOR
DOUGLAS COUNTY, ORE.

JAMES R. DAUGHERTY
CIVIL-SANITARY ENGINEER
WINSTON, OREGON



COUNTY SURVEYORS FILE DATA
DO NOT REMOVE FROM OFFICE

Scale 1"=100'
May 21, 1962

FOR W. OLLIVER

NEW
T&S

MAP FILE M 23 4 77