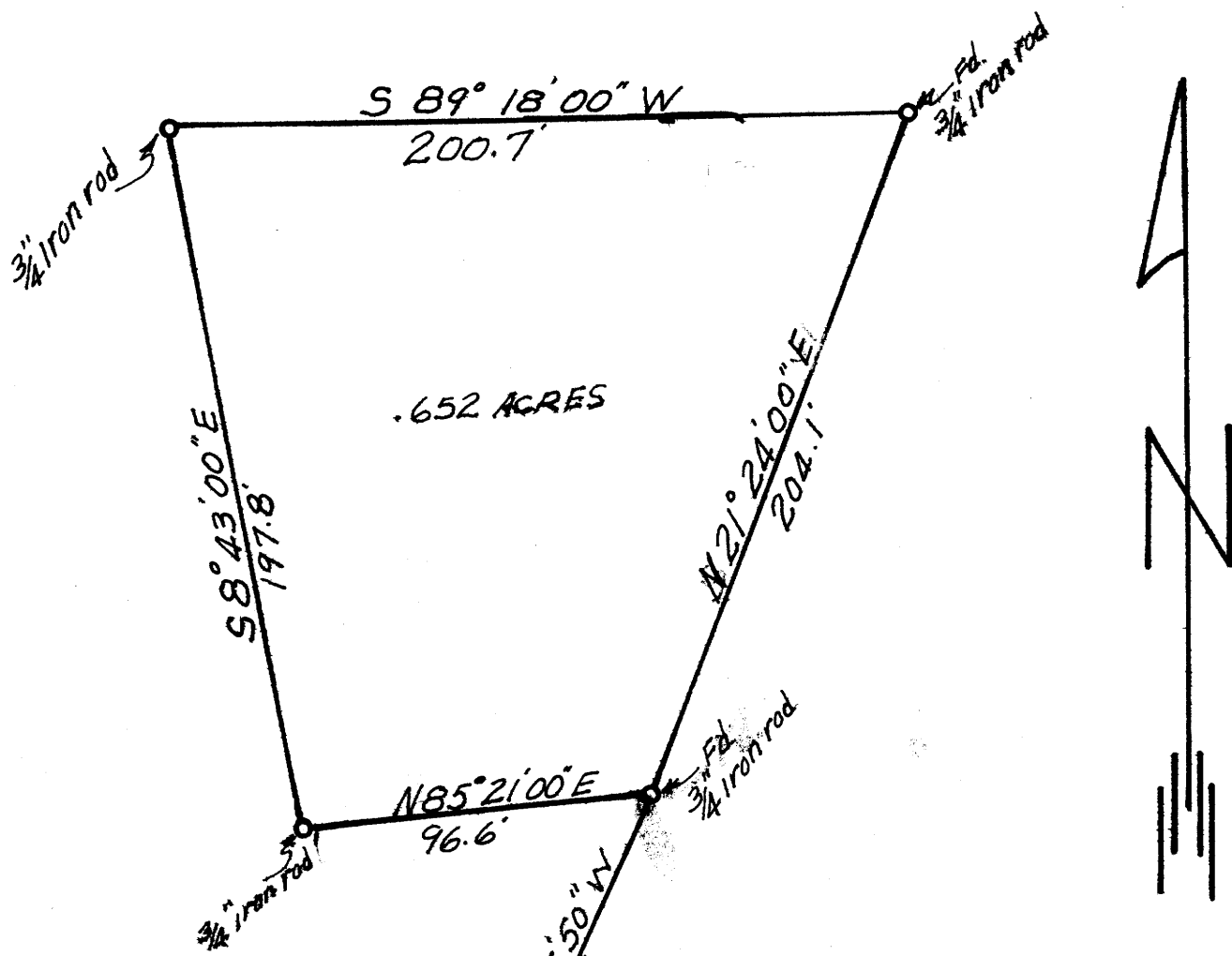


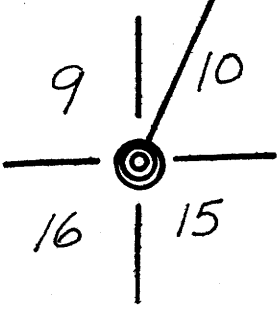
COUNTY SURVEYORS FILE DATA
DO NOT REMOVE FROM OFFICE

SURVEY FOR EARL ERICKSON

SEC. 10 - T27S R6W W.M. DOUGLAS CO., ORE.
JAN. 1962 SCALE 1" = 50'



NOTE: Base bearing of $S 89^{\circ} 18' 00'' W$
based on prior survey by
Percy C. ARMSTRONG on file in
the COUNTY SURVEYOR'S OFFICE.
See C.S. FILE 42/39



FILED
RECEIVED
FEB 6 1962
COUNTY SURVEYOR
DOUGLAS COUNTY, ORE.

REGISTERED
OREGON
LAND SURVEYOR
Wm. B. Paulin
JULY 14, 1961
WM. B. PAULIN
552