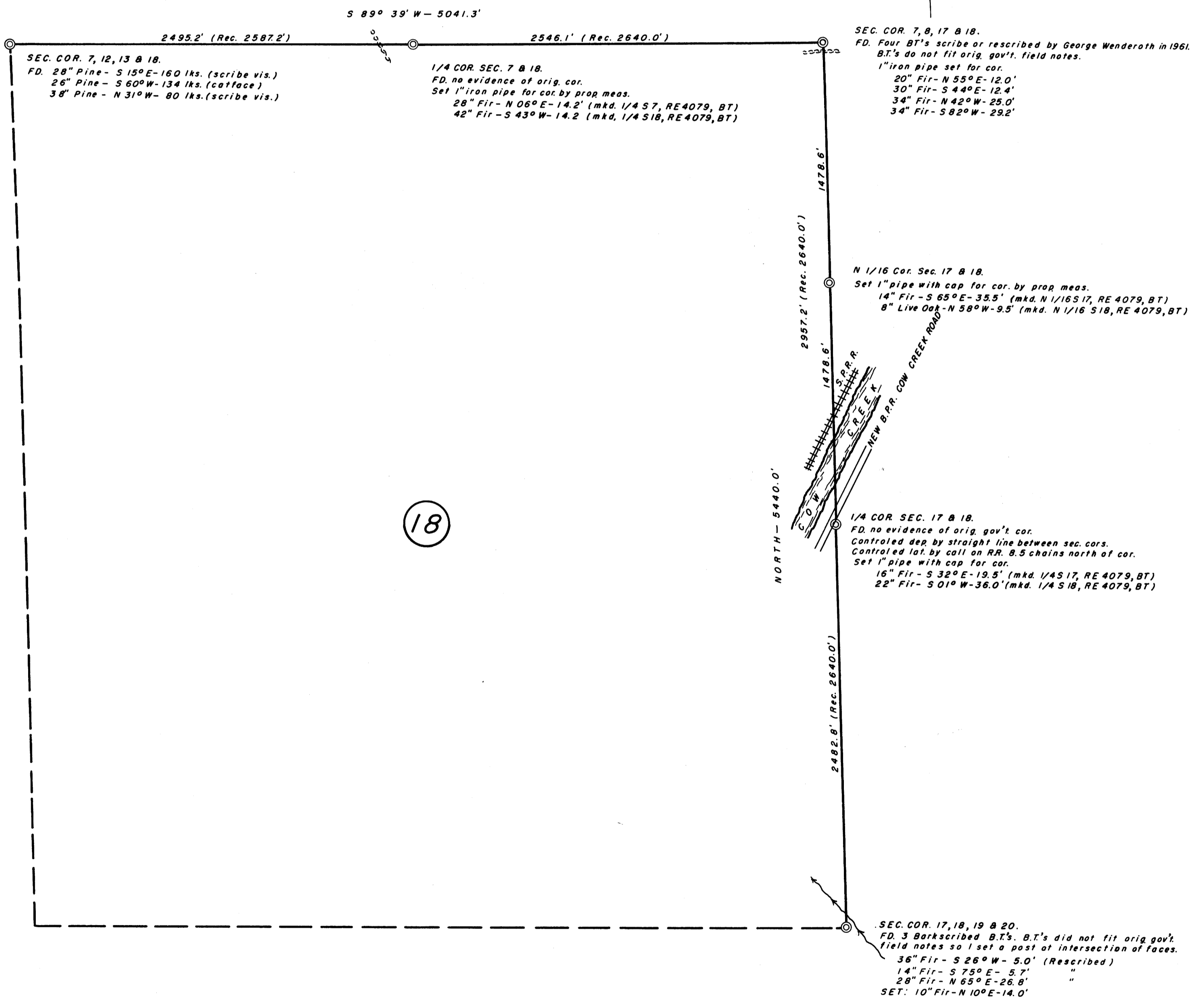
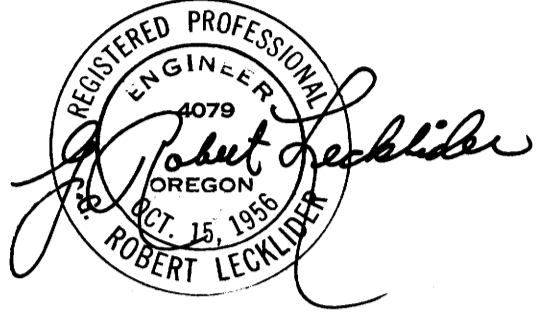


SURVEY OF SECTION 18, T31 S, R7 W, W.M.

SURVEYED FOR: C & D LUMBER CO.
SURVEYED BY: G. R. LECKLIDER-ENG'R.

JUNE, 1962
SCALE: 1" = 500'



FILED *L.L.*
RECEIVED
JUN 13 1962
COUNTY SURVEYOR
DOUGLAS COUNTY, ORE.