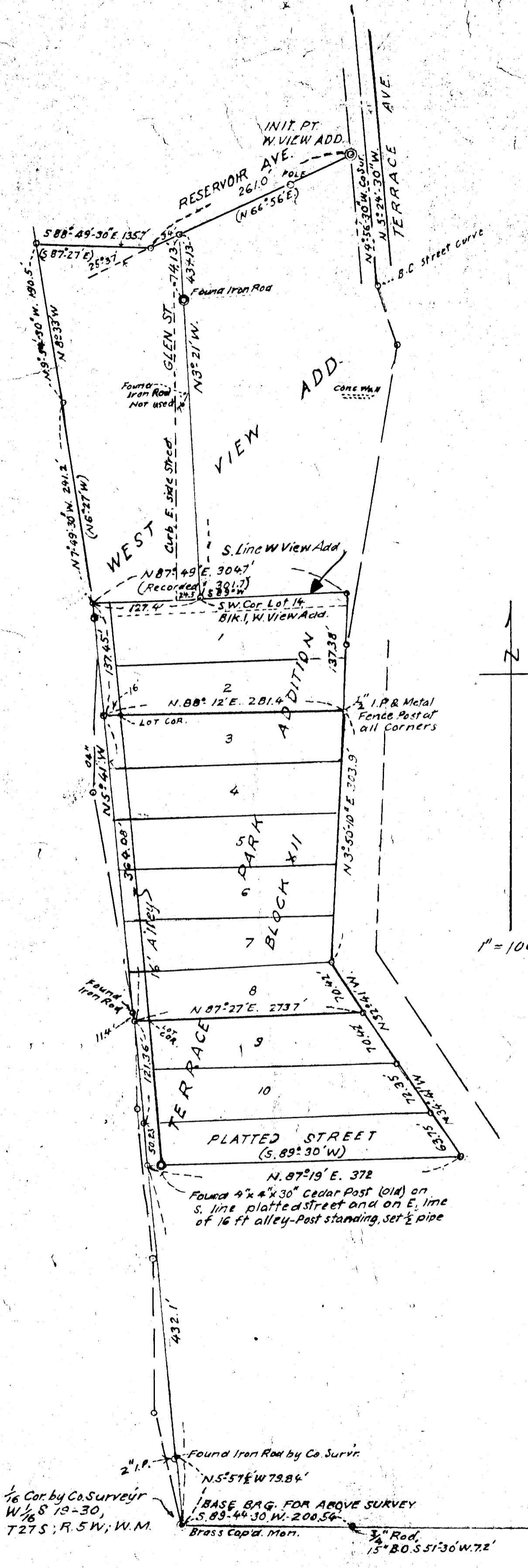


M 23-61



THIS COPY MADE FROM  
 A XEROX 2510  
 DATE July 26, 89

FILED *L.L.*  
 RECEIVED  
 MAY 25 1962  
 COUNTY SURVEYOR  
 DOUGLAS COUNTY, ORE.

COUNTY SURVEYORS  
 (DO NOT REMOVE FROM OFFICE)

FRED SOHN  
 LOTS 3 TO 8 INCL, BLOCK 12,  
 TERRACE PARK ADDITION TO  
 ROSEBURG, DOUGLAS COUNTY, ORE,  
 SEC 19, T.27S, R.5W, WILMER.  
 1962 *Arthur Johnson* 1" = 100 FT.

M 23-61