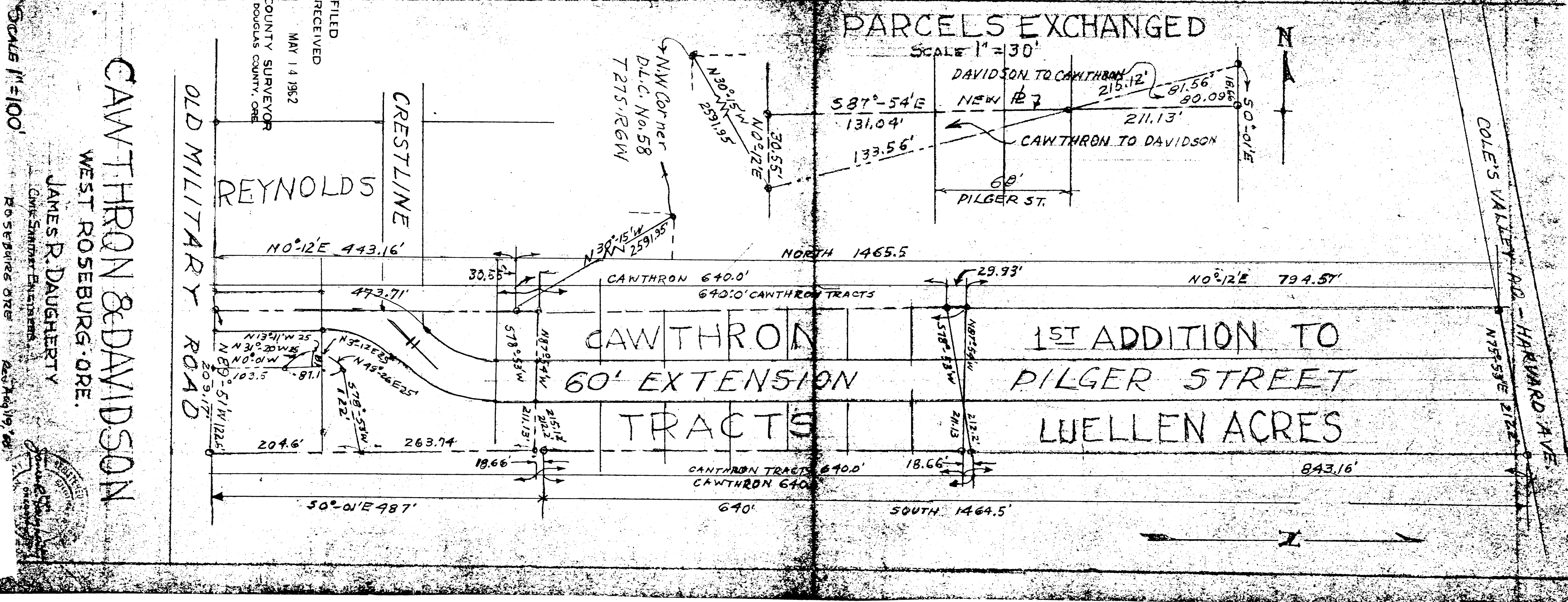
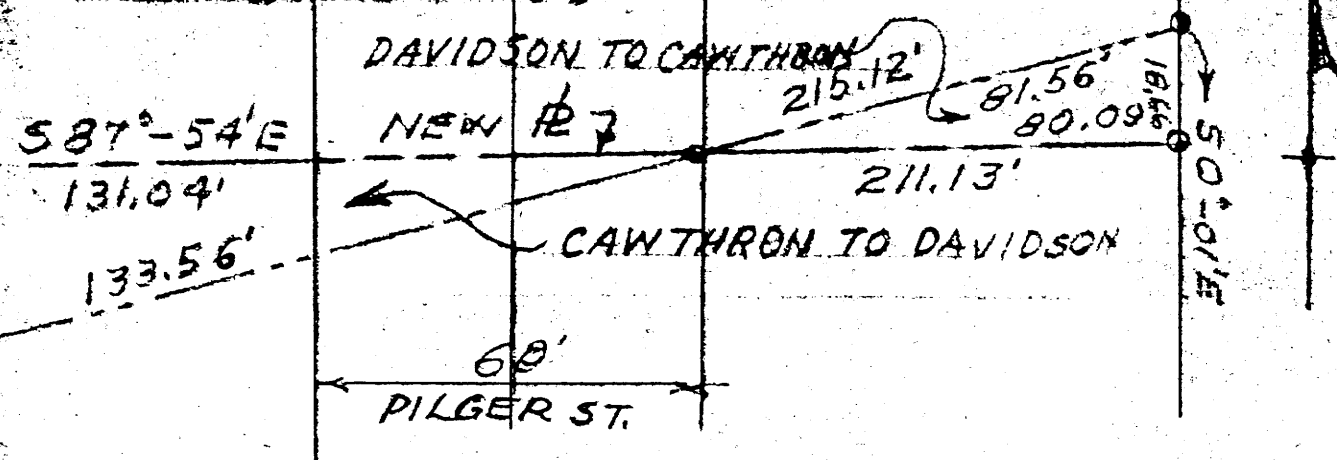


M 23-57

COUNTY SURVEYORS FILE DATA
DO NOT REMOVE FROM OFFICE

PARCELS EXCHANGED

SCALE 1" = 30'



FILED
RECEIVED
MAY 14 1962
COUNTY SURVEYOR
DOUGLAS COUNTY, ORE.

CAWTHRON & DAVIDSON
WEST ROSEBURG, ORE.
JAMES R. DAUGHERTY
CIVIL SURVEYOR-ENGINEER
ROSEBURG, ORE.

SCALE 1" = 100'

THIS COPY MADE FROM
A XEROX 2510
DATE July 26, 89

M 23-57