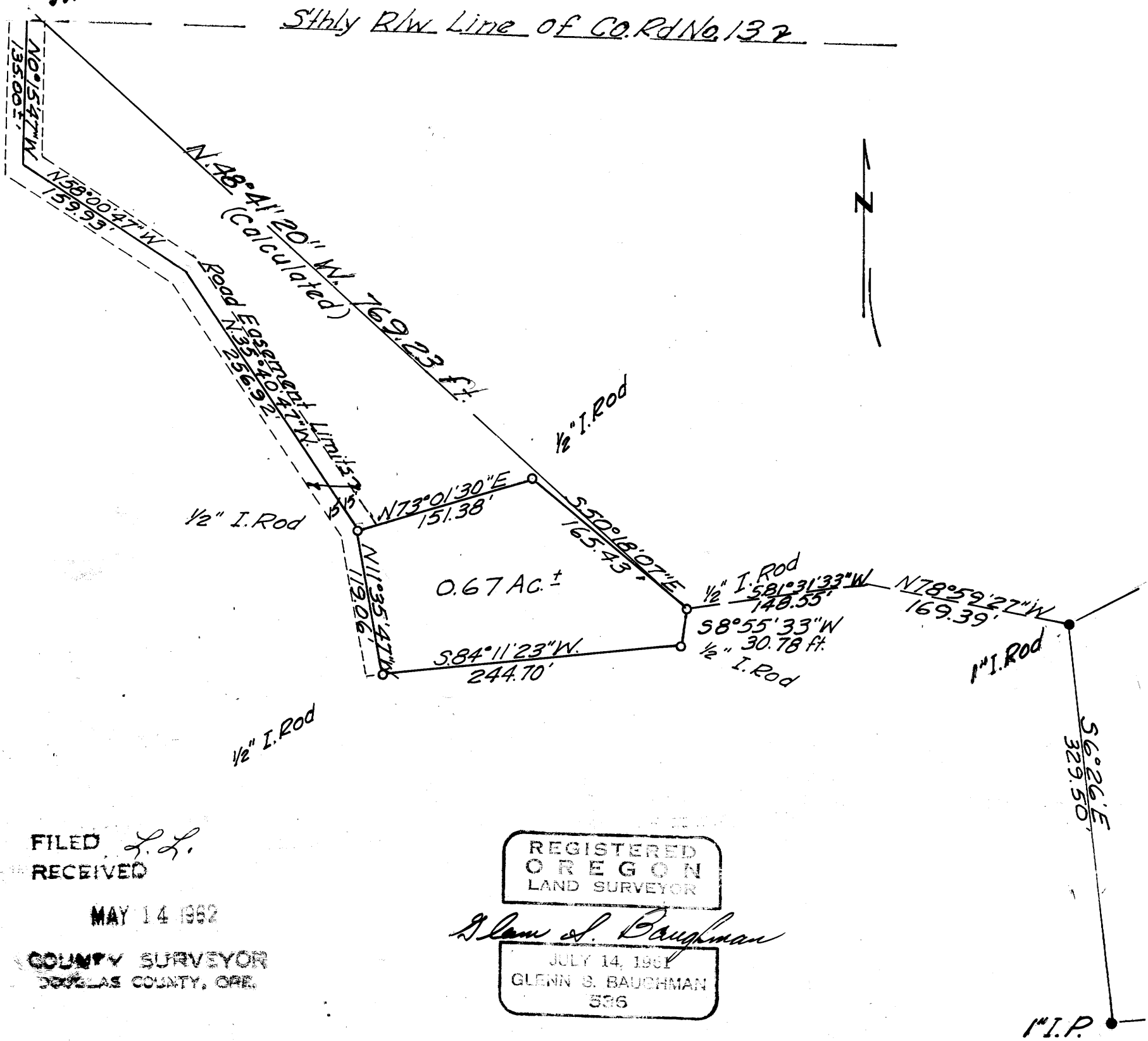


SURVEY FOR PROPERTY DESCRIPTION
WM. MCKINNEY D.L.C. No. 50 T.27S., R.6W. W.M.

Surveyed For Pete Veenstra
 ○ denotes monuments
 ● denotes monuments found

COUNTY SURVEYORS FILE DATA
DO NOT REMOVE FROM OFFICE

N.W. Ext. "L" Corner
 Wm. McKinney D.L.C. No. 50



FILED L.L.
 RECEIVED

MAY 14 1962

COUNTY SURVEYOR
 JOSEPHAS COUNTY, ORE.

REGISTERED
 OREGON
 LAND SURVEYOR

Glenn S. Baughman

JULY 14, 1961
 GLENN S. BAUGHMAN
 536

Scale 1"=100'
 Date, October 1961
 Base of Bearings - Property Description Vol. 196 Pg. 586

MAP FILE M 23 T 56