

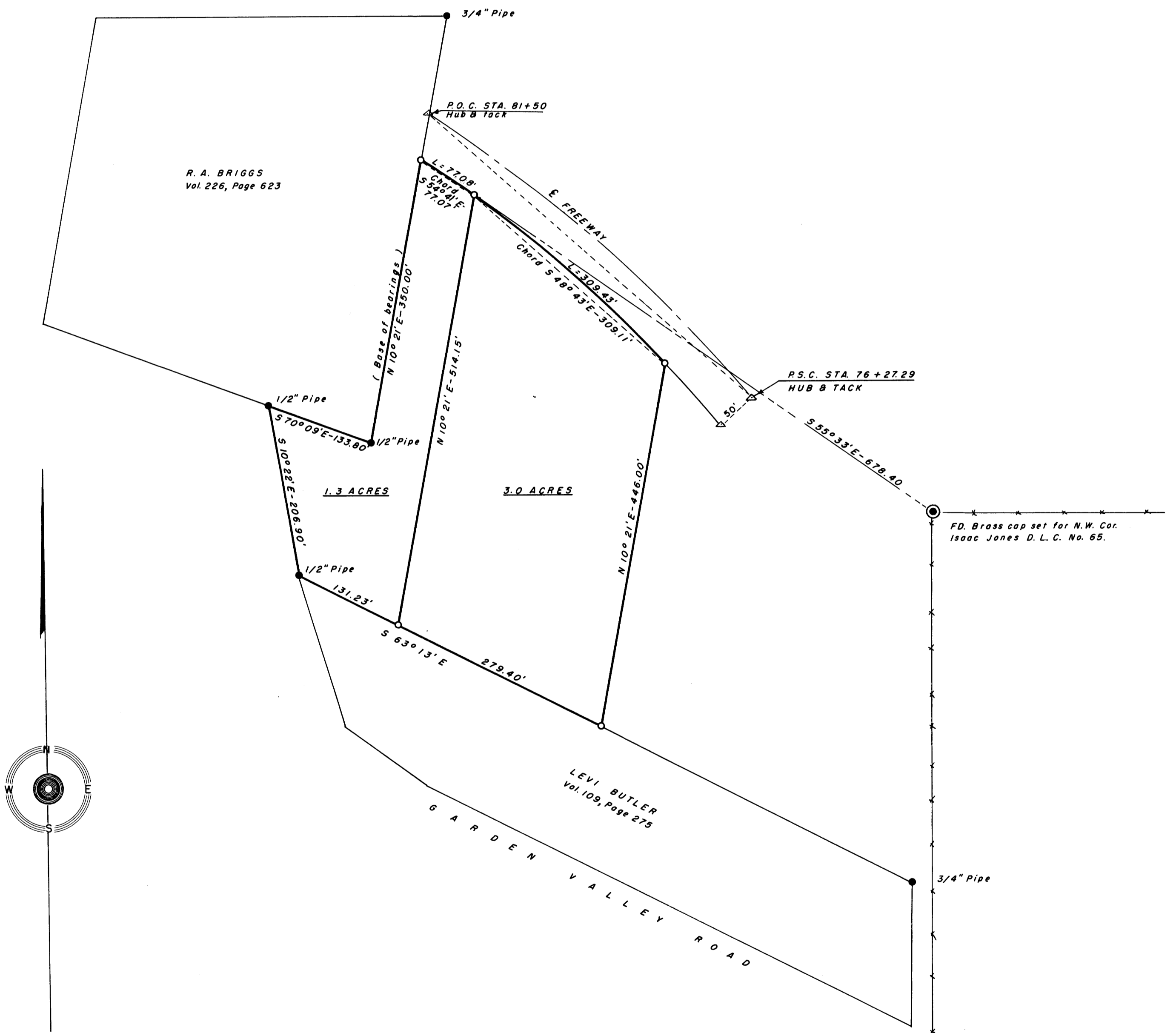
COUNTY SURVEYORS FILE DATA  
DO NOT REMOVE FROM OFFICE

# SURVEY IN SECTION II, T 27 S, R 6 W, W.M.

SURVEYED FOR: DARLEY WARE  
SURVEYED BY: G. R. LECKLIDER-ENG'R.

MAY, 1962  
SCALE: 1"=100'

NOTE: ● DENOTES MONUMENTS FOUND.  
○ DENOTES 3/4" X 36" IRON RODS SET.  
REFER TO C.S. FILE 41-141.



FILED *L.L.*  
RECEIVED  
MAY 14 1962  
COUNTY SURVEYOR  
DOUGLAS COUNTY, ORE.

REGISTERED PROFESSIONAL  
ENGINEER  
1979  
*Robert Lecklider*  
OREGON  
OCT. 15, 1956  
ROBERT LECKLIDER