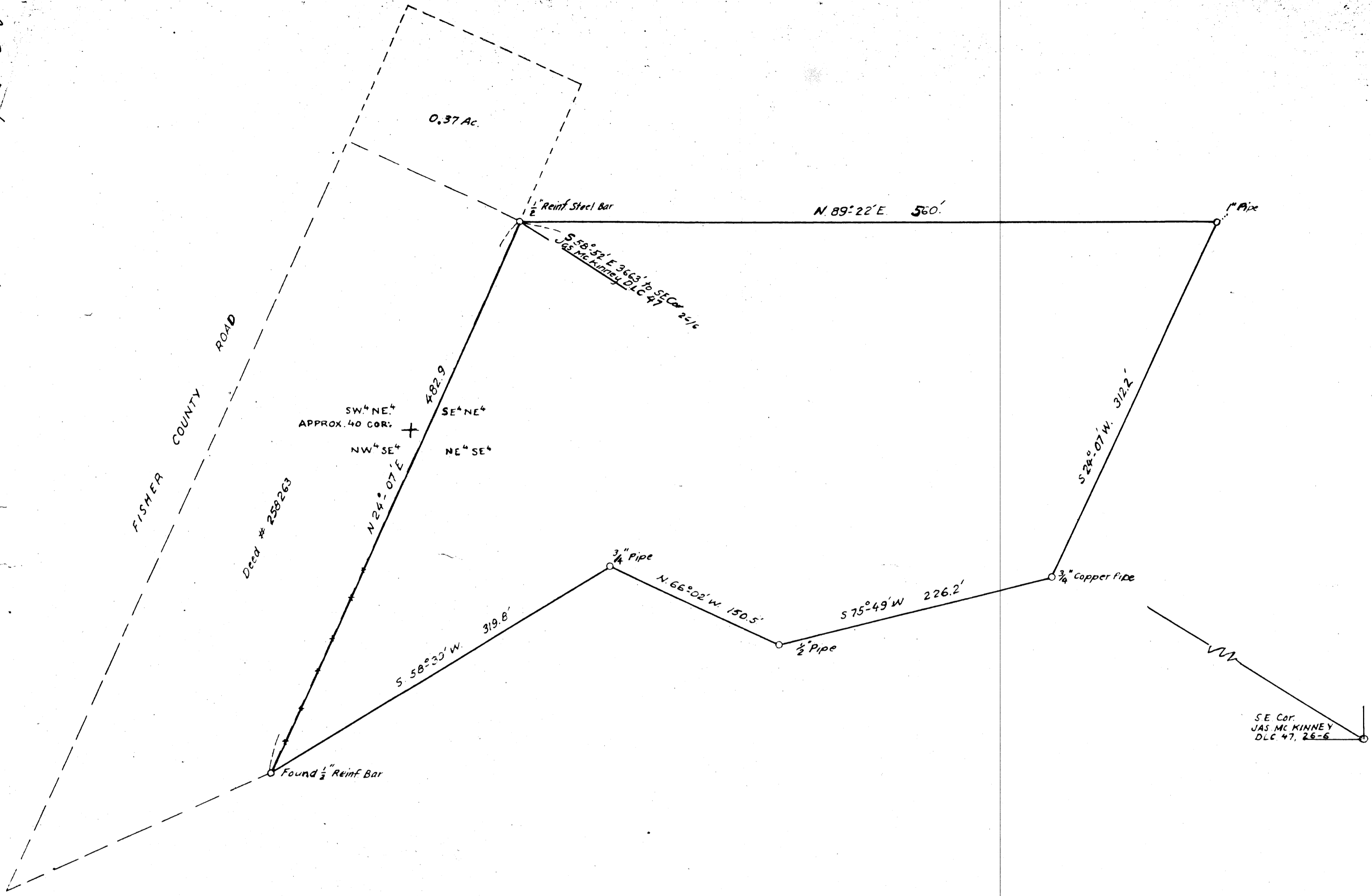


O.S. 51/236
M23-51

O.S. 51/236
M23-51



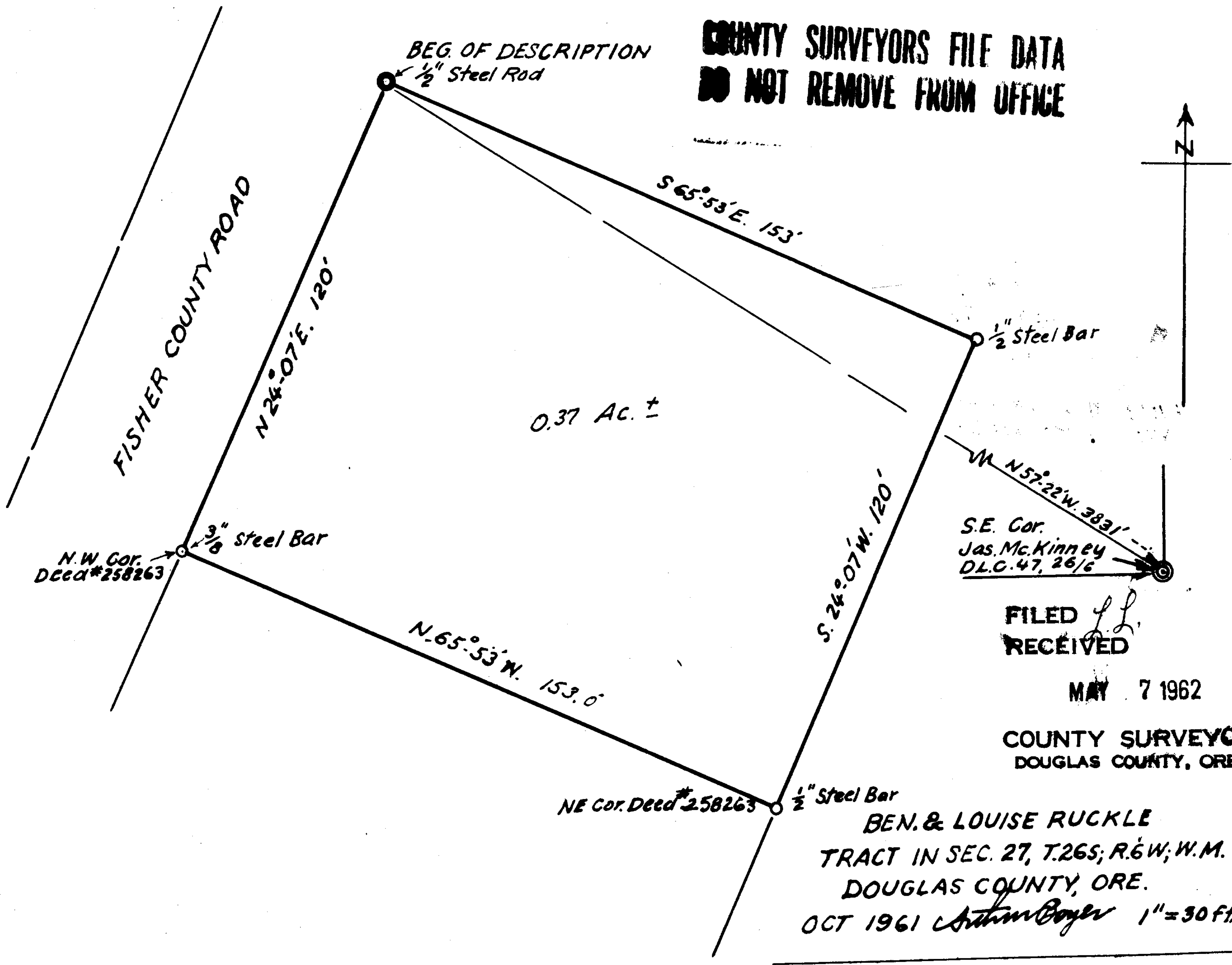
FILED
RECEIVED
MAY 7 1962
COUNTY SURVEYOR
DOUGLAS COUNTY, ORE.

THIS COPY MADE FROM
A XEROX 2510
DATE July 26, 89

BEN & LOUISE RUCKLE
TO LARRY & JUDY ALDRED,
IN JAS. MC KINNEY D.L.C. 47,
IN SEC. 27, T26S, R.6W, W.M.,
DOUGLAS COUNTY, ORE.
OCT. 1961



COUNTY SURVEYORS FILE DATA
DO NOT REMOVE FROM OFFICE



FILED *J.L.*
RECEIVED

MAY 7 1962

COUNTY SURVEYOR
DOUGLAS COUNTY, ORE.

BEN. & LOUISE RUCKLE
TRACT IN SEC. 27, T.26S; R.6W; W.M.
DOUGLAS COUNTY, ORE.
OCT 1961 *Arthur Boyer* 1" = 30 ft.

NE Cor. Deed # 258263 $\frac{1}{2}$ " Steel Bar

N.W. Cor. Deed # 258263 $\frac{3}{8}$ " Steel Bar

BEG. OF DESCRIPTION
 $\frac{1}{2}$ " Steel Rod