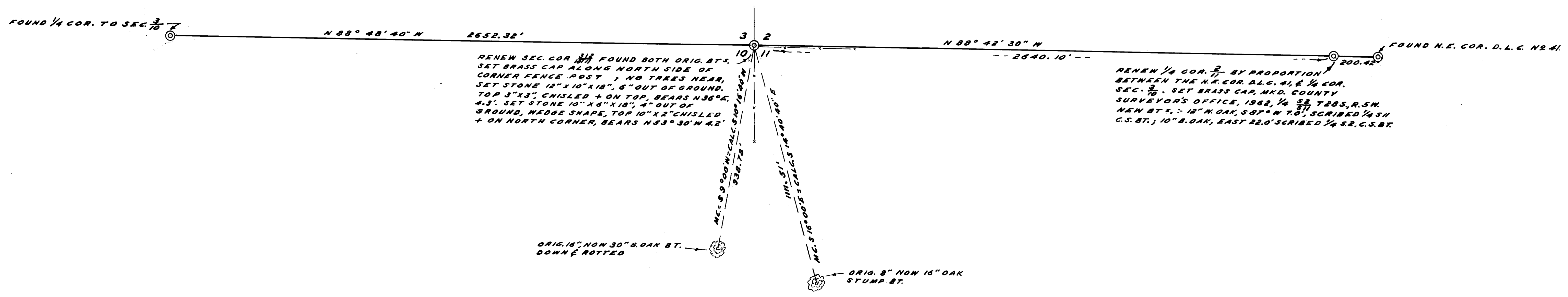


NOTE: BEARINGS ARE MAGNETIC.  
WITH MAGNETIC VAR. 20°30'



RENEW SEC. COR. ~~3/4~~ FOUND BOTH ORIG. BT'S.  
SET BRASS CAP ALONG NORTH SIDE OF  
CORNER FENCE POST; NO TREES NEAR,  
SET STONE 12" X 10" X 18", 6" OUT OF GROUND,  
TOP 3" X 3", CHISELED + ON TOP, BEARS N36° E,  
4.3'. SET STONE 10" X 8" X 18", 4" OUT OF  
GROUND, WEDGE SHAPE, TOP 10" X 2" CHISELED  
+ ON NORTH CORNER, BEARS N53° 30' W 4.2'

RENEW 1/4 COR. ~~7/1~~ BY PROPORTION  
BETWEEN THE N.E. COR. D.L.C. 41 & 1/4 COR.  
SEC. ~~7/10~~. SET BRASS CAP, MKD. COUNTY  
SURVEYOR'S OFFICE, 1962, 1/4 ~~52~~ T28S, R.5W.  
NEW BT'S. - 12" N. OAK, 5 BT' N 7.8', SCRIBED 1/4 S.W.  
C.S. BT.; 10" B. OAK, EAST 22.0' SCRIBED 1/4 S.2. C.S. BT.

COUNTY SURVEYOR'S OFFICE  
DOUGLAS COUNTY, OREGON

SURVEY TO RENEW SEC. CORNER  
SECTION 10 & 11 T.28 S. R. 5 W. W.M.

*James W. Byron*  
COUNTY SURVEYOR

FRED M. DARBY COUNTY SURVEYOR  
SURVEYED JAN. 29, 1962 BY  
JAMES W. BYRON - DEPUTY SCALE 1" = 300'  
SURVEYED FOR DOUGLAS COUNTY

COUNTY SURVEYORS FILE DATA  
DO NOT REMOVE FROM OFFICE