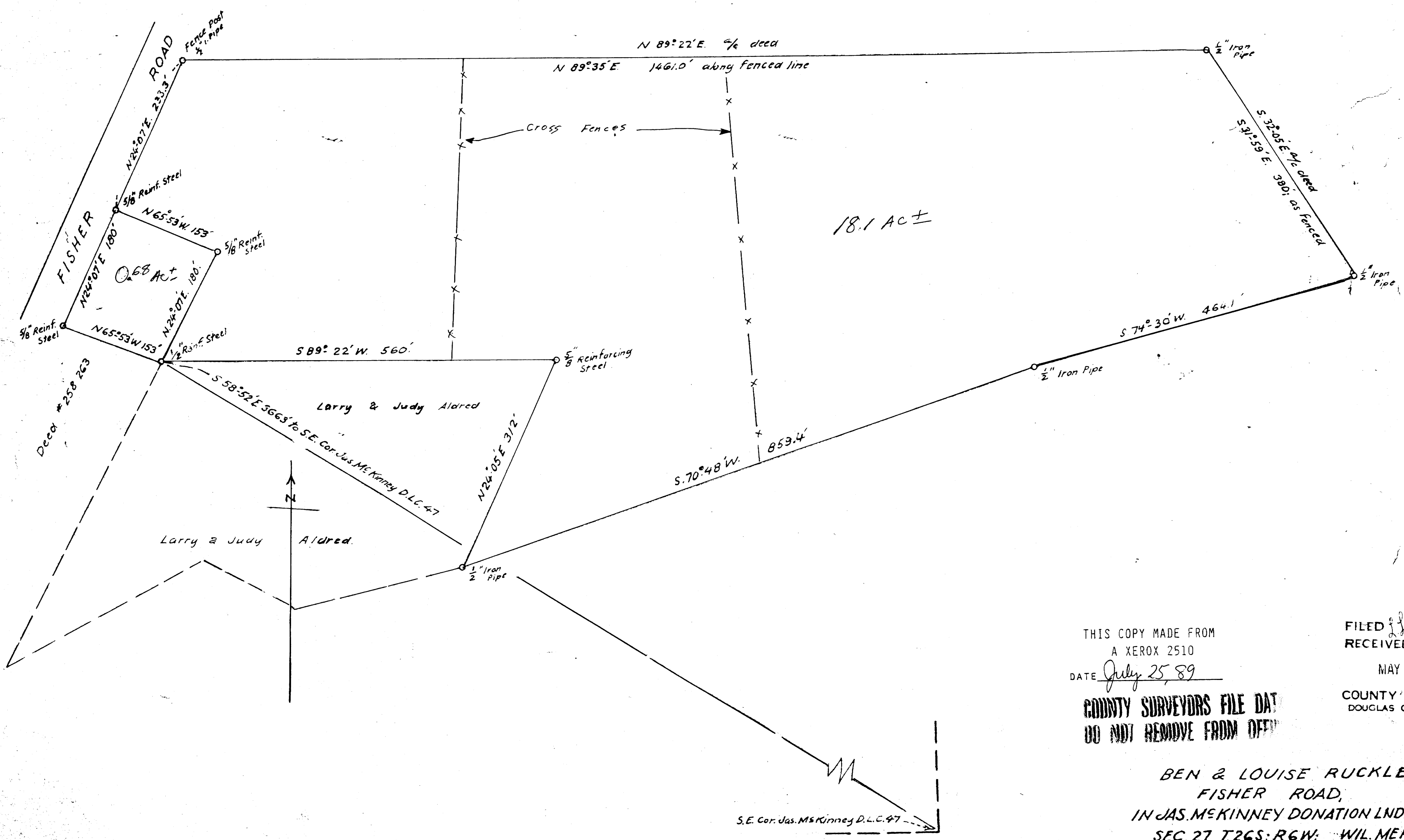


C.S. 51/236
M 23-48



THIS COPY MADE FROM
A XEROX 2510
DATE July 25, 89

FILED *ll*
RECEIVED

MAY 7 1962

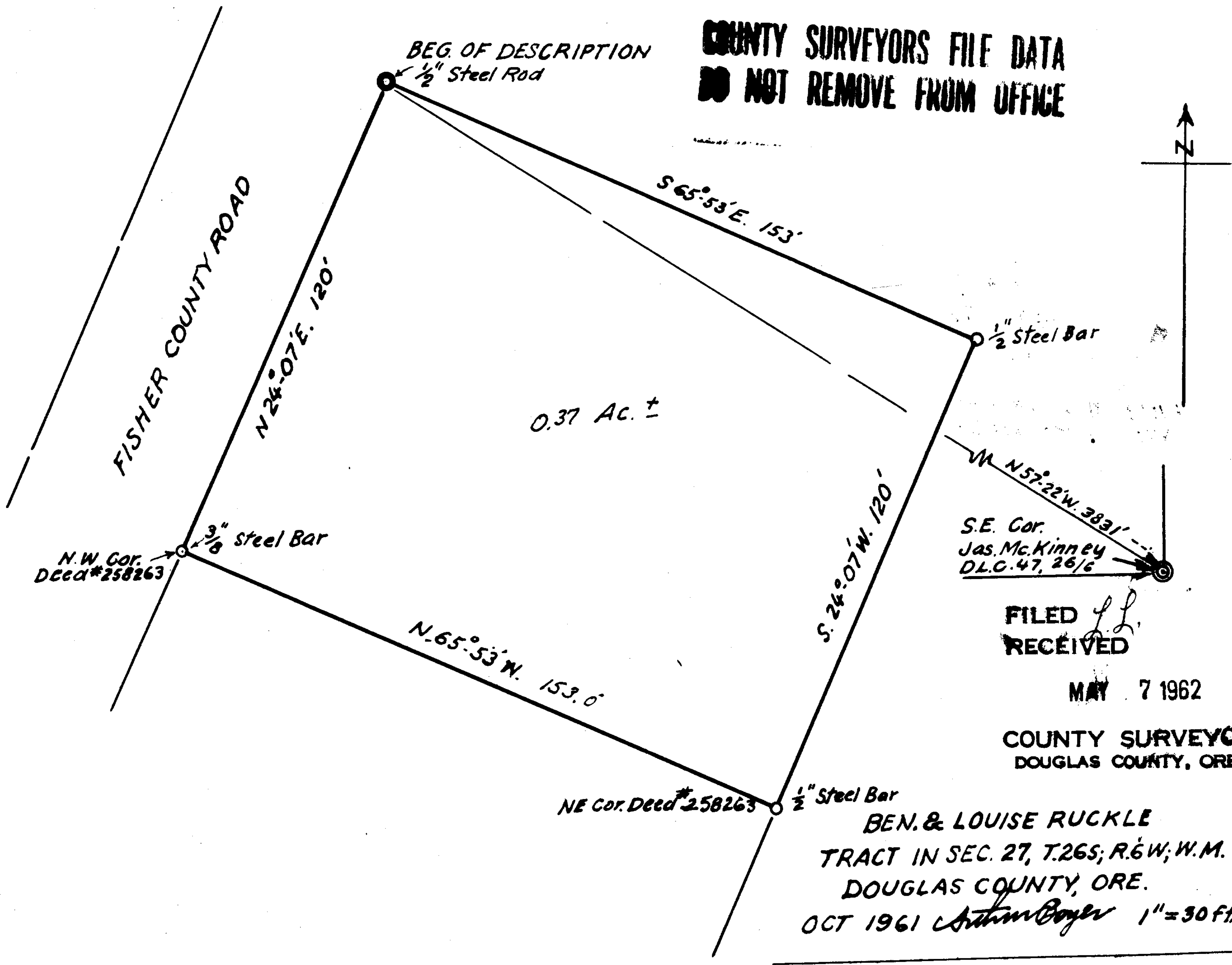
COUNTY SURVEYORS FILE DAT
DO NOT REMOVE FROM OFFICE

COUNTY SURVEYOR
DOUGLAS COUNTY, ORE.

BEN & LOUISE RUCKLE,
FISHER ROAD,
IN JAS. MCKINNEY DONATION LND. CLM. 47,
SEC. 27, T. 26S; R. 6W; WIL. MER.
DOUGLAS COUNTY, OREGON.
Feb. 1962 *Stan Boyer* 1" = 100 ft.

M 23-48

**COUNTY SURVEYORS FILE DATA
DO NOT REMOVE FROM OFFICE**



N.W. Cor. Deed #258263
3/8" Steel Bar

N. 65° 53' W. 153.0'

NE Cor. Deed #258263 1/2" Steel Bar

S.E. Cor. Jas. Mc. Kinney D.L.C. 47, 26/6

FILED *J.L.*
RECEIVED

MAY 7 1962

COUNTY SURVEYOR
DOUGLAS COUNTY, ORE.

BEN. & LOUISE RUCKLE
TRACT IN SEC. 27, T.26S; R.6W; W.M.
DOUGLAS COUNTY, ORE.
OCT 1961 *Arthur Boyer* 1" = 30 ft.

C. S. File No. 51/2363