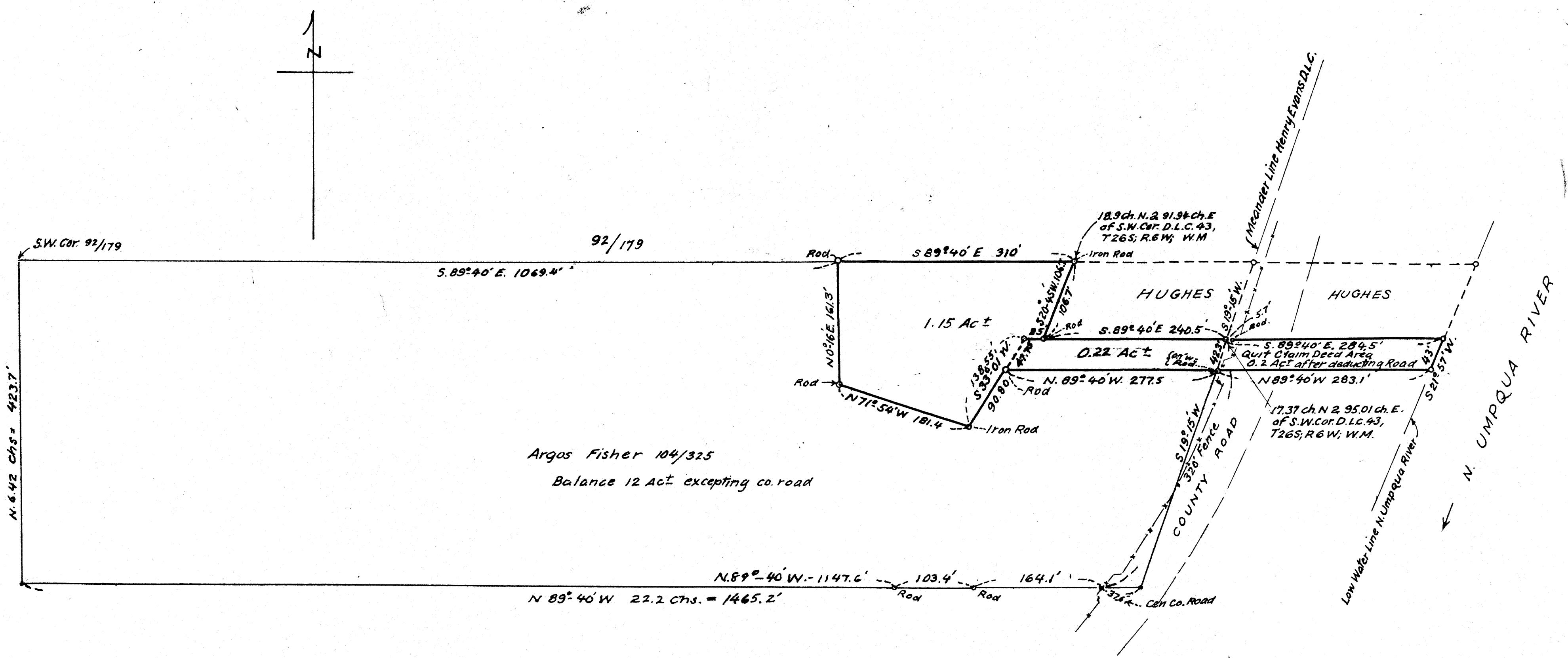


SEE ORIGIN TRAILING

SEE SAME NUMBER



FILED  
RECEIVED

MAY 8 1962

COUNTY SURVEYOR  
DOUGLAS COUNTY, ORE.

ARGOS FISHER PROPERTY  
 ON RIGHT OR N. BANK N. UMPQUA RIVER  
 IN HENRY EVANS DON. LND. CLM. 43,  
 SEC. 27, T26, S; R. 6 W; W. M; DOUGLAS COUNTY, ORE.  
 APR 1962  
*Arthur Jones* 1" = 100ft.  
 Reg. Engr., Ore Lic. 1581

COUNTY SURVEYORS FILE DATA  
DO NOT REMOVE FROM OFFICE