

AS NEARLY AS COULD BE DETERMINED WITHOUT AN ACTUAL RESURVEY, NO CHANGES HAVE BEEN MADE THAT WOULD AFFECT THE LOCATION OF THE IMPROVEMENTS AS SHOWN ON THE 5/20 OF LOT 1 - Block 19 - Town of Roseburg.

*A. R. Evans*  
 REG. PROF. ENGR.

SURVEY TO LOCATE IMPROVEMENTS  
 ON THE 5/2 OF LOT ONE

BLOCK 19, TOWN OF ROSEBURG, ORE.

FILED

RECEIVED

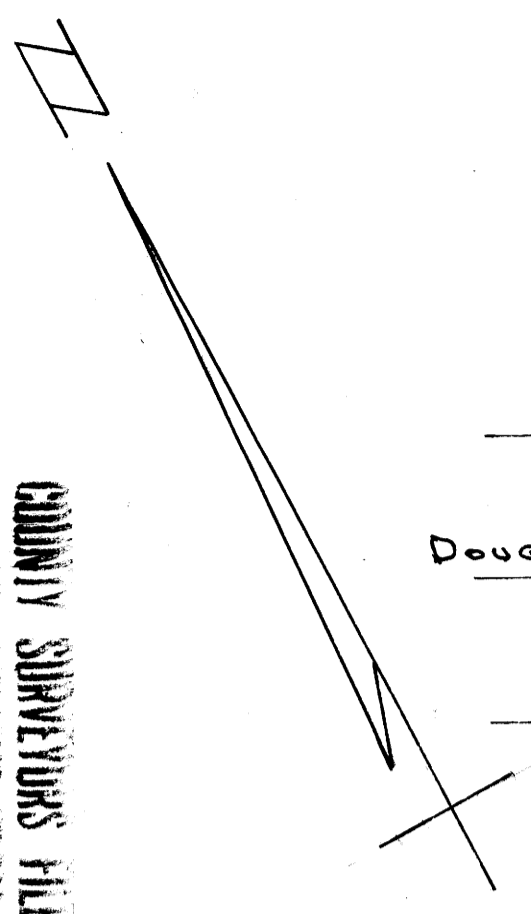
MAR 23 1954

COUNTY SURVEYOR  
 DOUGLAS COUNTY, ORE.

*A. R. Evans*

Grant & Evans, Engrs., Roseburg, Ore.  
 Surveyed Aug 1952, Scale 1" = 40'

COUNTY SURVEYORS FILE  
 DO NOT REMOVE FROM OFFICE



C S FILE 41/271

Map File M 23-46