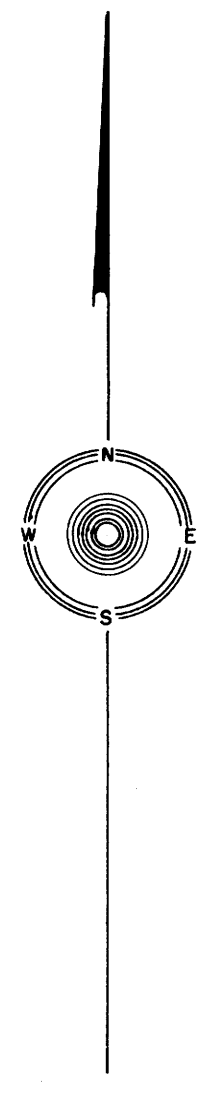
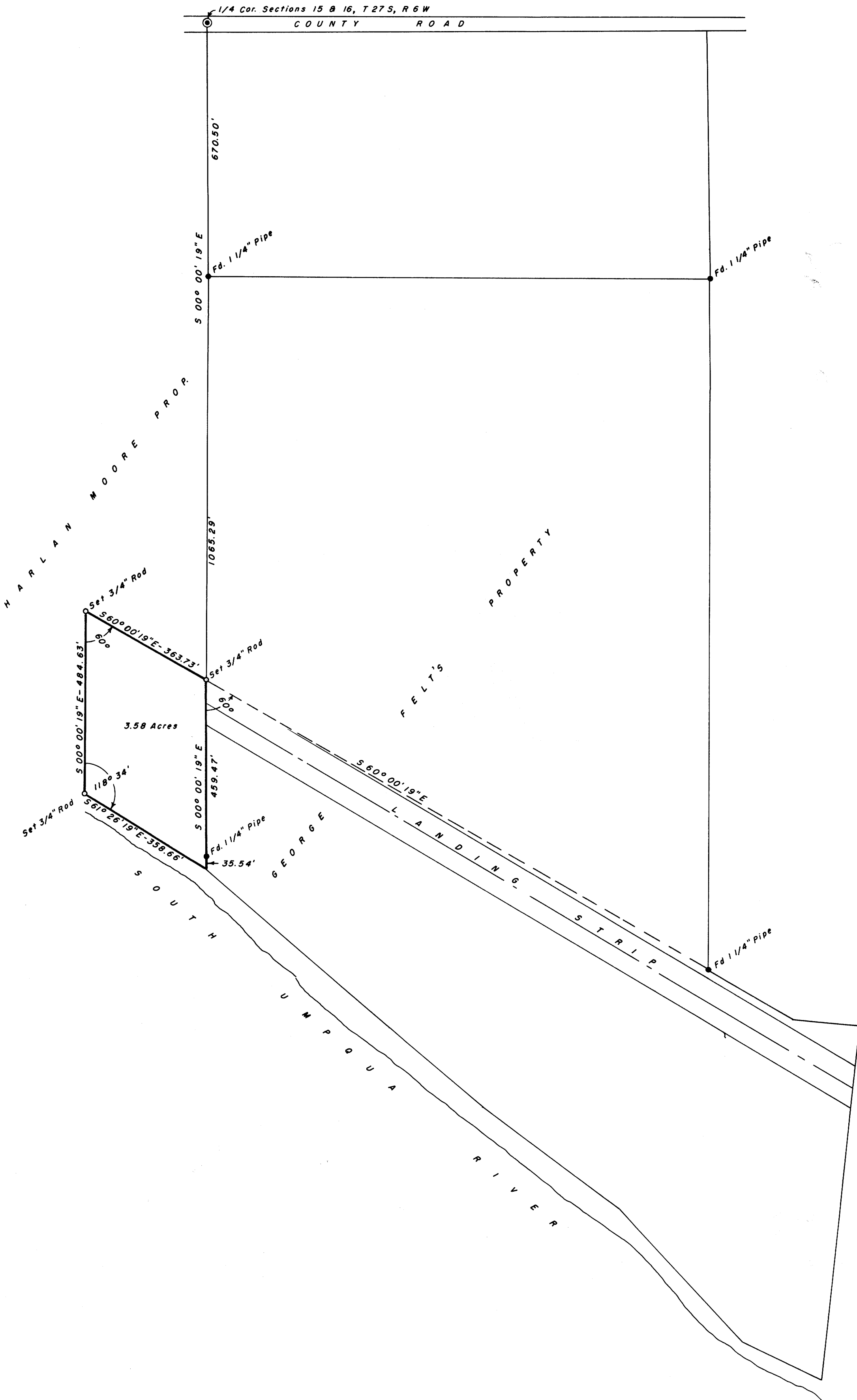


# SURVEY IN SECTIONS 15 & 16, T27S, R6W, WM.

SURVEYED FOR: HARLAN MOORE & GEORGE FELT  
SURVEYED BY: G. R. LECKLIDER-ENGINEER

APRIL, 1962  
SCALE: 1" = 200'

NOTE: SURVEY BASED ON SURVEY FOR GEORGE FELT BY E. S. WOODFORD.



FILED *L.L.*  
RECEIVED  
APR 30 1962  
COUNTY SURVEYOR  
DOUGLAS COUNTY, ORE.

REGISTERED PROFESSIONAL  
ENGINEER  
4079  
*Robert Lecklider*  
OREGON  
OCT. 15, 1958  
ROBERT LECKLIDER