

# SURVEY FOR DEED DESCRIPTION SECTIONS 29 & 32, T26S, R4W, W.M.

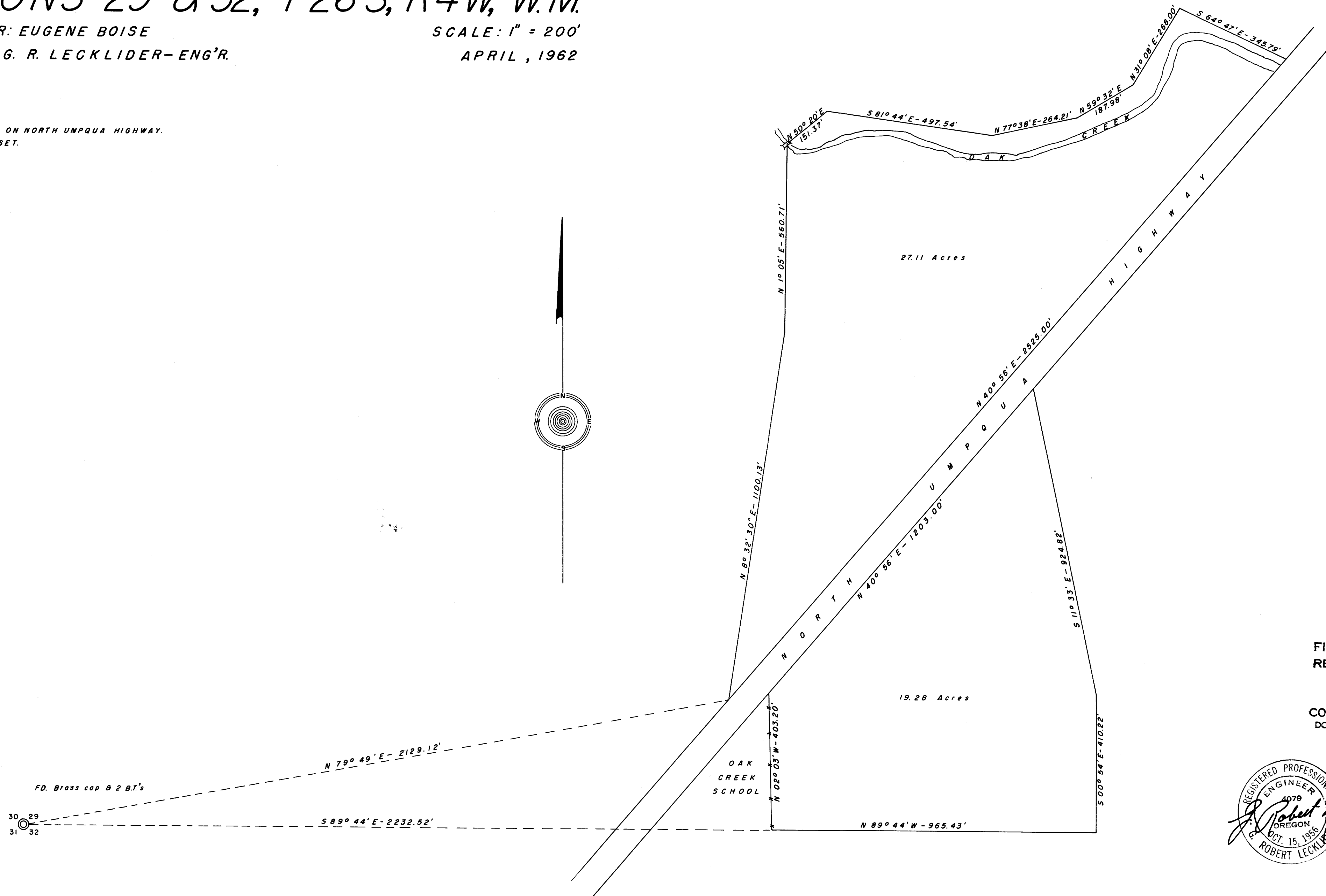
SURVEYED FOR: EUGENE BOISE

SURVEYED BY: G. R. LECKLIDER-ENG'R.

SCALE: 1" = 200'

APRIL, 1962

NOTE: BEARINGS BASED ON NORTH UMPQUA HIGHWAY.  
NO MONUMENTS SET.



FILED *L.L.*  
RECEIVED

APR 30 1962

COUNTY SURVEYOR  
DOUGLAS COUNTY, ORE.

