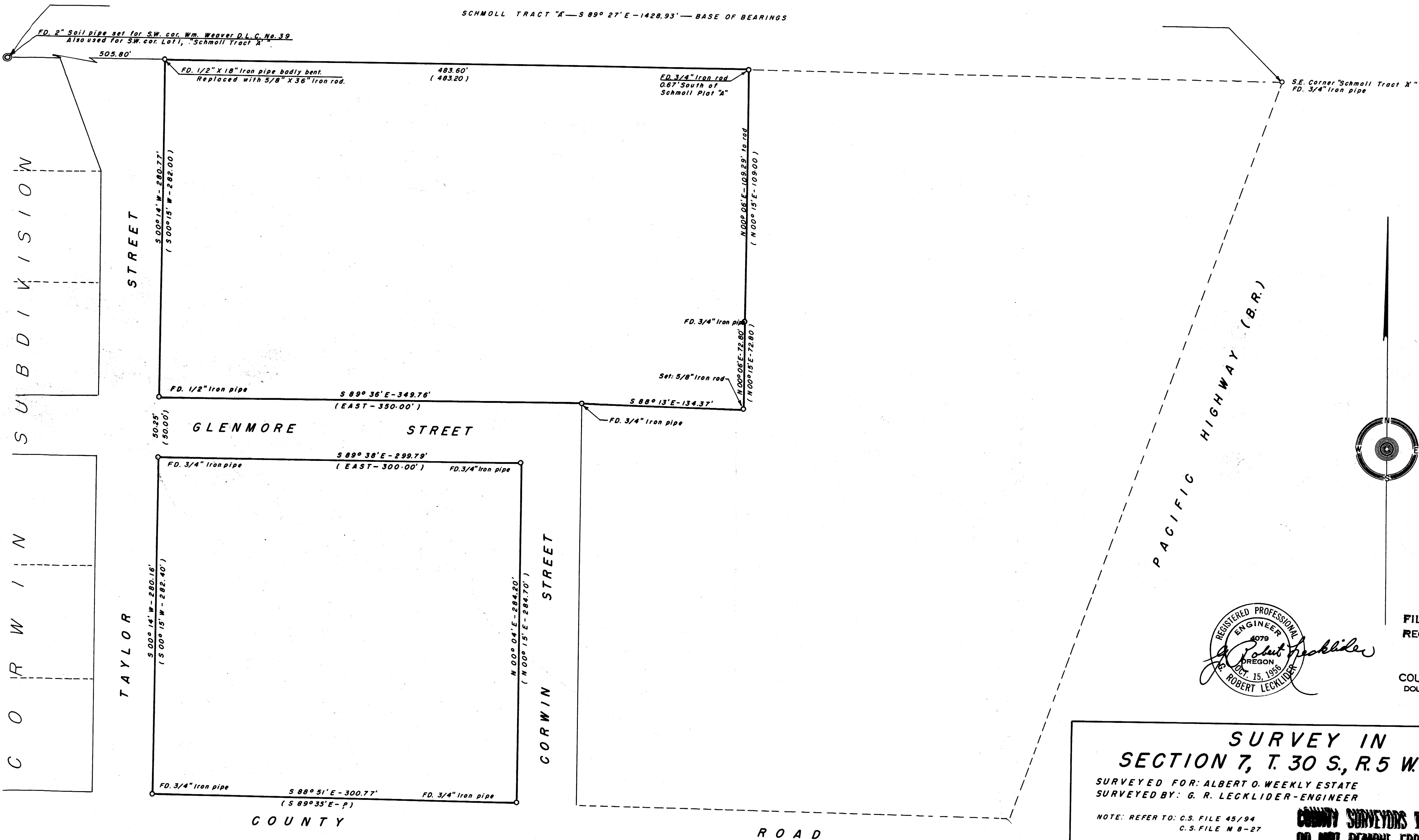


S C H M O L L T R A C T "A"

SCHMOLL TRACT "A" — S 89° 27' E — 1428.93' — BASE OF BEARINGS



M 23-36

MAP FILE M 23-36



FILED *R.L.*
RECEIVED
APR 10 1962
COUNTY SURVEYOR
DOUGLAS COUNTY, ORE.

SURVEY IN
SECTION 7, T. 30 S., R. 5 W. W.M.
SURVEYED FOR: ALBERT O. WEEKLY ESTATE
SURVEYED BY: G. R. LECKLIDER - ENGINEER
APRIL 3, 1962
SCALE: 1" = 50'
NOTE: REFER TO: C.S. FILE 45/94
C.S. FILE M 8-27
COUNTY SURVEYORS FILE DATA
DO NOT REMOVE FROM OFFICE