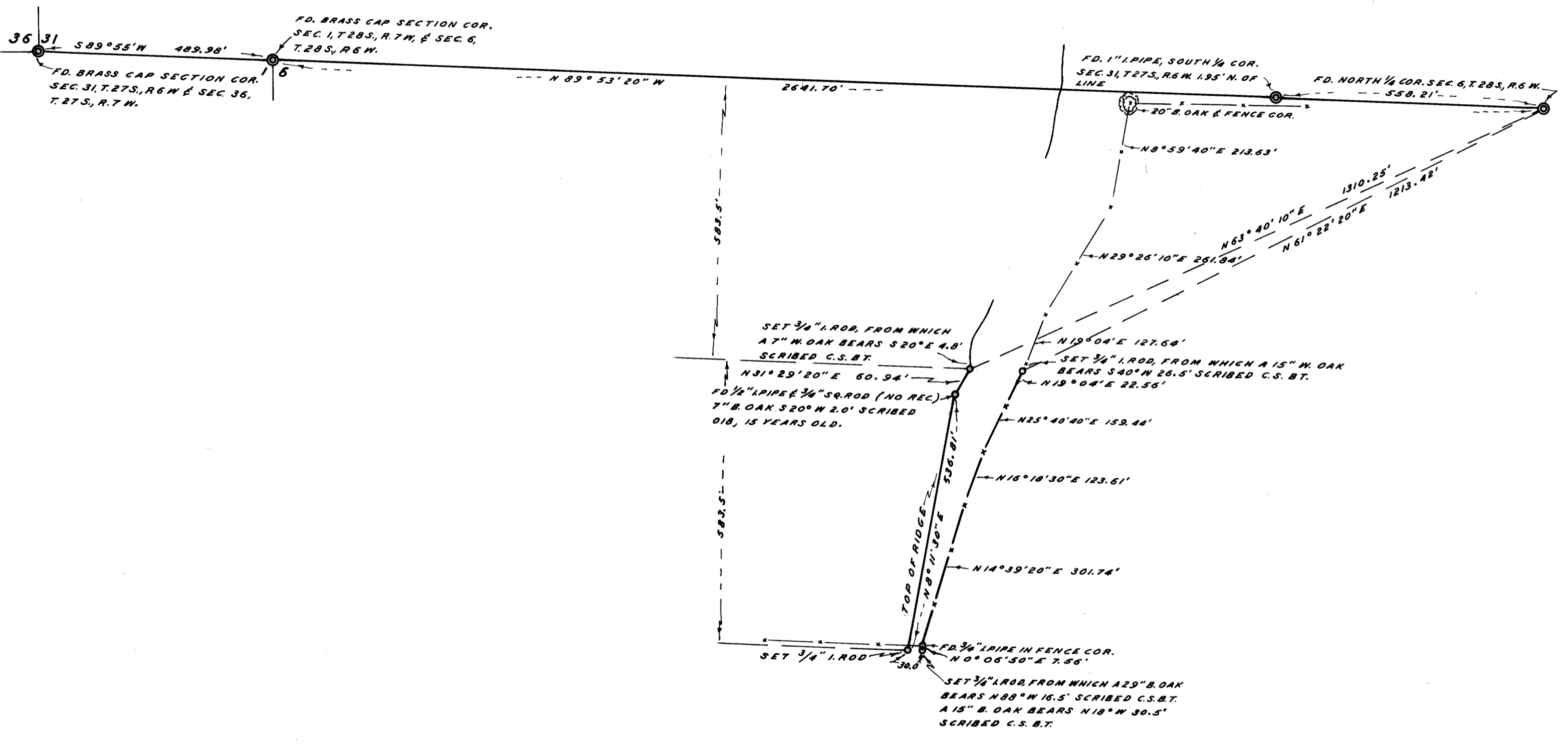


NOTE: BEARINGS BASED ON S 89° 55' W,
PER GOV. NOTES BETWEEN C.C.
SEC. 31 & 36 T27S, R6E 7W, & C.C. SEC.
6E, T28S, R.6E 7W.



COUNTY SURVEYOR'S OFFICE
DOUGLAS COUNTY, OREGON

SURVEY FOR DESCRIPTION OF LINES IN
SECTION 6, T28S., R.6 W., W.M.

FRED M. DARBY COUNTY SURVEYOR
SURVEYED MAR. 23, 1962 BY
JAMES W. BYRON - DEPUTY SCALE 1" = 200'
SURVEYED FOR CARL FELKER

COUNTY SURVEYORS FILE DATA
DO NOT REMOVE FROM OFFICE

