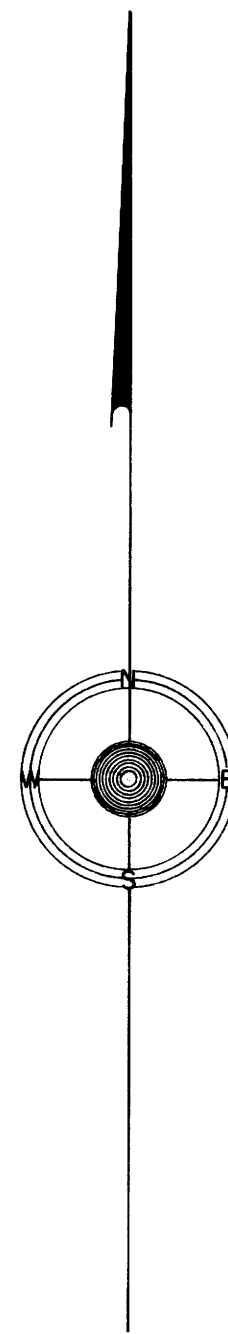
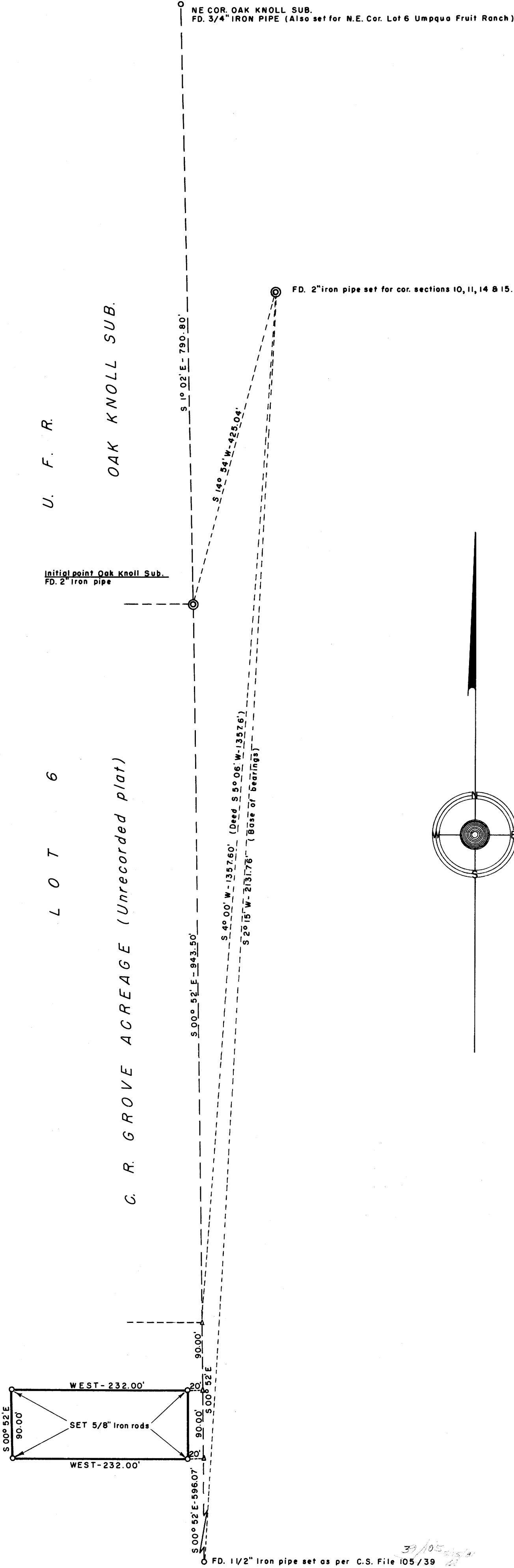


SURVEY IN LOT 6, UMPQUA FRUIT RANCH SECTION 15, T. 27 S., R. 6 W., W.M.

SURVEYED FOR: GILBERT LAURITZEN
SURVEYED BY: G. R. LECKLIDER-ENGR.

MARCH, 1962
SCALE: 1"=100'

NOTE: REFER TO C.S. FILE 105/39.



FILED *L.L.*
RECEIVED
MAR 27 1962

COUNTY SURVEYOR
DOUGLAS COUNTY, ORE.

REGISTERED PROFESSIONAL
ENGINEER
1979
Robert Lecklider
OCT 15, 1966
ROBERT LECKLIDER