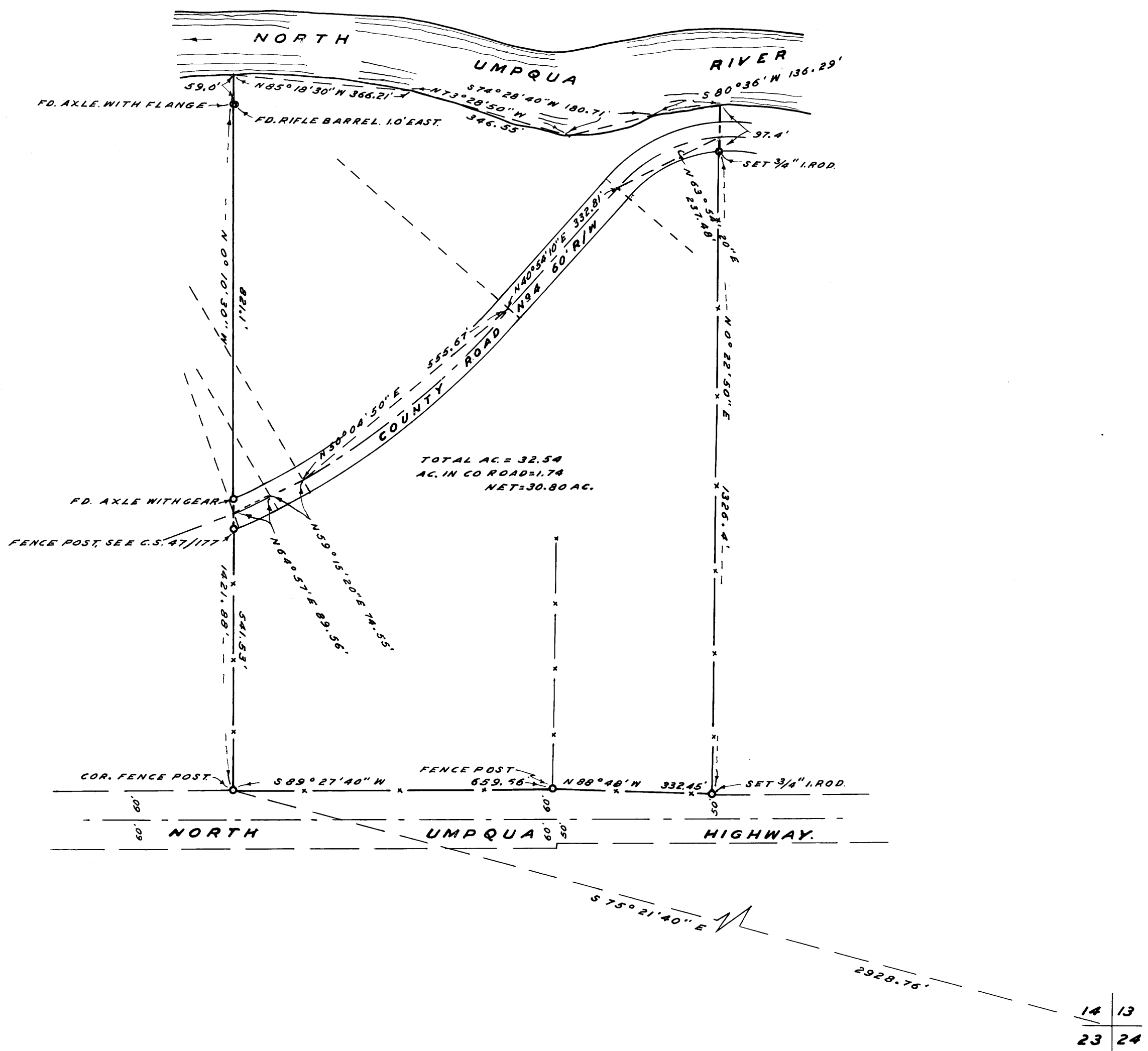


NOTE: BEARINGS BASED ON N0°10'30"W,  
PER. C.S. FILE 44/79, & 47/177



COUNTY SURVEYOR'S OFFICE  
DOUGLAS COUNTY, OREGON

SURVEY FOR DEED DESCRIPTION,  
SECTION 14, T26S., R.4W., W.M.

FRED M. DARBY COUNTY SURVEYOR  
SURVEYED MAR. 16, 1962 BY  
MILO E. GODFREY - DEPUTY SCALE 1" = 200'  
SURVEYED FOR H. CROOK

Milo E. Godfrey

COUNTY SURVEYORS FILE DATA  
DO NOT REMOVE FROM OFFICE