

COUNTY SURVEYORS FILE DATA
DO NOT REMOVE FROM OFFICE

FILED
RECEIVED
MAR 20 1962
COUNTY SURVEYOR
DOUGLAS COUNTY, ORE.

LOT 2 UMPQUA FRUIT RANCH
Sec. 14 T27S R6W W.M.

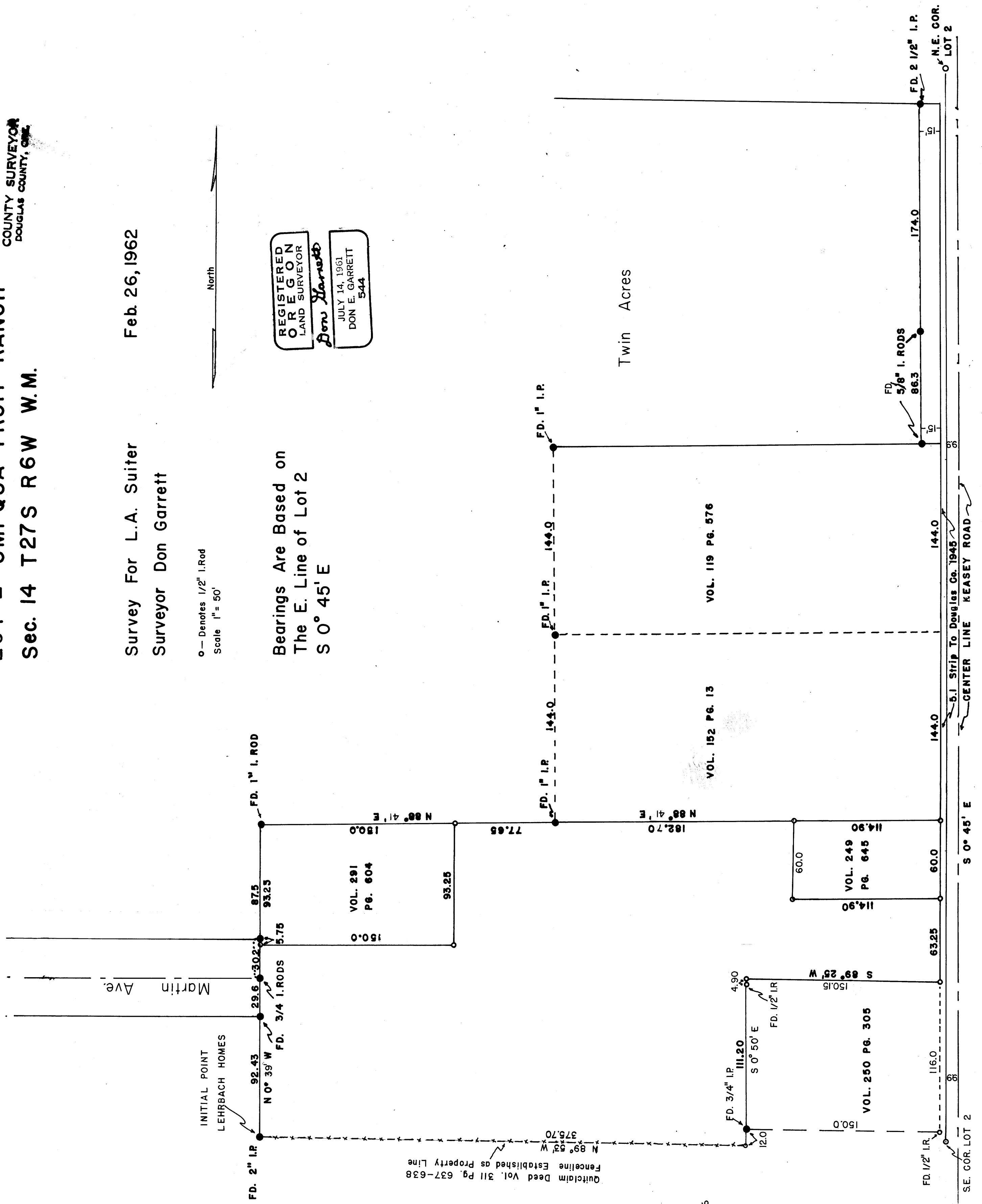
Survey For L.A. Suiter
Surveyor Don Garrett
Feb. 26, 1962

o— Denotes 1/2" I.Rod
Scale 1" = 50'

North

REGISTERED
OR E.G.O.N
LAND SURVEYOR
Don Garrett
JULY 14, 1961
DON E. GARRETT
544

Bearings Are Based on
The E. Line of Lot 2
S 0° 45' E



F.H. Jacobsen
Vol. 233 Pg. 466