

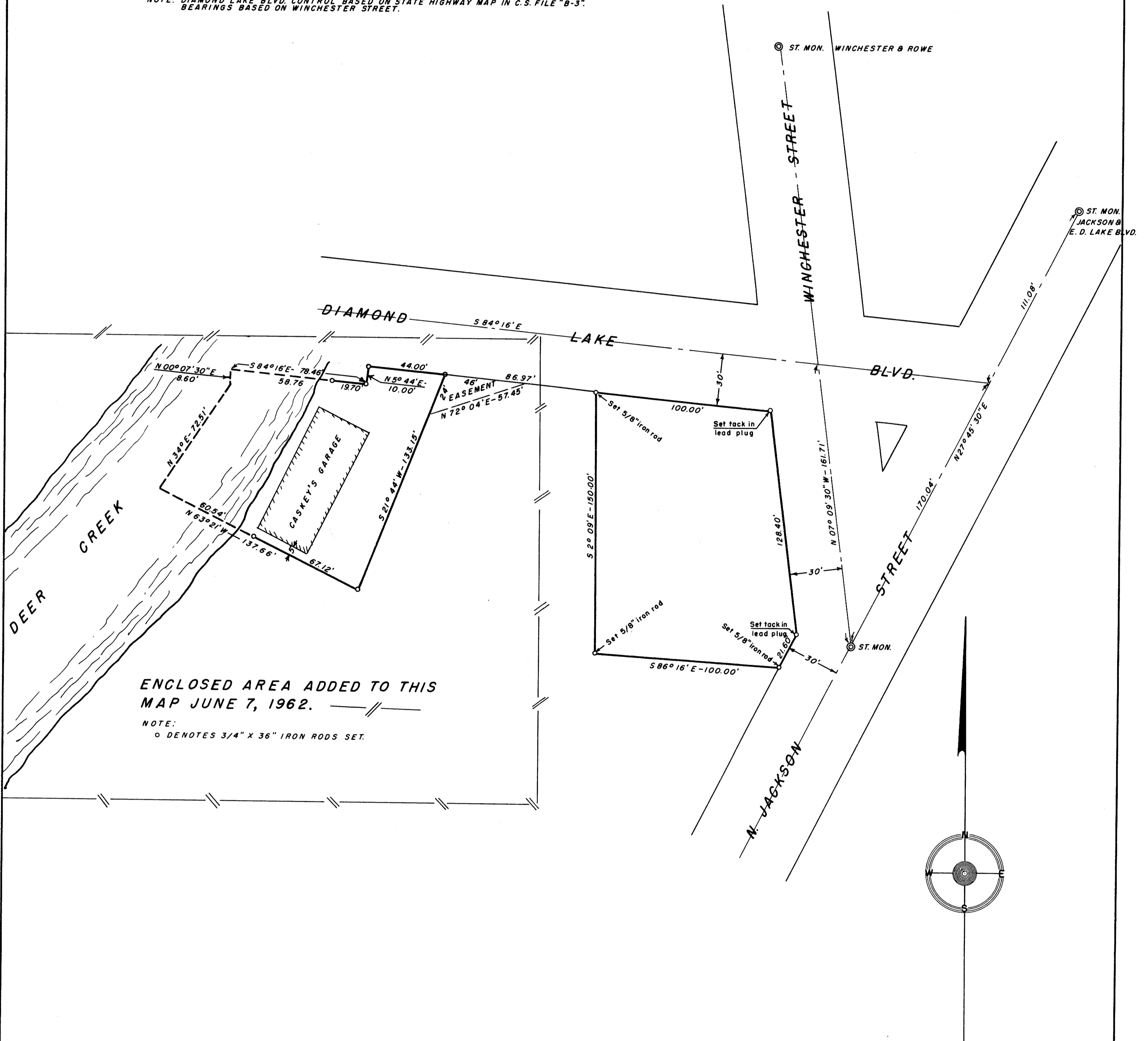
COUNTY SURVEYORS FILE DATE
DO NOT REMOVE FROM OFFICE

SURVEY IN WM. T. PERRY D.L.C. NO. 38, T.27S., R.5W., W.M. ROSEBURG, DOUGLAS COUNTY, OREGON

SURVEYED BY: G. R. LECKLIDER-ENGINEER
SURVEYED FOR: STANDARD OIL COMPANY OF CALIFORNIA
AMENDED FOR: B. A. YOUNG

SCALE: 1" = 40'
FEBRUARY, 1962
JUNE, 1962

NOTE: DIAMOND LAKE BLVD. CONTROL BASED ON STATE HIGHWAY MAP IN C.S. FILE "B-3".
BEARINGS BASED ON WINCHESTER STREET.



ENCLOSED AREA ADDED TO THIS
MAP JUNE 7, 1962.

NOTE:
○ DENOTES 3/4" X 36" IRON RODS SET.



FILED *LL*
RECEIVED

MAR 19 1962

COUNTY SURVEYOR
DOUGLAS COUNTY, ORE.

FILE M23-21