

SURVEY IN

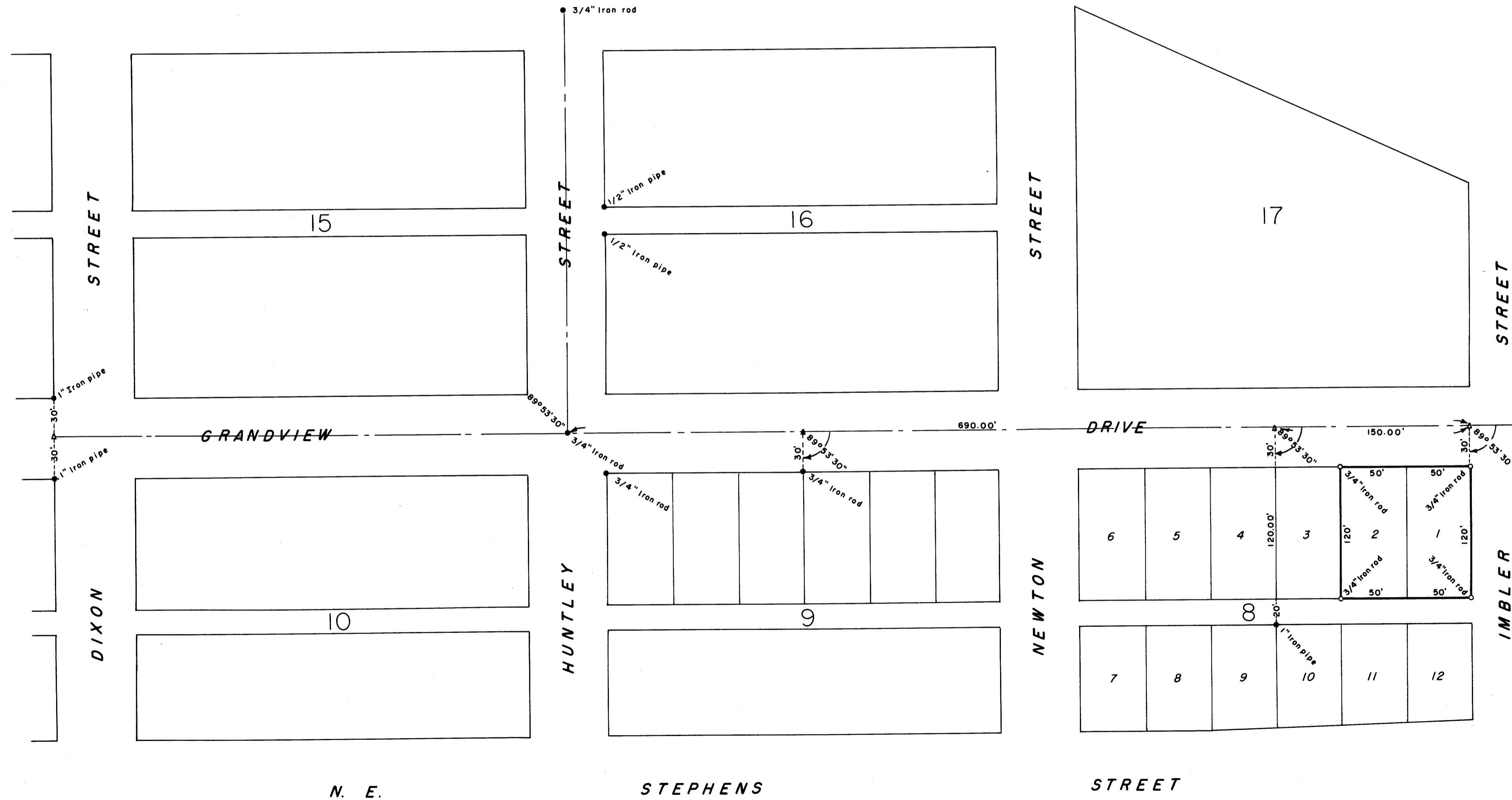
BLOCK 8, JONES ADDITION TO ROSEBURG

SW 1/4 NW 1/4, SECTION 18, T.27 S., R.5 W. WM., DOUGLAS COUNTY, OREGON
 SURVEYED BY: G. R. LECKLIDER-ENGINEER
 SURVEYED FOR: EDWARD KENNY

COUNTY SURVEYORS FILE DATA
 DO NOT REMOVE FROM OFFICE

SCALE: 1" = 60'
 FEBRUARY, 1962

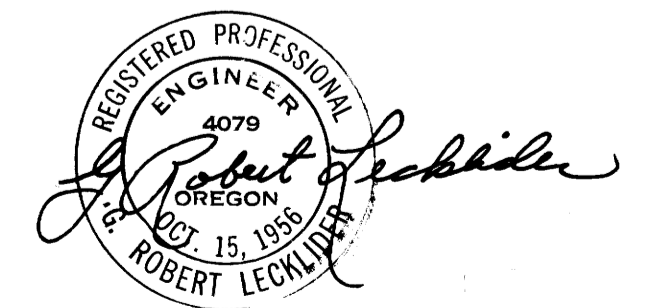
○ DENOTES MONUMENTS FOUND.
 ○ DENOTES MONUMENTS SET.



FILED *L.L.*
 RECEIVED

MAR 19 1962

COUNTY SURVEYOR
 DOUGLAS COUNTY, ORE.



MAP FILE M 23-1-20

MAP FILE M 23-1-20