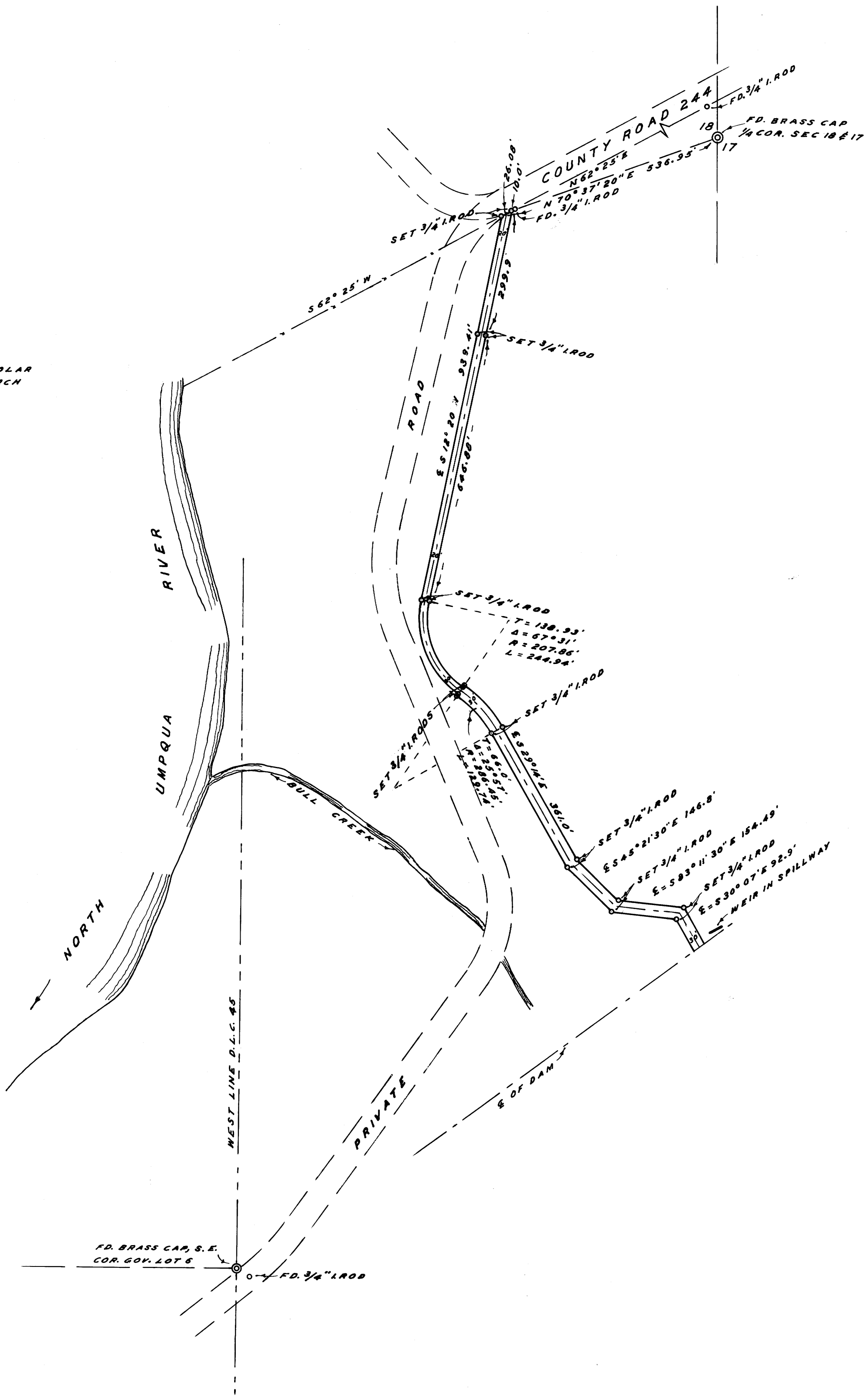
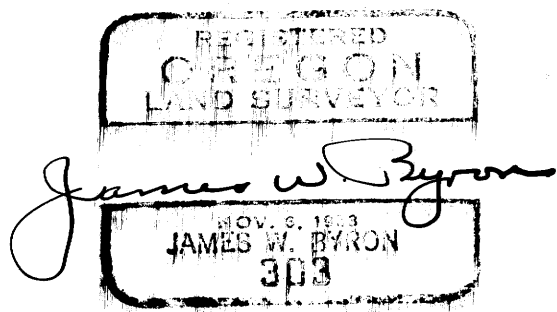


NOTE: BEARINGS BASED ON A SOLAR  
OBSERVATION TAKEN MARCH  
3, 1959.



COUNTY SURVEYOR'S OFFICE  
DOUGLAS COUNTY, OREGON

SURVEY FOR R/W DESCRIPTION  
SECTION 18, T26S, R.4W, W.M.



FRED M. DARBY COUNTY SURVEYOR  
SURVEYED JAN. 3, 1962 BY  
JAMES W. BYRON - DEPUTY SCALE 1" = 200'  
SURVEYED FOR STATE GAME COMM.

COUNTY SURVEYORS FILE DATA  
DO NOT REMOVE FROM OFFICE