

COUNTY SURVEYORS FILE DATA  
DO NOT REMOVE FROM OFFICE

COUNTY SURVEYOR'S OFFICE  
DOUGLAS COUNTY, OREGON

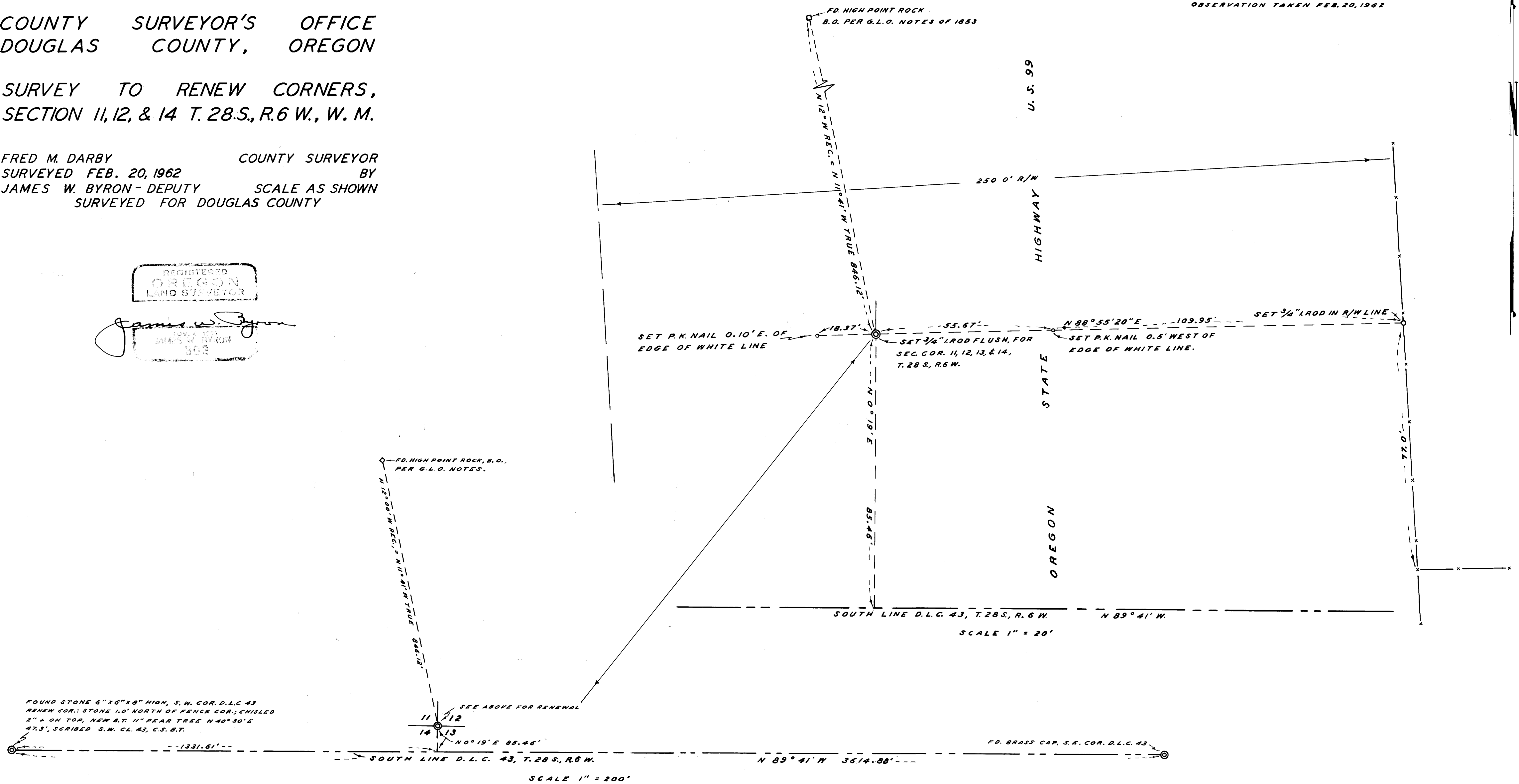
SURVEY TO RENEW CORNERS,  
SECTION 11, 12, & 14 T. 28 S., R. 6 W., W. M.

FRED M. DARBY COUNTY SURVEYOR  
SURVEYED FEB. 20, 1962 BY  
JAMES W. BYRON - DEPUTY SCALE AS SHOWN  
SURVEYED FOR DOUGLAS COUNTY

REGISTERED  
OREGON  
LAND SURVEYOR

*James W. Byron*  
JAMES W. BYRON  
503

NOTE: BEARINGS ARE TRUE, BASED ON A SOLAR  
OBSERVATION TAKEN FEB. 20, 1962



C.S. FILE 52/108  
M 23-16

801/26 571-54