

FILED L.L.  
RECEIVED

FEB 23 1962

COUNTY SURVEYOR  
DOUGLAS COUNTY, ORE.

COUNTY SURVEYORS FILE DATA  
DO NOT REMOVE FROM OFFICE

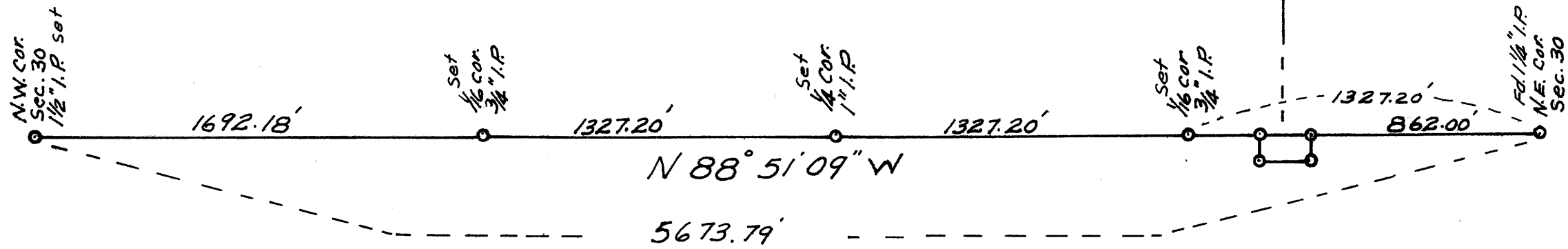
# W.G. WORKMAN SURVEY

NORTH LINE SEC. 30, T32S R6W, W.M.

DOUGLAS CO., ORE.

FEB. 1962

SCALE 1" = 500'



REGISTERED  
OREGON  
LAND SURVEYOR

*Wm. B. Paulin*

JULY 14, 1961  
WM. B. PAULIN  
552

NOTE: Bearings are true.  
based on solar observation  
Feb. 17, 1962.

O.S. FILE No. 51/227  
MAP FILE M 23-14

M 23-14