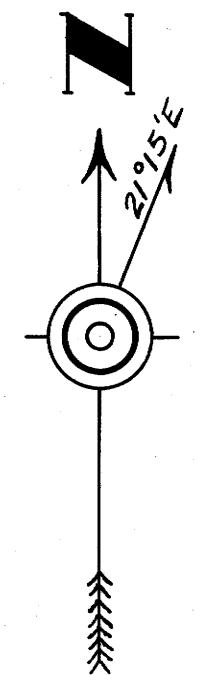


F.W. HOFFMEISTER

NORTH HALF OF
SECTION 16
 TWP. 28 SOUTH, RANGE 6 W, W.M.
 AS SURVEYED AUGUST, 1940.
 Scale: 1-inch = 200 ft.



Stone 4x5x16"
 W.O. 5 52 1/2° E 37.62
 B.O. 15° 54 1/2° E 58.08
 Set by M.B. Germond 1908.

PLAT
of
SURVEY
for
J BICKFORD

Stone 4" x 5" x 16" N 0.524 1/2 E 57'

B.O. 15° 34' 49" E 881 ft.

East 35.39 chs.

29.504 Acres

Mud 38° West 644'
B.O. 20° N 55° 48' W 97'

Stone 6" x 8" x 18"

West 26.78 chs.

Gedar Post

N 38° 12' W 63.5'

Stone 4" x 5" x 16" East 117.4 chs.

West 857

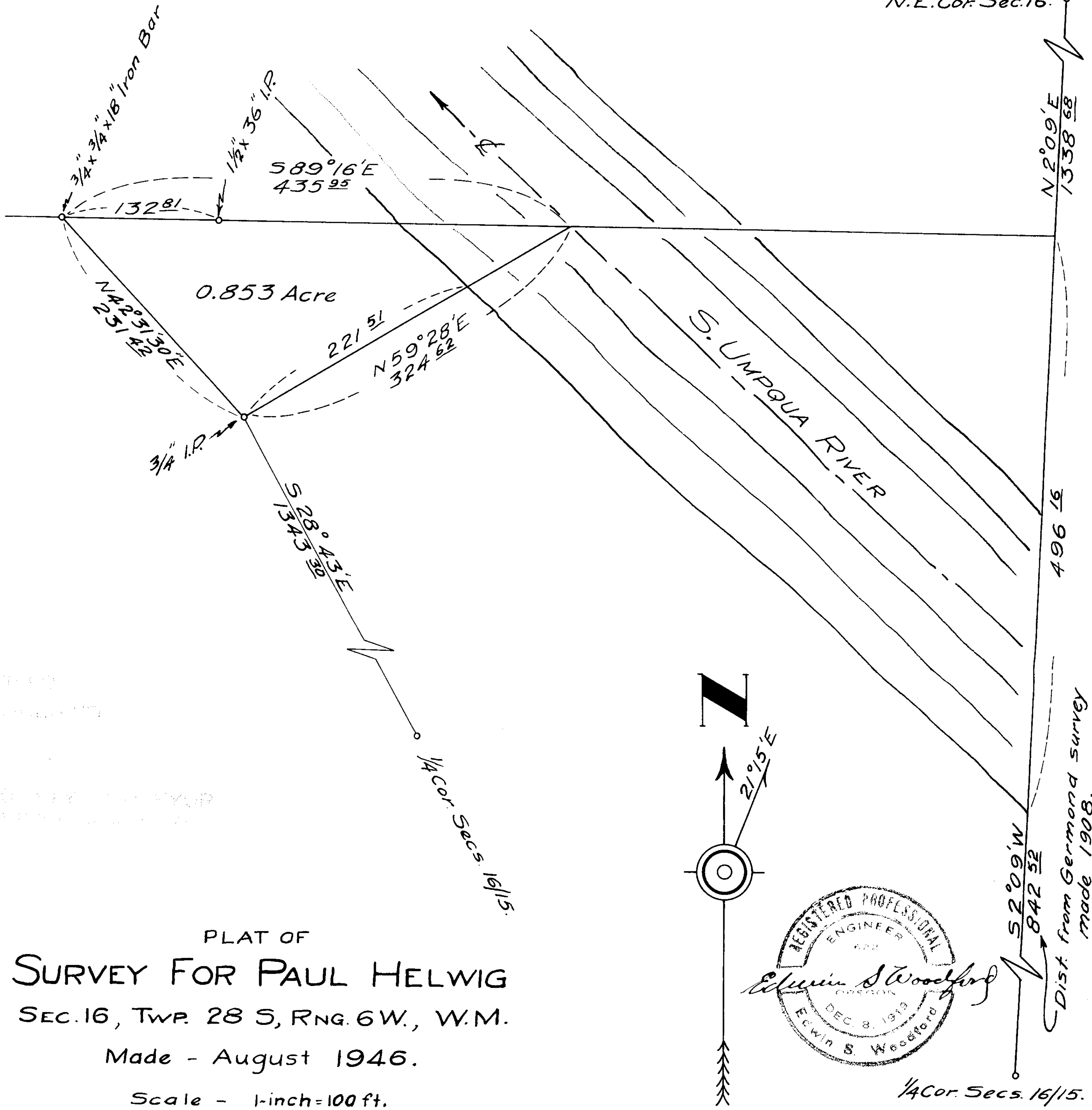
1/2 of the N 1/2 S 16 T 28 S, R 6 W W.M.

16" Line
N 42° 50' West 12.28 chs.

1/4 cor bet. S 15 & 16

M.B. Germond - Civ Eng. 1908.

N.E. Cor. Sec. 16.



PLAT OF
SURVEY FOR PAUL HELWIG
 SEC. 16, TWP. 28 S, RNG. 6 W., W.M.

Made - August 1946.

Scale - 1-inch = 100 ft.

**COUNTY SURVEYORS FILE DATA
 DO NOT REMOVE FROM OFFICE**



1/4 Cor. Secs. 16/15.

CS FILE FOLDER

CONTAINS

MORE

INFORMATION