

COUNTY SURVEYORS FILE DA  
DO NOT REMOVE FROM OFFICE

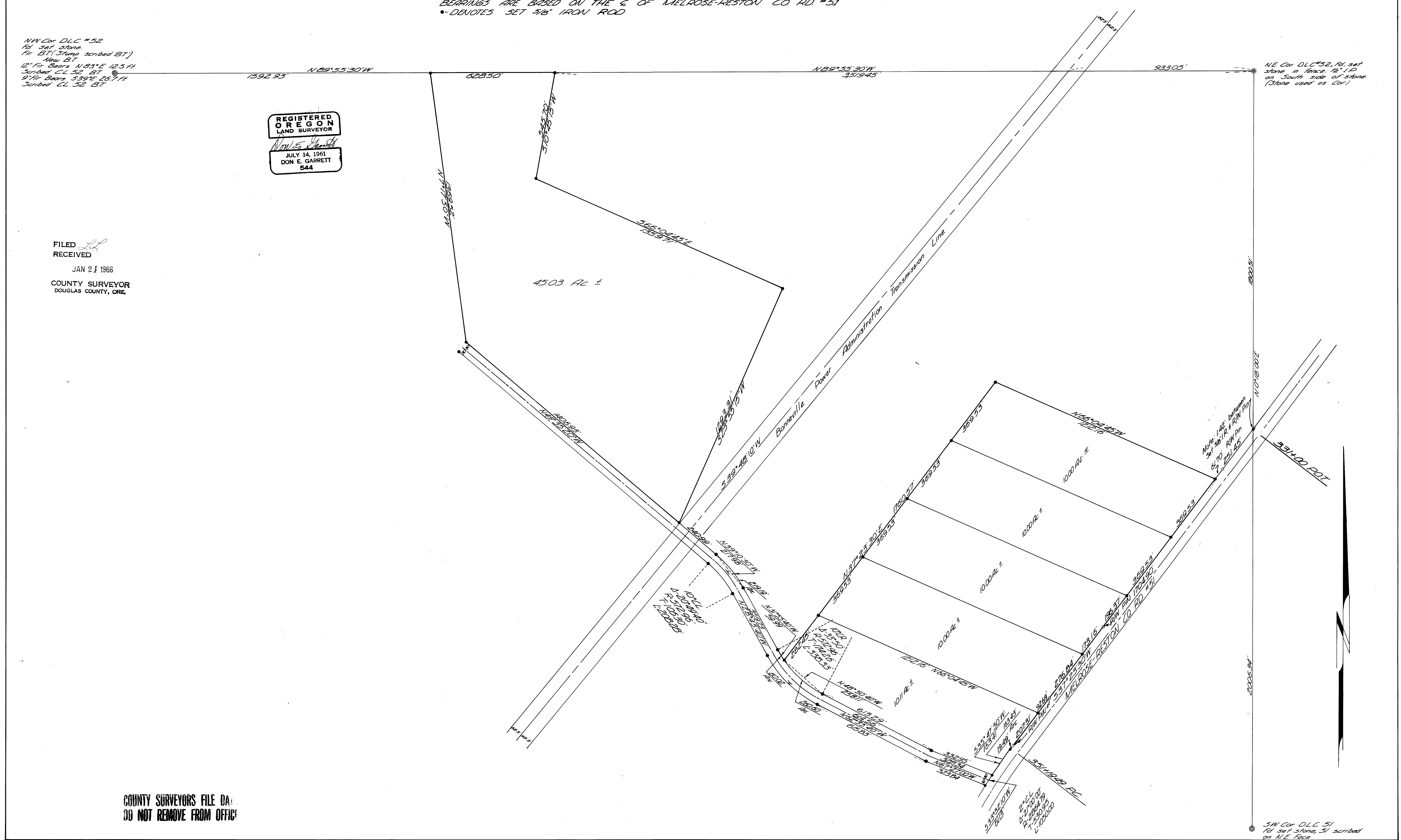
SURVEY TO ESTABLISH PROPERTY CORNERS  
IN D.L.C. 52 T27S R7W W.M.  
SURVEYED FOR HARVARD REED 1-6-66  
BY DON E. GARRETT SCALE 1"=200'  
BEARINGS ARE BASED ON THE E OF MELROSE-RESTON CO. RD #51  
• DEVOTES SET 3/8" IRON ROD

NW Cor. D.L.C. #52  
Fol. set stone  
Fol. BT (Stone scribed BT)  
New BT  
12" Fir Beams N83°E 12.5 FT  
Scribed CL 52 BT  
5 1/4" Beams 5.39°E 20.7 FT  
Scribed CL 52 BT

NE Cor. D.L.C. #52, Fol. set  
stone in Place 12 1/2"  
on South side of Stone  
(Stone used as Cor.)

REGISTERED  
OREGON  
LAND SURVEYOR  
DON E. GARRETT  
544  
JULY 14, 1961

FILED  
RECEIVED  
JAN 21 1966  
COUNTY SURVEYOR  
DOUGLAS COUNTY, ORE.



COUNTY SURVEYORS FILE DA  
DO NOT REMOVE FROM OFFICE