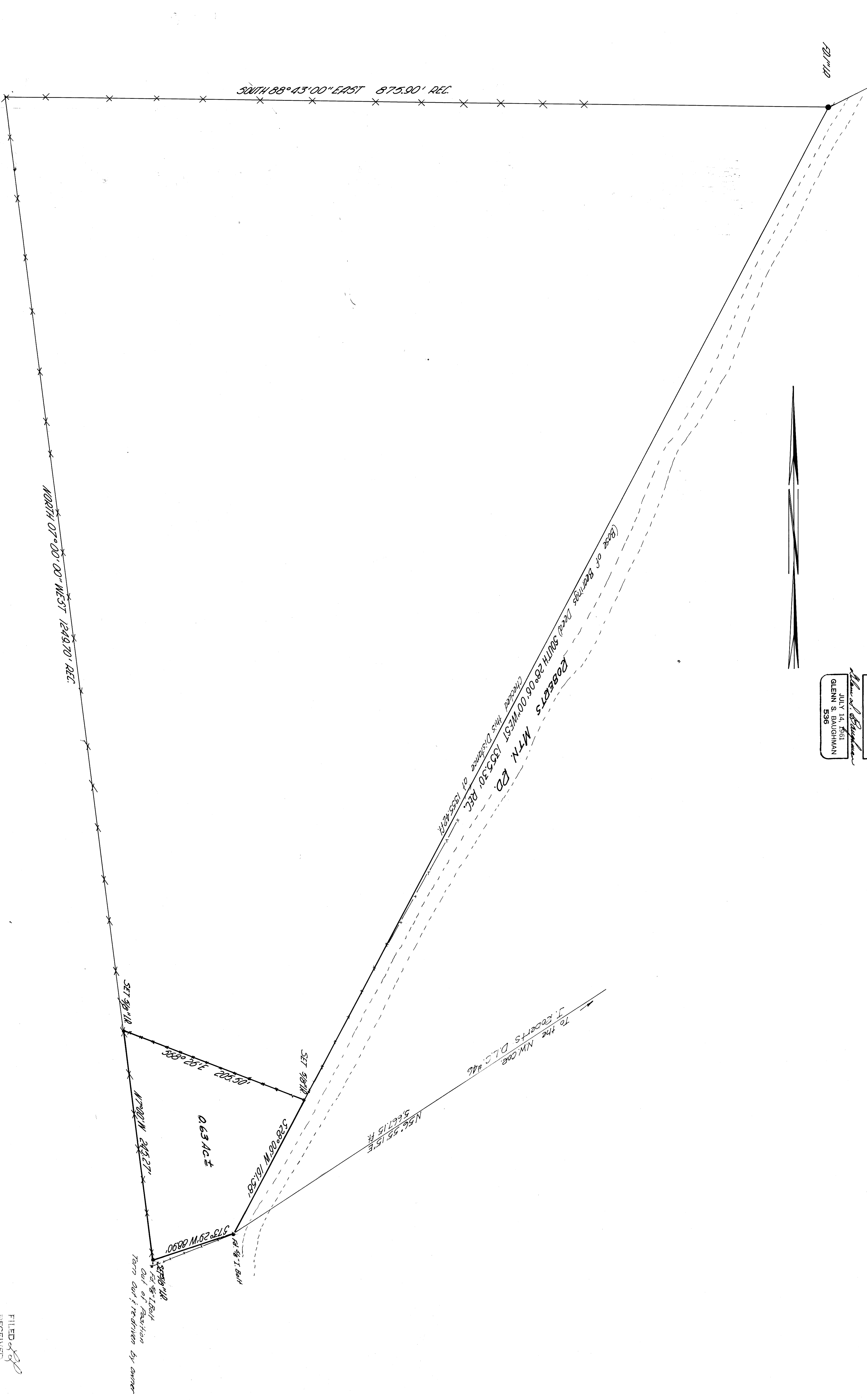


To Stone & 1st NW 1/4 of J. Roberts D.L.C. 446

SURVEY FOR PROPERTY DESCRIPTION FOR VERNON TEATER
SECTION 23, TOWNSHIP 28 SOUTH, RANGE 6 WEST W. 1.
DECEMBER 6, 1965
SURVEYED BY BAUGHMAN SURVEYING SERVICE
SCALE 1" = 50'

REGISTERED
OREGON
LAND SURVEYOR
JULY 14, 1961
GLENN
536



COUNTY SURVEYORS FILE DATA
DO NOT REMOVE FROM OFFICE

COUNTY SURVEYORS FILE DATA
DO NOT REMOVE FROM OFFICE

FILED
RECEIVED

DEC 6 1965
COUNTY SURVEYOR
DOUGLAS COUNTY, OREG.