

SCHOLFIELD CREEK DRAINAGE  
WALKER CREEK ACREAGE  
SECTIONS 11, 13, & 14, T22S, R12W, W.M., DOUGLAS COUNTY OREGON

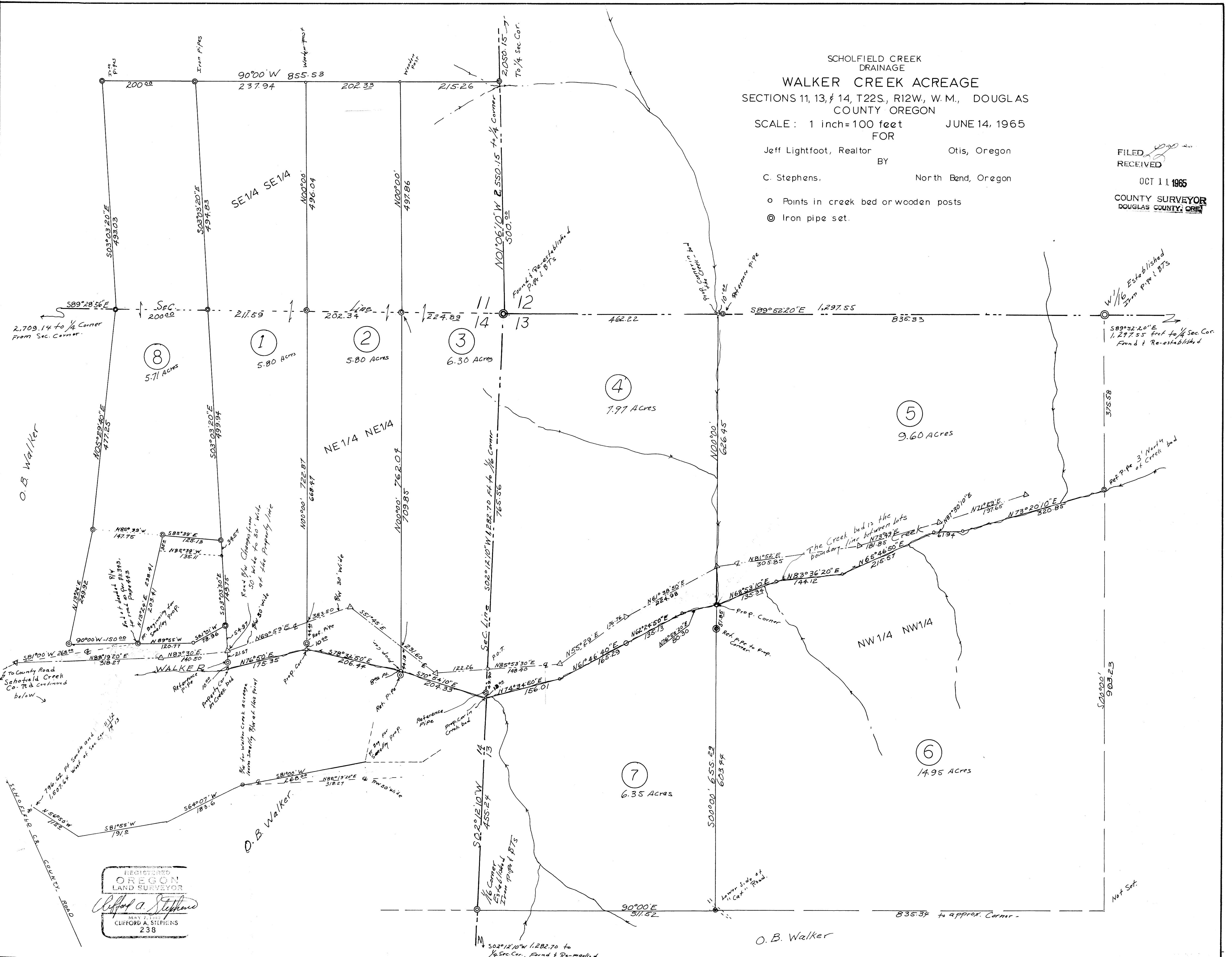
SCALE: 1 inch = 100 feet  
JUNE 14, 1965  
FOR

Jeff Lightfoot, Realtor  
BY  
C. Stephens, North Bend, Oregon  
Otis, Oregon

FILED  
RECEIVED  
OCT 11 1965

COUNTY SURVEYOR  
DOUGLAS COUNTY, OREGON

- Points in creek bed or wooden posts
- ⊙ Iron pipe set.



REGISTERED  
OREGON  
LAND SURVEYOR  
*Clifford A. Stephens*  
CLIFFORD A. STEPHENS  
238

SURVEY NO. \_\_\_\_\_ IN SEC. 11, 12, 13, & 14 T. 22S R. 12 W.M.

MADE FOR JEFF LIGHTFOOT DATE MAY & JUNE ~~1964~~ 1965

MADE BY Clifford A. Stephens REGISTERED LAND SURVEYOR

ORE NO 238 DATE OF REGISTRATION May 7, 1965

T22S. R12W. W. M. Douglas County, Ore.

The  $\frac{1}{4}$  sec. corner between sec's 11 & 12 is marked with a  $1\frac{1}{2}$ " Iron pipe and Brss Cap as noted by James W. Ryan, Deputy Co Surveyor from which:

- A Hemlock 32" in dia brs East 47.5 ft.
- A Hemlock stump 36" in dia brs. S38\*W 31.7 ft.

---

The  $\frac{1}{4}$  corner between sec's 11 and 14, T22S., R12W.

Find 1" iron pipe for the  $\frac{1}{4}$  corner and one original BT stump from which:

- New Bts
- A fir 10" in dia brs S36\*30"W 107.5 ft
- A Hemlock 4" in dia. brs. N78\*30'E 40.2 ft.
- Orig. BT

---

The corner to Sec's 11, 12, 13 and 14 T22S., R12W.

Find old cedar limbpost for corner Set  $\frac{3}{4}$ " iron pipe along the side of the old post from which:

- A fir Stump now 50" in dia brs N79\*W 39.00ft.
- A fir stump now 40" in dia brs S62 $\frac{1}{2}$ \*W 19.40 ft
- (both orig bts)

---

The  $\frac{1}{4}$  sec. corner bet. 12 and 13, T22S., R12W.

Found 3"x4 $\frac{1}{2}$ " alder post for the corner from which:

- A Fir stump now 50" in dia. brs S61\*30'W 72.6 ft.
- A Fir Stump now 50" in dia. brs. N86\*W 31.6 ft.
- (orig. BTs scribing visible)
- New BT

Set new red cedar post for the cor. from which:

- A red cedar 18" in dia. brs. N61\*30'W 52.9 ft.

The West 1/16 cor. between sec's 12 & 13 T22S., R12W

Set the W 1/16 corner equidistant between the section corner to sec's 11, 12, 13 & 14 and the  $\frac{1}{4}$  sec. corner bet. sec's 12 & 13 at 1,297.55 feet from the above corners. Set a  $\frac{3}{4}$  inch iron pipe for the corner from which:

A fir 8" in dia. brs. S42\*30'E 24.0 ft.

A Red cedar 16" in dia bfs. N48\*W 19.9 ft.

---

The  $\frac{1}{4}$  sec. corner between sec's 13 & 14, T22S., R12W.

Set a new red cedar post for the  $\frac{1}{4}$  corner from which:

The Hemlock 26" in dia bearing N65\*E 8.6 ft.

is tipped over.

A Fir 40" in dial brs. N62\*W 23.1 ft. (scribing visible)

---

The N 1/16 corner between sec's 13 & 14, T22S., R12W.

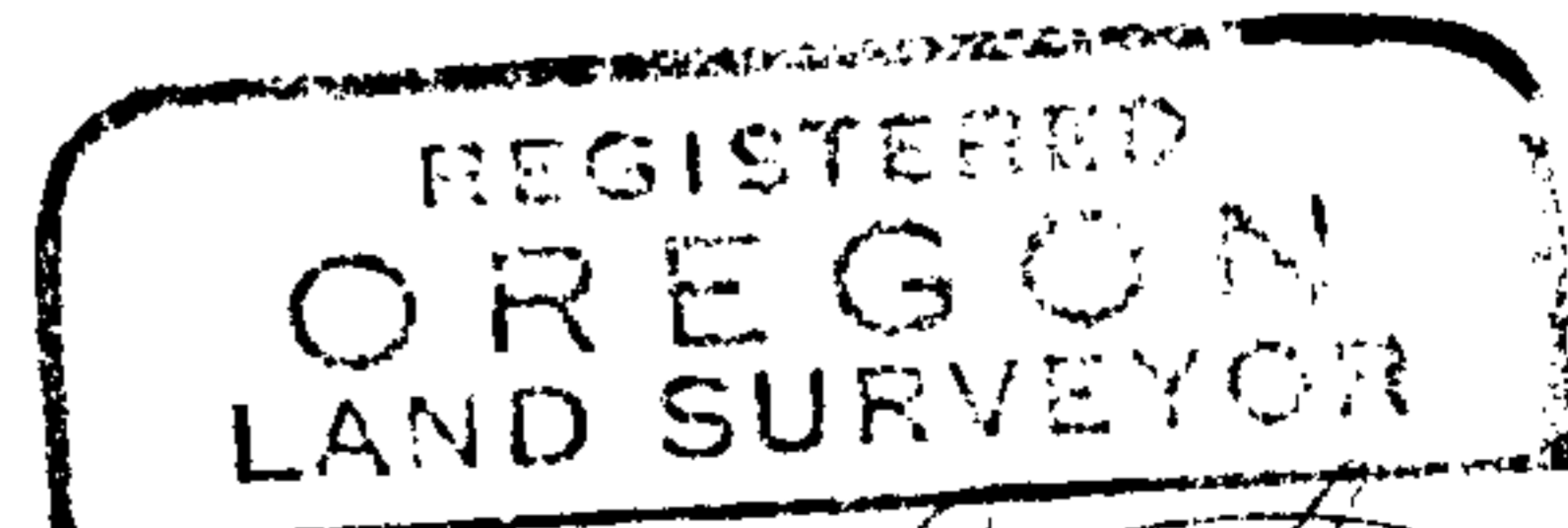
Set the N1/16 corner equidistant between the section corner and the  $\frac{1}{4}$  corner. Set a  $\frac{1}{2}$ " iron pipe 1,282.70 feet from the adjacent corners from which

A red cedar stump 52" in dia. brs. S79\*E 37.0 ft.  
scribed N 1/16 T22S., R12W.

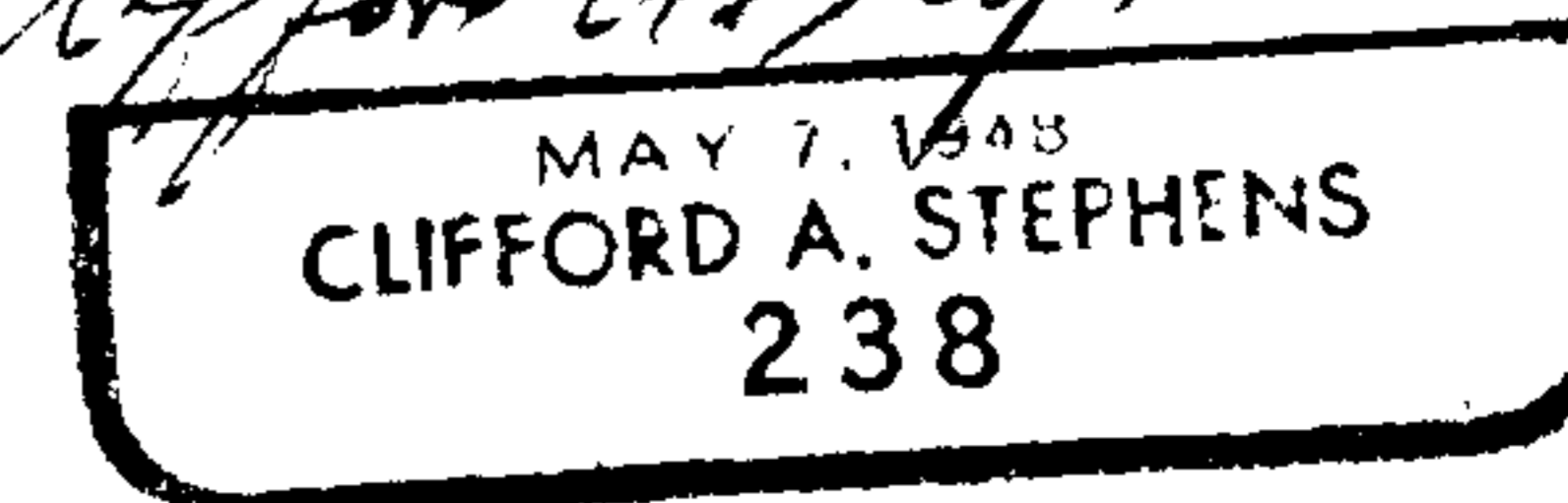
FILED  
RECEIVED

OCT 11 1965

COUNTY SURVEYOR  
DOUGLAS COUNTY, ORE.



*Clifford A. Stephens*



File 51/321 b