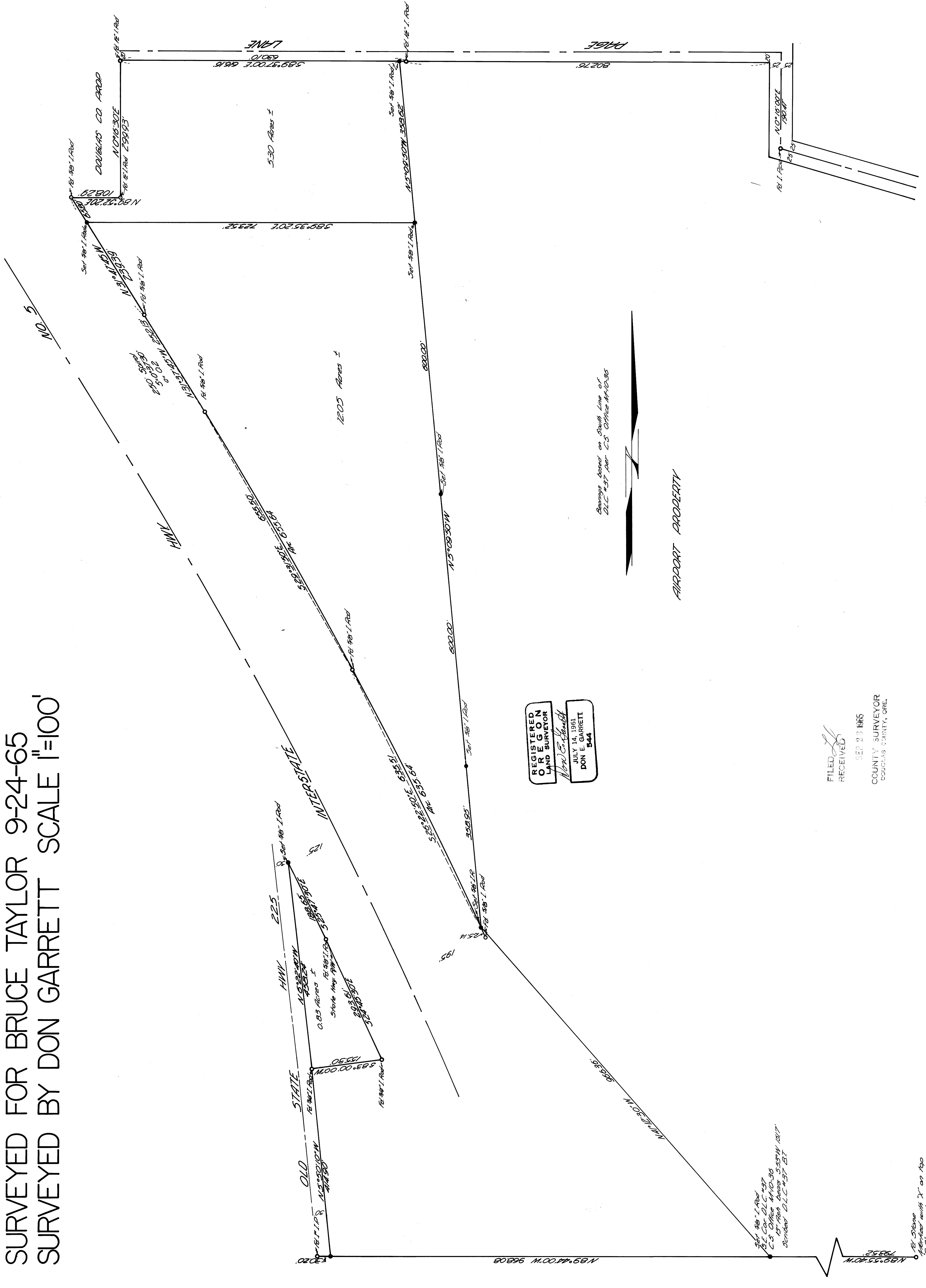


# SURVEY FOR PROPERTY DESCRIPTION IN D.L.C. NO. 37 T.25S. R.5W. W.M. SURVEYED FOR BRUCE TAYLOR 9-24-65 SURVEYED BY DON GARRETT SCALE 1"=100'



REGISTERED  
LAND SURVEYOR  
DON E. GARRETT  
544

JULY 14, 1961

Survey based on South Line of  
D.L.C. #37, per C.S. Office M-1635

FILED  
RECEIVED  
SEP 23 1965  
COUNTY SURVEYOR  
DOUGLASS COUNTY, ORE.

Pl. Stone  
C.S. on 5006