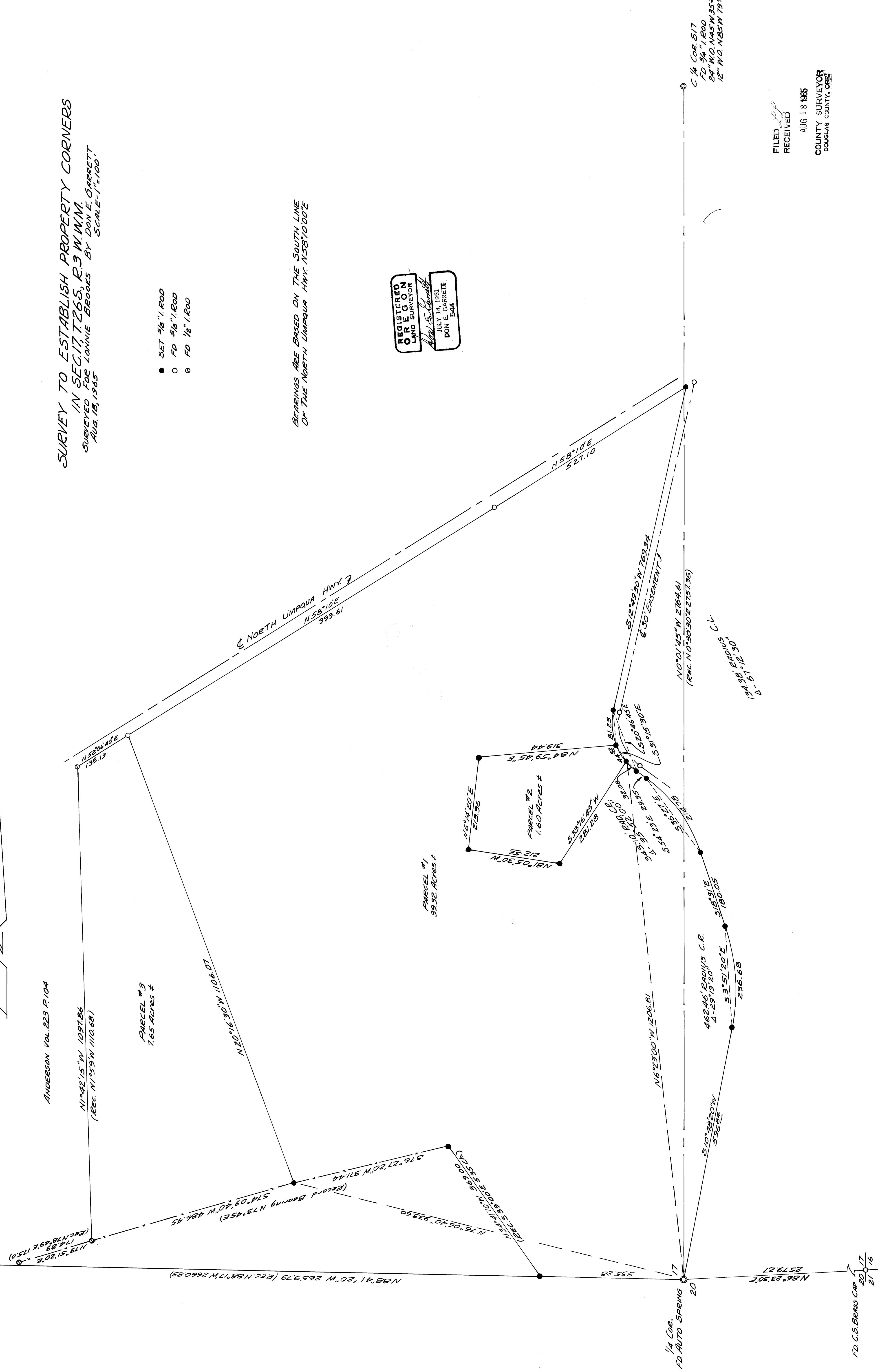
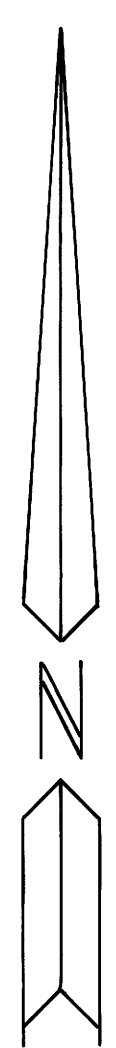
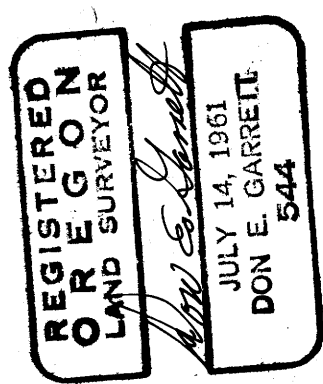


**SURVEY TO ESTABLISH PROPERTY CORNERS
IN SEC. 17, T. 26 S., R. 3 W. W.M.
SUBVEYED FOR LONNIE BROOKS BY DON E. GARRETT
AUG. 18, 1965 SCALE - 1" = 100'**

- SET 5/8" I. ROD
- FD 5/8" I. ROD
- FD 1/2" I. ROD

BEARINGS ARE BASED ON THE SOUTH LINE
OF THE NORTH UMPIQUA HWY. N58°10'00"E



FILED
RECEIVED
AUG 18 1965
COUNTY SURVEYOR
DOUGLAS COUNTY, ORE.