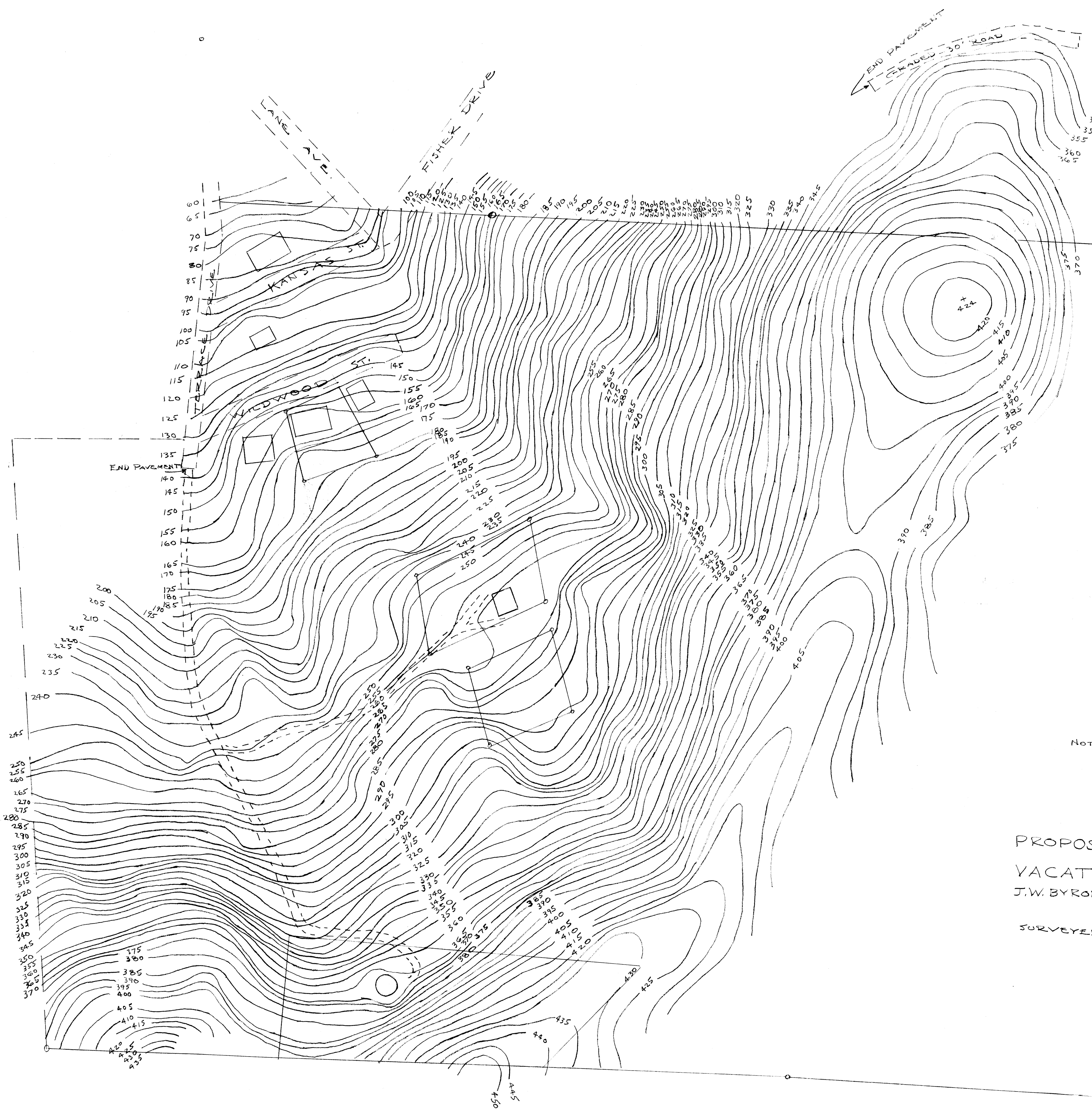


COUNTY SURVEYORS FILE DATA
DO NOT REMOVE FROM OFFICE



REGISTERED
OREGON
LAND SURVEYOR
James W. Byron
J.W. BYRON, 1963
JAMES W. BYRON
303

SCALE 1"=100'

NOTE - DATUM ASSUMED ADD 626.6'
TO ARRIVE AT TRUE ELEVATION

PROPOSED STREET ALIGNMENT
OF
VACATED TERRACE PARK
J.W. BYRON, SURVEYOR. JUNE 2, 1964
ROSEBURG, OREGON
SURVEYED FOR - BENWRICH
AND WEARICH

FILED
RECEIVED

SEP 3 1965

COUNTY SURVEYOR
DOUGLAS COUNTY, ORE.

COUNTY SURVEYORS FILE DATA
DO NOT REMOVE FROM OFFICE