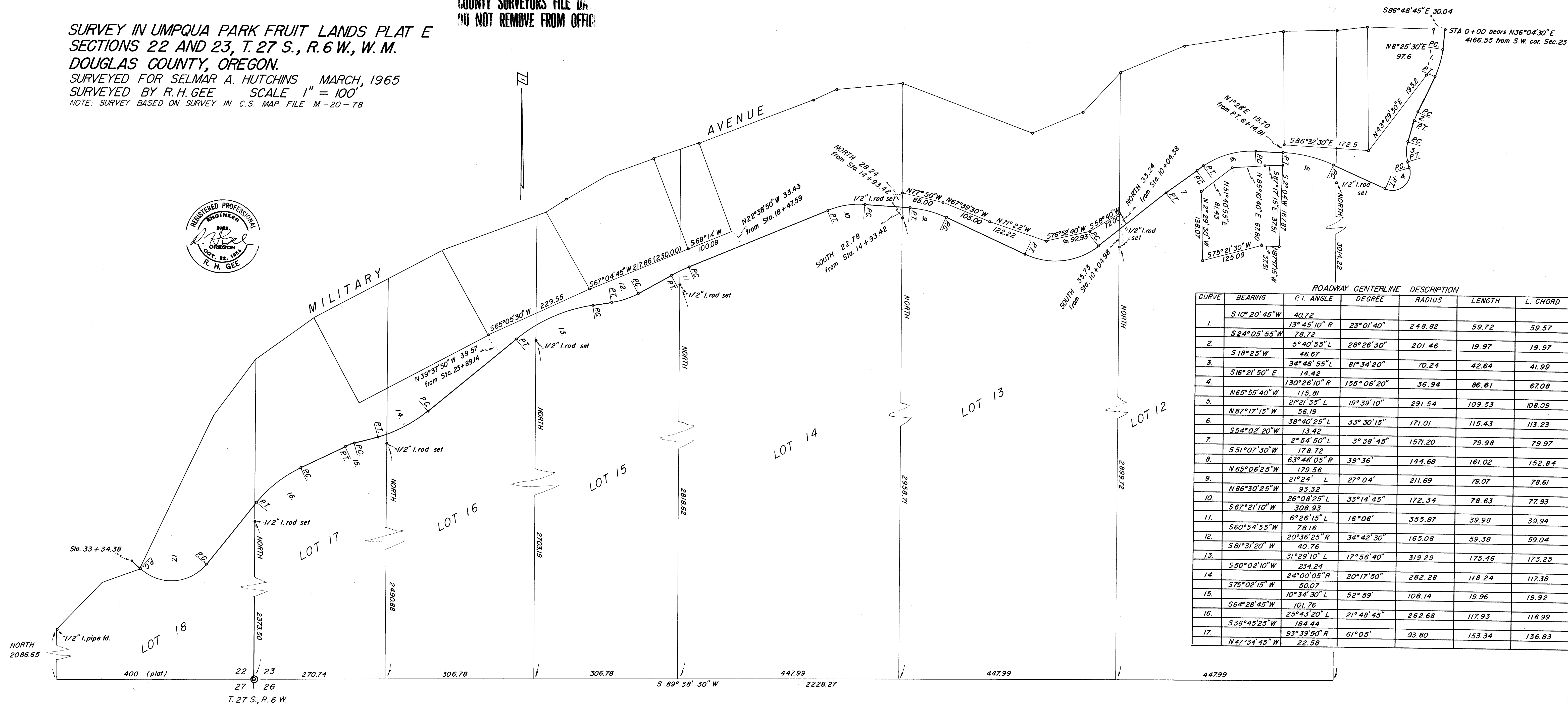


**SURVEY IN UMPQUA PARK FRUIT LANDS PLAT E  
SECTIONS 22 AND 23, T. 27 S., R. 6 W., W. M.  
DOUGLAS COUNTY, OREGON.**

SURVEYED FOR SELMAR A. HUTCHINS MARCH, 1965  
SURVEYED BY R.H.GEE SCALE 1" = 100'  
NOTE: SURVEY BASED ON SURVEY IN C.S. MAP FILE M-20-78

COUNTY SURVEYORS FILE DA  
DO NOT REMOVE FROM OFFICE



ROADWAY CENTERLINE DESCRIPTION

CURVE	BEARING	P. I. ANGLE	DEGREE	RADIUS	LENGTH	L. CHORD
1.	S 10° 20' 45" W	40.72				
		13° 45' 10" R	23° 01' 40"	248.82	59.72	59.57
2.	S 24° 05' 55" W	78.72				
		5° 40' 55" L	28° 26' 30"	201.46	19.97	19.97
3.	S 18° 25' W	46.67				
		34° 46' 55" L	81° 34' 20"	70.24	42.64	41.99
4.	S 16° 21' 50" E	14.42				
		130° 26' 10" R	155° 06' 20"	36.94	86.81	67.08
5.	N 65° 55' 40" W	115.81				
		21° 21' 35" L	19° 39' 10"	291.54	109.53	108.09
6.	N 87° 17' 15" W	56.19				
		38° 40' 25" L	33° 30' 15"	171.01	115.43	113.23
7.	S 54° 02' 20" W	13.42				
		2° 54' 50" L	3° 38' 45"	1571.20	79.98	79.97
8.	S 51° 07' 30" W	178.72				
		63° 46' 05" R	39° 36'	144.68	161.02	152.84
9.	N 65° 06' 25" W	179.56				
		21° 24' L	27° 04'	211.69	79.07	78.61
10.	N 86° 30' 25" W	93.32				
		26° 08' 25" L	33° 14' 45"	172.34	78.63	77.93
11.	S 67° 21' 10" W	308.93				
		6° 26' 15" L	16° 06'	355.87	39.98	39.94
12.	S 60° 54' 55" W	78.16				
		20° 36' 25" R	34° 42' 30"	165.08	59.38	59.04
13.	S 81° 31' 20" W	40.76				
		31° 29' 10" L	17° 56' 40"	319.29	175.46	173.25
14.	S 50° 02' 10" W	234.24				
		24° 00' 05" R	20° 17' 50"	282.28	118.24	117.38
15.	S 75° 02' 15" W	50.07				
		10° 34' 30" L	52° 59'	108.14	19.96	19.92
16.	S 64° 28' 45" W	101.76				
		25° 43' 20" L	21° 48' 45"	262.68	117.93	116.99
17.	S 38° 45' 25" W	164.44				
		93° 39' 50" R	61° 05'	93.80	153.34	136.83
	N 47° 34' 45" W	22.58				

FILED  
RECEIVED

APR 1 1965

COUNTY SURVEYORS FILE DA  
DO NOT REMOVE FROM OFFICE

COUNTY SURVEYOR  
DOUGLAS COUNTY, ORE.