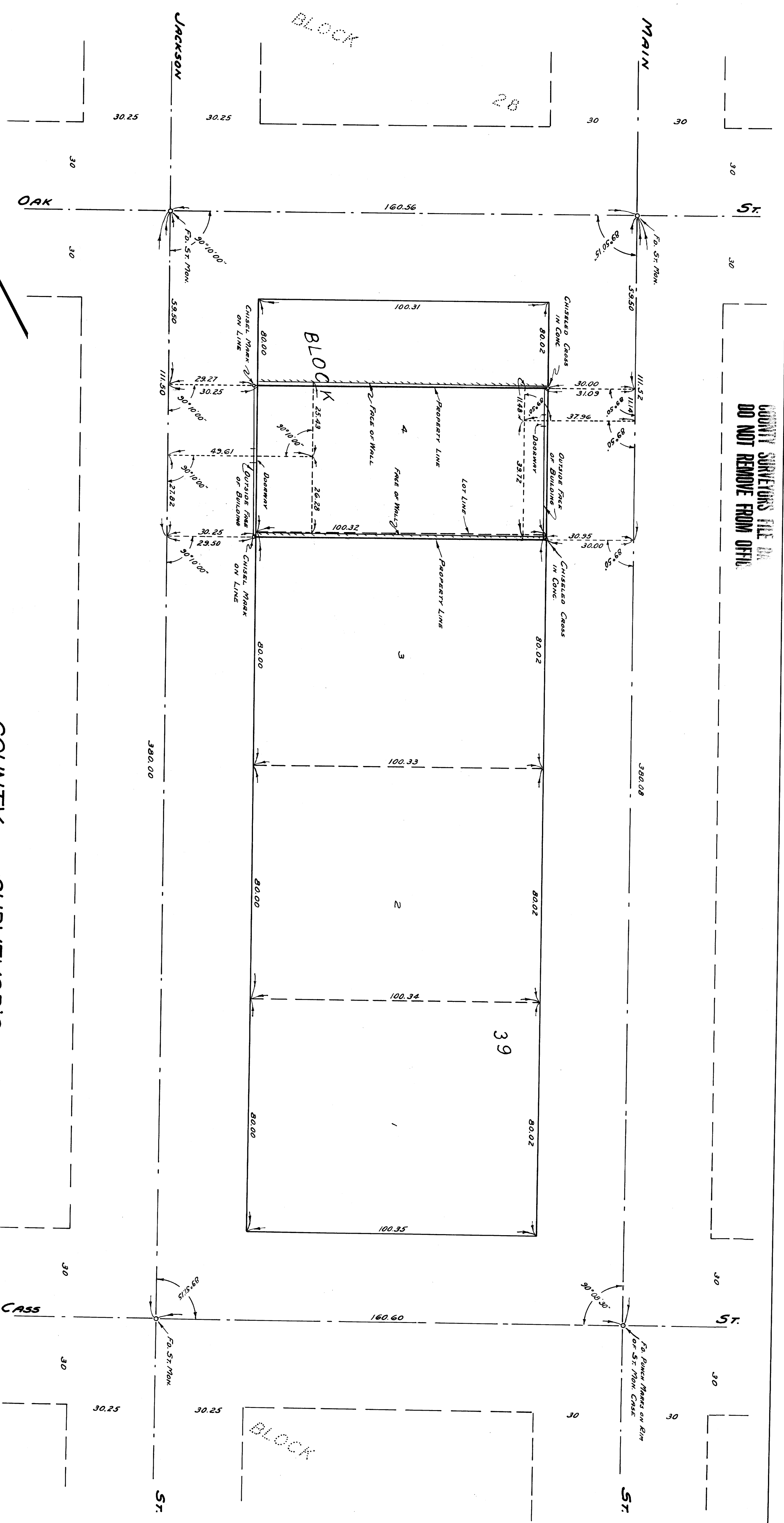


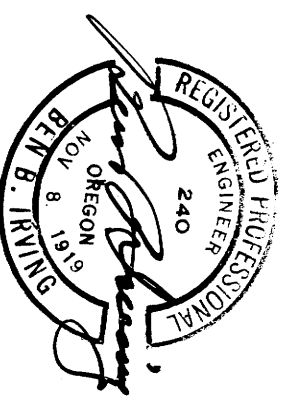
COUNTY SURVEYORS FILE NO.  
DO NOT REMOVE FROM OFFICE.



COUNTY SURVEYOR'S OFFICE  
DOUGLAS COUNTY, OREGON  
SURVEY OF PORTION OF BLOCK  
39, CITY OF ROSEBURG, OREGON

BEN. B. IRVING  
SURVEYED DEC. 19, 1950

COUNTY SURVEYOR  
SCALE 1" = 20'



COUNTY SURVEYORS FILE NO.  
DO NOT REMOVE FROM OFFICE.