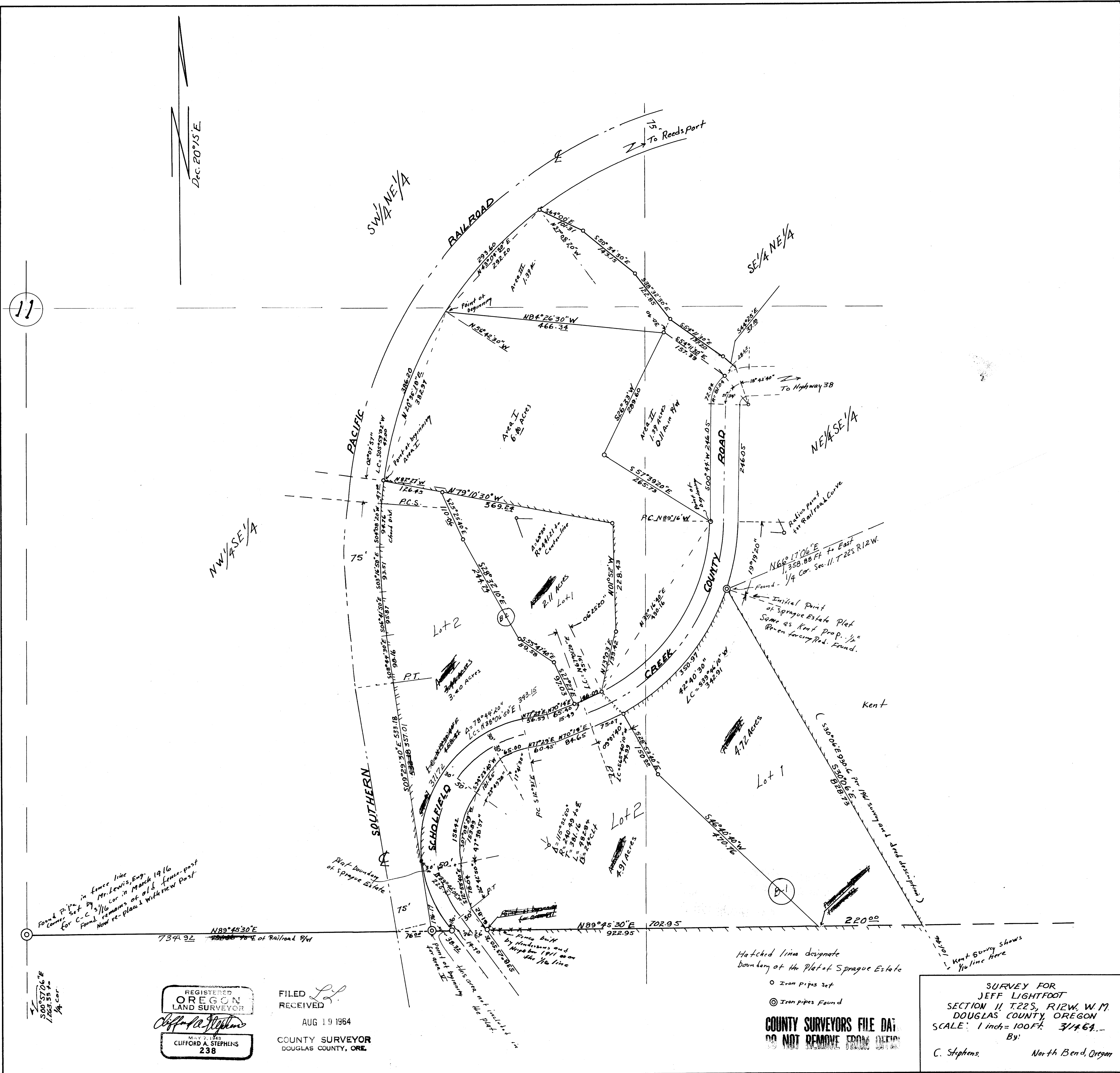


COUNTY SURVEYORS FILE DA
DO NOT REMOVE FROM OFFICE



11

REGISTERED
OREGON
LAND SURVEYOR
Clifford A. Stephens
MAY 7, 1949
CLIFFORD A. STEPHENS
238

FILED
RECEIVED
AUG 19 1964
COUNTY SURVEYOR
DOUGLAS COUNTY, ORE.

Hatched lines designate
boundary of the Plat of Sprague Estate

○ Iron Pipes Set
⊙ Iron Pipes Found

COUNTY SURVEYORS FILE DA
DO NOT REMOVE FROM OFFICE

SURVEY FOR
JEFF LIGHTFOOT
SECTION 11 T22S, R12W, W.M.
DOUGLAS COUNTY, OREGON
SCALE: 1 inch = 100 FT. 3/14/64
By:
C. Stephens, North Bend, Oregon