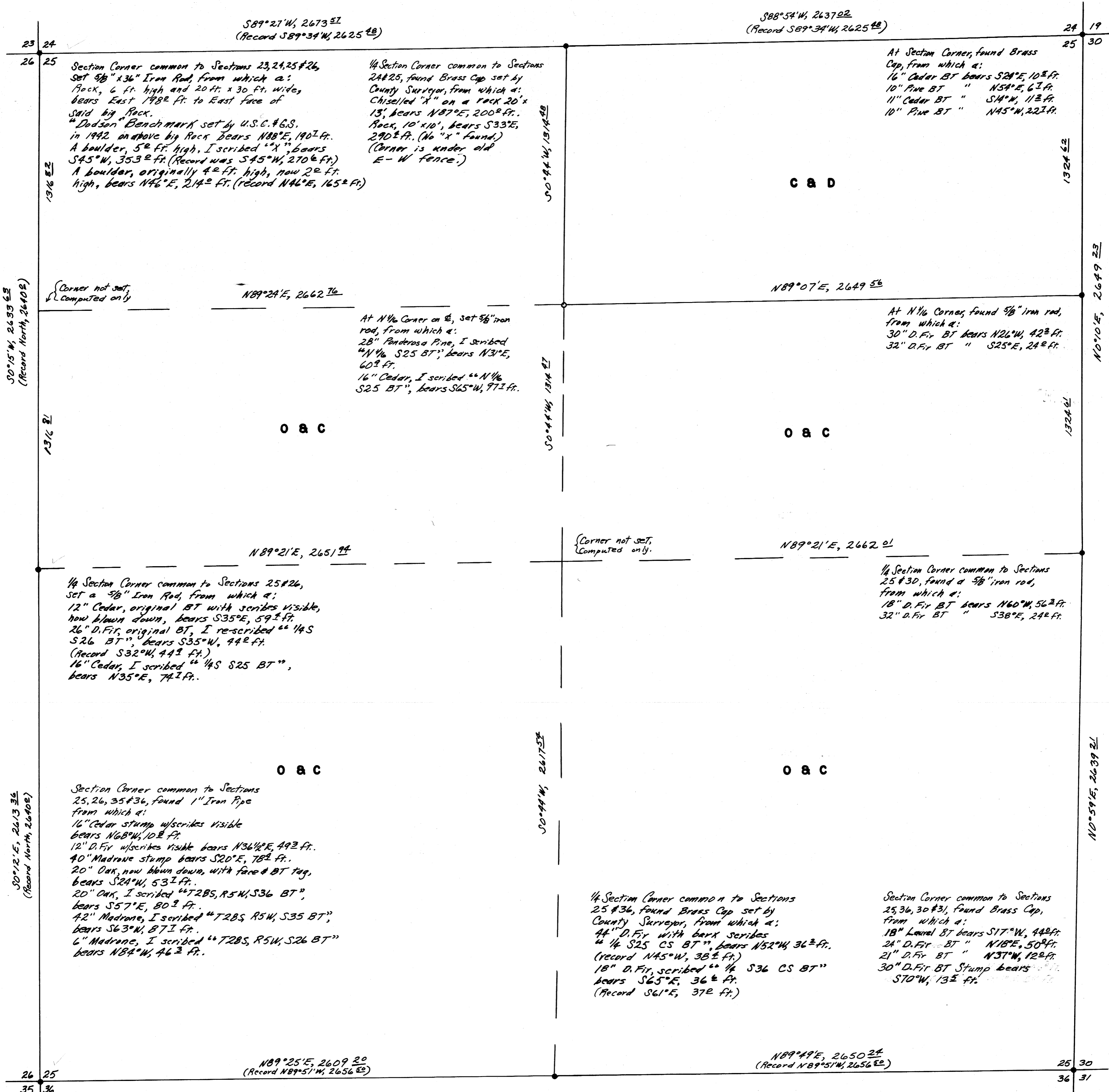
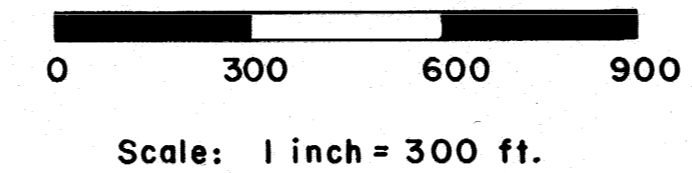
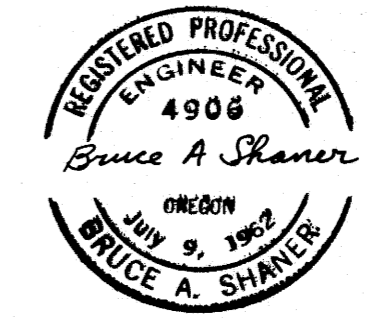


SUBDIVISION OF SECTION 25, T28S, R5W, W.M., DOUGLAS COUNTY, ORE.
FOR
C & D LUMBER CO.



Bearings based on Survey of Sec. 30, T28S, R5W, July, 1964.

LEGEND
 ● Corner Found
 ○ Corner Set



Surveyed August, 1964

FILED *LL*
 RECEIVED
 AUG 19 1964
 COUNTY SURVEYOR
 DOUGLAS COUNTY, ORE.