

SUBDIVISION OF SECTION 30, T28S, R4W, W.M., DOUGLAS COUNTY, ORE.

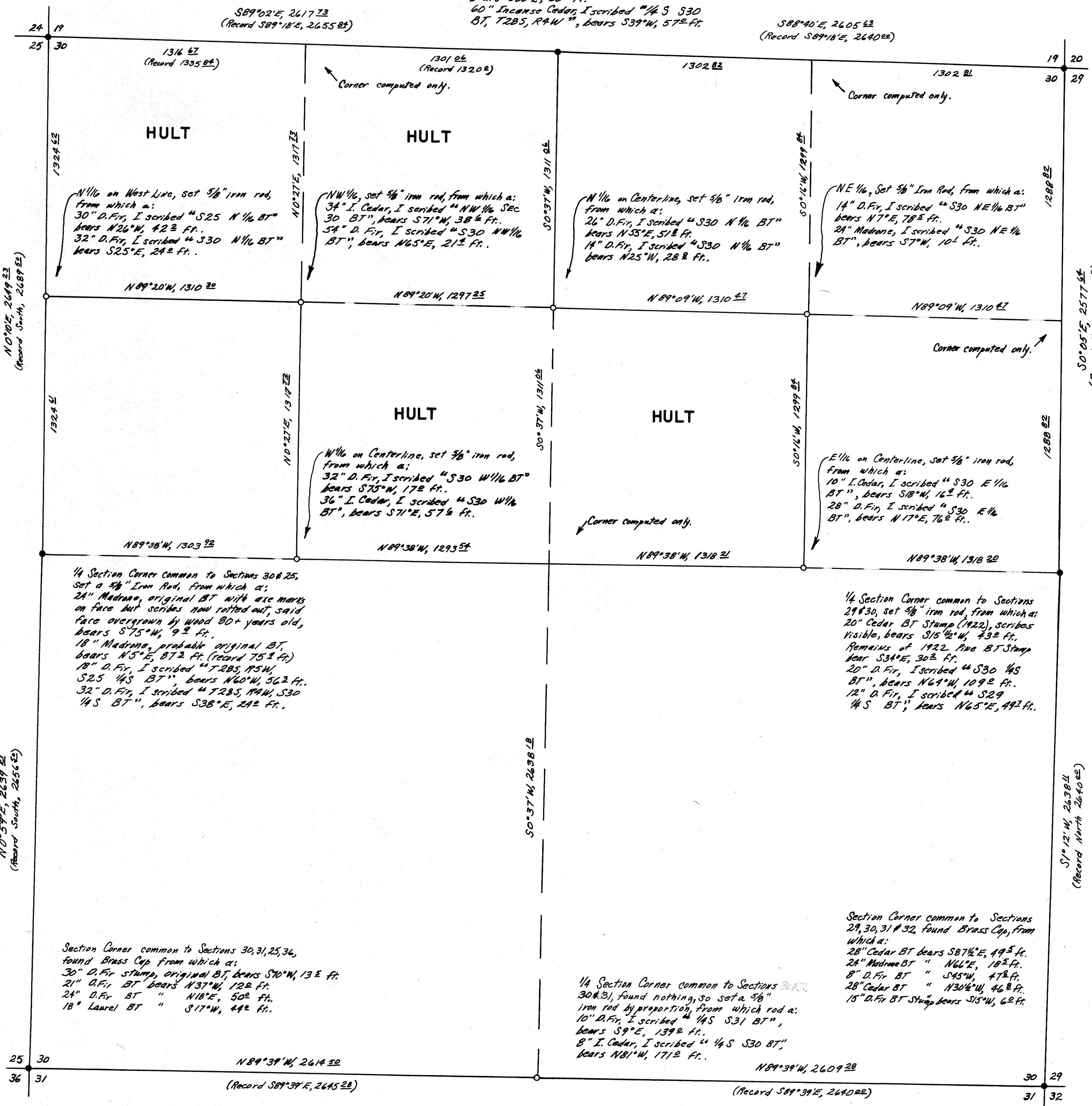
FOR
PAUL B. HULT LUMBER CO.

FILED
RECEIVED
JUL 9 1964
COUNTY SURVEYOR
DOUGLAS COUNTY, ORE.

At Section Corner, found Brass Cap, from which a:
16" Cedar BT bears S24°E, 10 1/2 ft.
10" Ave BT " N54°E, 62 ft.
11" Cedar BT " S44°W, 11 1/2 ft.
10" Ave BT " N45°W, 22 1/2 ft.

1/4 Section Corner common to Sections 19 & 30, set a 5/8" Iron Rod, from which a:
54" D. Fir, an original BT with old "X", (apparently originally bark scribed, scribes now not visible), I rescribed "S19 1/4S BT", bears N35°E, 15 1/2 ft.
40" Incense Cedar BT (original) with scribes visible, tree now blown down, bears S80°E, 68 1/2 ft.
60" Incense Cedar, I scribed "1/4 S S30 BT, T28S, R4W", bears S39°W, 57 1/2 ft.

At Section Corner common to Sections 19, 20, 29 & 30, found Brass Cap & 1/2" Copper Rod, from which a:
18" Cedar BT, recent, bears S43°E, 40 1/2 ft.
8" D. Fir BT, " " N12°E, 26 1/2 ft.
28" Cedar BT, " " N15 1/2°W, 47 1/2 ft.
18" D. Fir BT, " " S83°W, 22 1/2 ft.
8" Pine, probable 1951 BT, bears N10°W, 22 1/2 ft.
26" Cedar, " " " " bears N50°E, 9 1/2 ft.



1/4 Section Corner common to Sections 30 & 25, set a 5/8" Iron Rod, from which a:
24" Madrone, original BT with axe marks on face but scribes now rotted out, said face overgrown by wood 80+ years old, bears S75°W, 9 1/2 ft.
18" Madrone, probable original BT, bears N5°E, 87 1/2 ft. (record 75 1/2 ft.)
18" D. Fir, I scribed "T28S, R5W, S25 1/4S BT", bears N60°W, 56 1/2 ft.
32" D. Fir, I scribed "T28S, R4W, S30 1/4S BT", bears S38°E, 24 1/2 ft.

1/4 Section Corner common to Sections 29 & 30, set 5/8" iron rod, from which a:
20" Cedar BT Stump (1922), scribes visible, bears S15 1/2°W, 43 1/2 ft.
Remains of 1922 Pine BT Stump bear S34°E, 30 1/2 ft.
20" D. Fir, I scribed "S30 1/4S BT", bears N64°W, 109 1/2 ft.
12" D. Fir, I scribed "S29 1/4S BT", bears N65°E, 49 1/2 ft.

Section Corner common to Sections 30, 31, 25, 34, found Brass Cap from which a:
30" D. Fir stump, original BT, bears S70°W, 13 1/2 ft.
21" D. Fir BT, bears N37°W, 12 1/2 ft.
24" D. Fir BT " N18°E, 50 1/2 ft.
18" Laurel BT " S17°W, 44 1/2 ft.

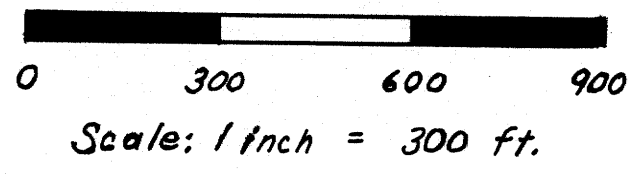
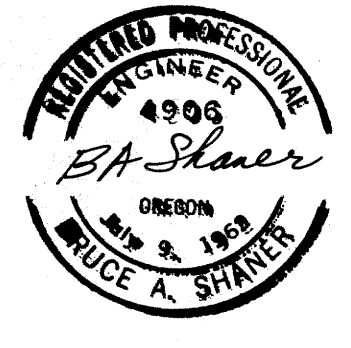
1/4 Section Corner common to Sections 30 & 31, found nothing, so set a 5/8" iron rod by proportion, from which rod a:
10" D. Fir, I scribed "1/4 S S31 BT", bears S9°E, 139 1/2 ft.
8" I. Cedar, I scribed "1/4 S S30 BT", bears N81°W, 171 1/2 ft.

Section Corner common to Sections 29, 30, 31 & 32, found Brass Cap, from which a:
28" Cedar BT bears S87 1/2°E, 49 1/2 ft.
24" Madrone BT " N66°E, 18 1/2 ft.
8" D. Fir BT " S45°W, 47 1/2 ft.
28" Cedar BT " N30 1/2°W, 46 1/2 ft.
15" D. Fir BT Stump bears S15°W, 6 1/2 ft.

LEGEND

- Corner Found
- Corner Set

Note:
Bearings based on South Line Record.
Mag. Decl. is approximately 18 1/2° E.



Surveyed July, '64

COUNTY SURVEYORS FILE DA
DO NOT REMOVE FROM OFFICE

FILED
RECEIVED
JUL 9 1964
COUNTY SURVEYOR
DOUGLAS COUNTY, ORE.