

COUNTY SURVEYORS FILE DATA
DO NOT REMOVE FROM OFFICE

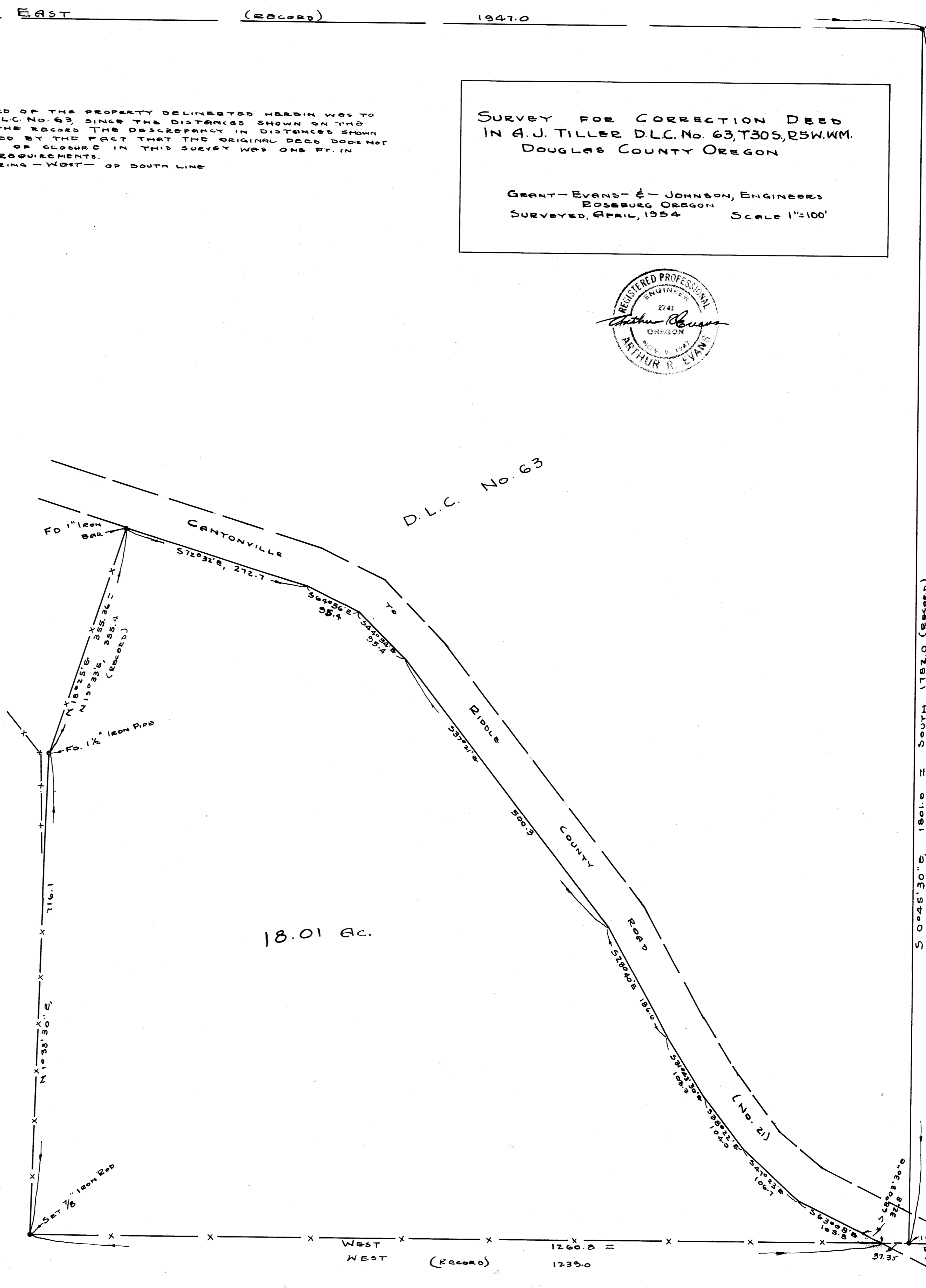
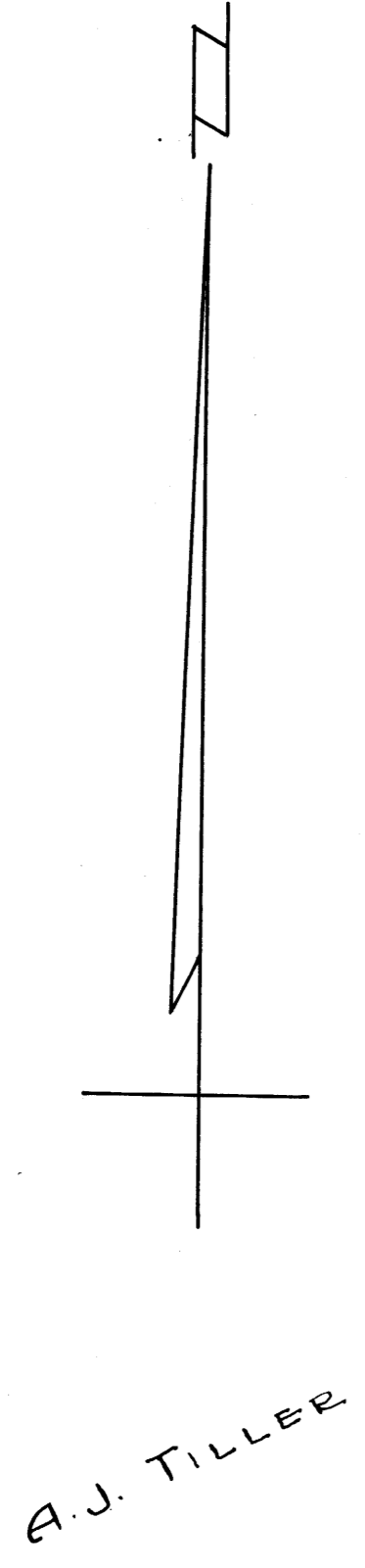
AN EXHAUSTIVE SEARCH WAS MADE FOR THE N.W. COR. OF D.L.C. No. 63, AND ALL TRACES OF ITS LOCATION AND ACCESSORIES ARE LOST. IT IS EXTREMELY DOUBTFUL IF ITS TRUE LOCATION WAS IDENTIFIED IN THE ORIGINAL SURVEY OF THE PROPERTY DELINEATED BELOW, SINCE THE DISTANCES SHOWN ON THE TIE OF THE ORIGINAL SURVEY CHECK EXACTLY WITH THE RECORD, A PATENT IM- POSSIBILITY DUE TO UNCERTAINTY OF CHANGES IN MAG. DECL., ORIGINAL AND PRESENT CHAINING ERRORS, ETC. (NOTE EQUATION ON EAST LINE)

NE COR D.L.C. No. 63
FD AUTO AXLE & 2 B.T.S
36" B.O. N 86W, 32 LKS.
20" W.O. S 20W, 31 LKS.

IT IS OBVIOUS THAT THE ORIGINAL DEED OF THE PROPERTY DELINEATED HEREIN WAS TO BEGIN AT THE INTERIOR "I" COR. OF D.L.C. No. 63 SINCE THE DISTANCES SHOWN ON THE ORIGINAL TIE CHECK EXACTLY WITH THE RECORD THE DISCREPANCY IN DISTANCES SHOWN ON THE SOUTH LINE CAN BE EXPLAINED BY THE FACT THAT THE ORIGINAL DEED DOES NOT CLOSE BY SOME 23.0 FT. THE ERROR OF CLOSURE IN THIS SURVEY WAS ONE FT. IN 9200.0 FT., FAR ABOVE LOCAL CLOSURE REQUIREMENTS.
BEARINGS ARE BASED ON RECORD BEARING - WEST - OF SOUTH LINE
MAG. DECL. S 20°45'E

SURVEY FOR CORRECTION DEED
IN A.J. TILLER D.L.C. No. 63, T30S, R5W, WM.
DOUGLAS COUNTY OREGON

GRANT - EVANS - & JOHNSON, ENGINEERS
ROSEBURG OREGON
SURVEYED, APRIL, 1954 SCALE 1"=100'



COUNTY SURVEYORS FILE DATA
DO NOT REMOVE FROM OFFICE

S 0°45'30"E, 1801.0 (RECORD)

INT. COR. D.L.C. No. 63
FD. BUGGY AXLE &
2 B.T.S
16" W.O. N 35W, 50.2 FT.
18" PINE, N 84 1/2 W, 109.0 FT.