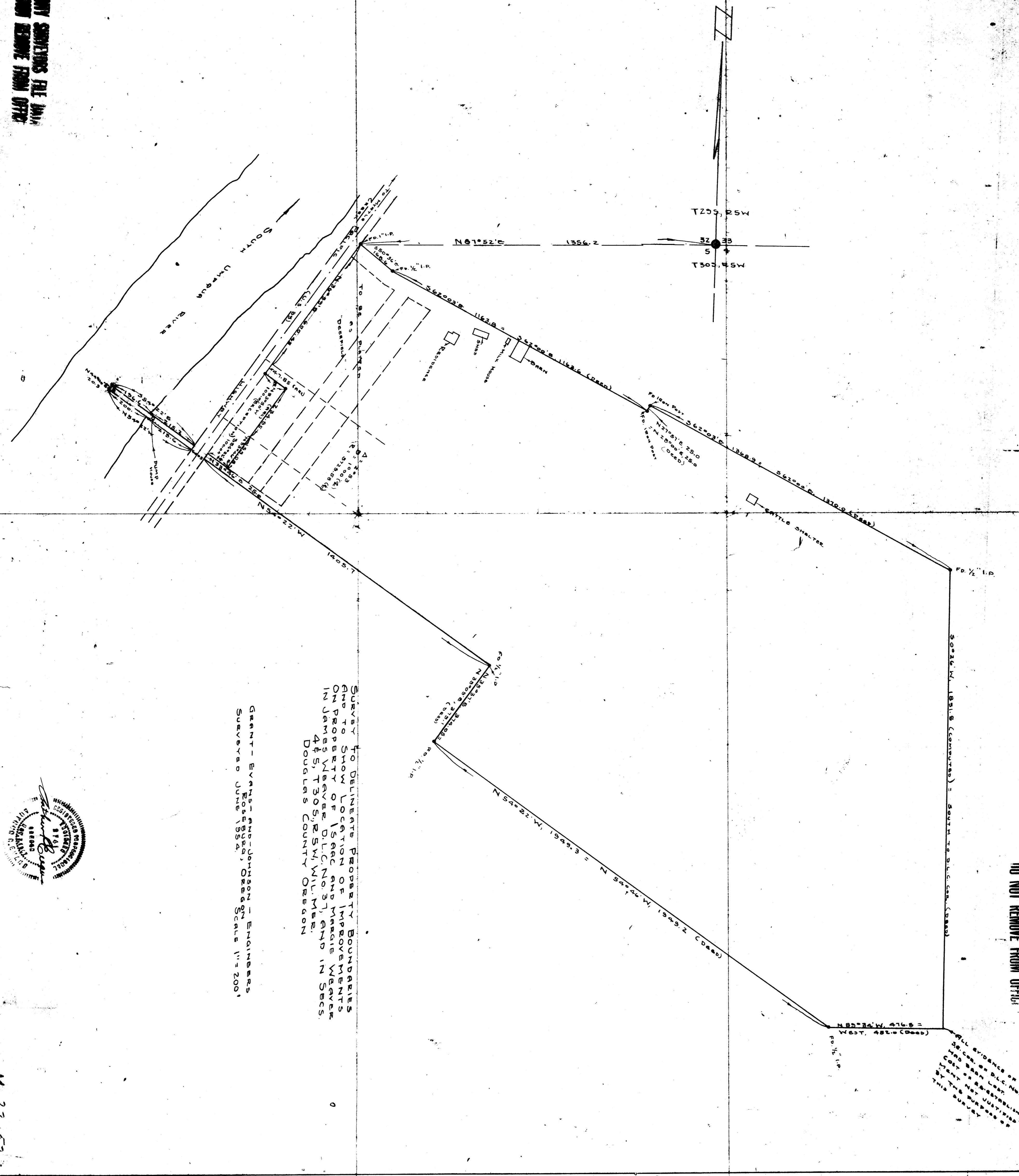


COUNTY SUPERVISORS FILE DATA  
DO NOT REMOVE FROM OFFICE

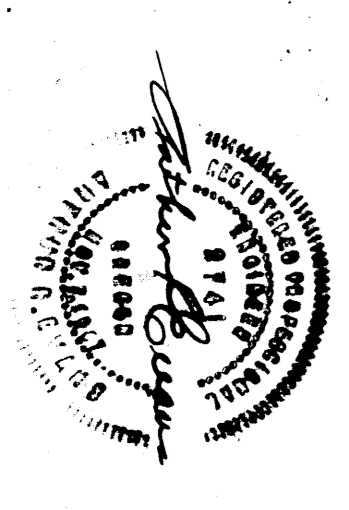
ALL EVIDENCE OF  
DEED OR D.L.C. NO. 31  
HAS BEEN LIST  
FOR THE PURPOSES  
OF THE SURVEY

COUNTY SUPERVISORS FILE DATA  
DO NOT REMOVE FROM OFFICE



SURVEY TO DELINEATE PROPERTY BOUNDARIES  
AND TO SHOW LOCATION OF IMPROVEMENTS  
ON PROPERTY OF ISAAC AND MARGIE WEBBER  
IN JAMES WEBBER D.L.C. NO. 31, AND IN SECS.  
4S, T30S, R5W, WILL. MER.  
DOUGLAS COUNTY OREGON

GRANT - EVERTS AND JOHNSON - ENGINEERS  
SURVEYED JUNE 1954, DEED SCALE 1"=200'



N 22-52  
CSW 4/1982  
MAP FILE N 22-52

(ORIGINAL IN CS FILE)