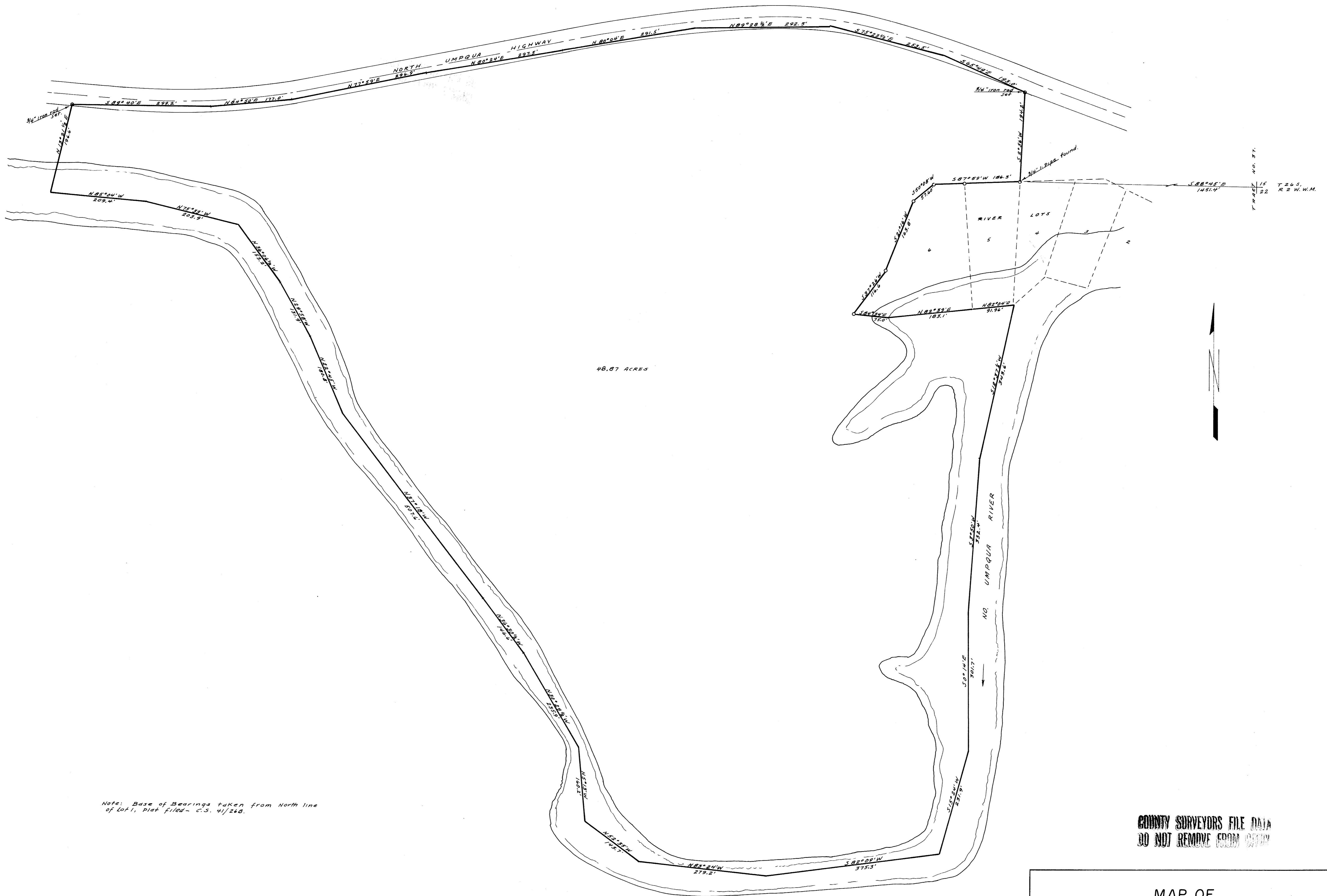


COUNTY SURVEYORS FILE DATA
DO NOT REMOVE FROM OFFICE



48.87 ACRES

Note: Base of Bearings taken from North line of Lot 1, Plat filed - C.S. 4/248.

COUNTY SURVEYORS FILE DATA
DO NOT REMOVE FROM OFFICE

MAP OF
SURVEY FOR DEED DESCRIPTION
IN
TRACT NO. 37, T. 26 S. R. 2 W. W.M.

SURVEYED FOR T. F. REYNOLDS OCT. 1963
SURVEYED BY W. S. BARNES SCALE 1"=100'

FILED
RECEIVED
OCT 25 1963
COUNTY SURVEYOR
DOUGLAS COUNTY, ORE.



Deed Description - T. F. REYNOLDS

in

Tract No. 37, T. 26 S., R. 2 W. V. M.

BEGINNING at a point marked with a 3/4" iron pipe from which the N. W. corner of Section 22, T. 26 S., R. 2 W. V. M. bears S. 88° 45' E., 1451.4 feet, said beginning point being the N. E. corner of Lot 5 of an unrecorded plat of river lots in Tract No. 37, T. 26 S., R. 2 W., thence S. 87° 59' W., 186.3 feet, thence S. 50° 08' W., 57.6 feet, thence S. 21° 16' W., 163.8 feet, thence S. 37° 26' W., 116.6 feet to the S. W. corner of Lot 6 of said unrecorded plat, thence S. 84° 34' E., 75.0 feet, thence N. 82° 39' E., 183.1 feet, thence N. 82° 04' E., 91.96 feet to the centerline of the North Umpqua River, thence downstream along the centerline of said North Umpqua River on the following courses: S. 12° 37½' W., 343.6 feet, thence S. 3° 50' W., 332.4 feet, thence S. 0° 14' E., 301.7 feet, thence S. 15° 24' W., 231.9 feet, thence S. 82° 09' W., 375.3 feet, thence N. 83° 24' W., 279.2 feet, thence N. 52° 35' W., 143.7 feet, thence N. 5° 13' W., 160.2 feet, thence N. 30° 29½' W., 235.9 feet, thence N. 36° 30½' W., 146.6 feet, thence N. 37° 18' W., 507.6 feet, thence N. 22° 45' W., 180.8 feet, thence N. 29° 58' W., 131.9 feet, thence N. 36° 06½' W., 153.2 feet, thence N. 75° 33' W., 203.95 feet, thence N. 85° 04' W., 209.4 feet, thence leaving the centerline of said North Umpqua River and running N. 13° 21½' E., 196.6 feet to point on the southerly side of the North Umpqua Highway said point marked with a 3/4" iron rod, thence S. 89° 40' E., 299.2 feet, thence N. 84° 50' E., 177.0 feet, thence N. 77° 59' E., 296.9 feet, thence N. 80° 24' E., 297.2 feet, thence N. 80° 04' E., 291.5 feet, thence N. 89° 28½' E., 292.5 feet, thence S. 75° 23½' E., 253.5 feet, thence S. 65° 49' E., 193.0 feet to a 3/4" iron rod on the southerly side of said North Umpqua Highway, thence S. 2° 56' W., 194.2 feet to the point of beginning, containing 48.87 acres more or less, excepting therefrom any portion which lies within the boundaries of the North Umpqua Highway right of way.

C.S. File 51 / 269

Map File M22 T 49