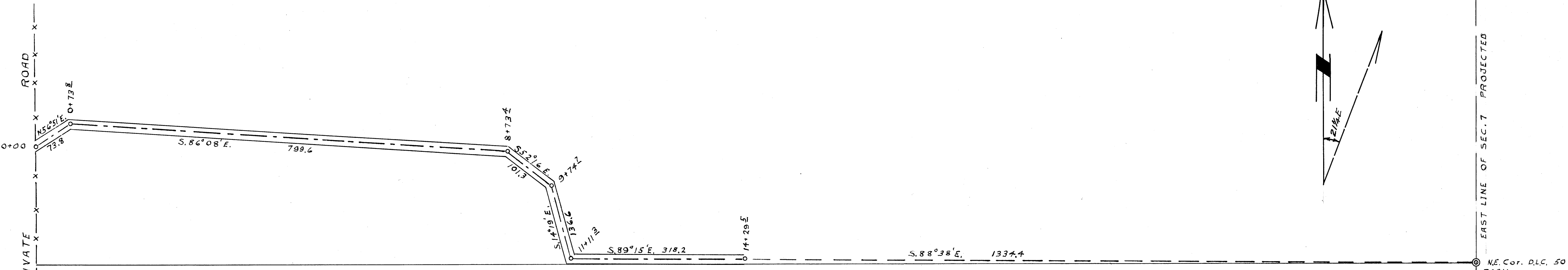


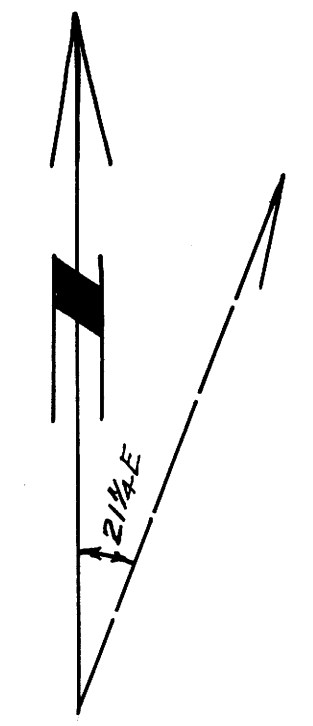
COUNTY SURVEYORS FILE DATA
DO NOT REMOVE FROM OFFICE



COUNTY SURVEYOR'S OFFICE
 DOUGLAS COUNTY OREGON
 EDWARD DAHL PRIVATE ROAD
 LOT 2 SEC 7 T295, RBW WM.

BEN. B. IRVING COUNTY SURVEYOR
 Surveyed by N. E. RICHARDSON
 JAN. 10 1946 Deputy Co. Surveyor
 SCALE 1" = 100'

REGISTERED
 OREGON
 LAND SURVEYOR
 N. E. Richardson
 N. E. RICHARDSON
 35



COUNTY SURVEYORS FILE DATA
 DO NOT REMOVE FROM OFFICE

EAST LINE OF SEC. 7 PROJECTED

NE. Cor. D.L.C. 50
 ROCK